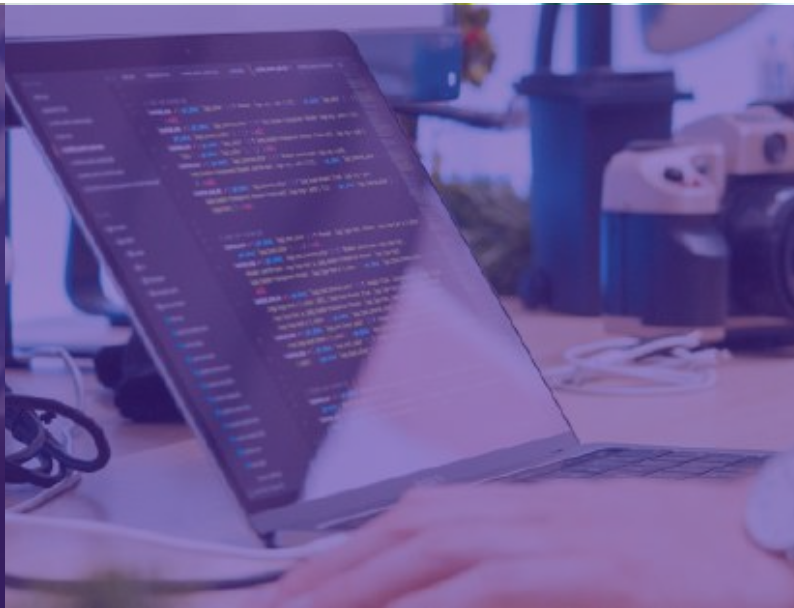
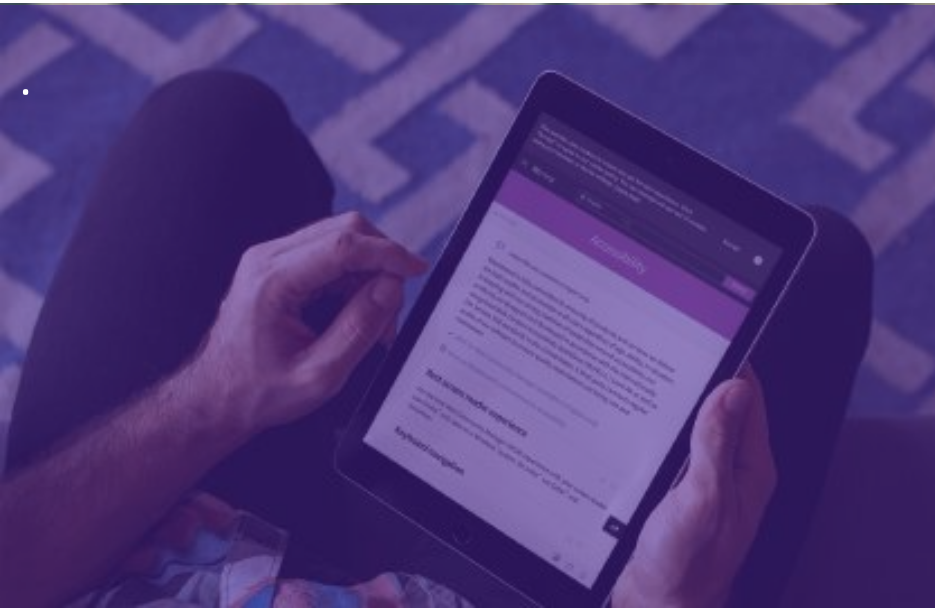




# Where We Are With Assessment @ IVCC



# ILO Assessment Meets



# Reminder: **ASSESSMENT** is important because it allows us to

- improve our teaching—and thus student learning—within our own classes;
- make certain that students attain skills and knowledge required by their programs;
- chart students' learning as they traverse our institution;
- identify areas where we can improve curriculum, refine our programs, work toward greater attainments, or increase equity in and across our programs;
- demonstrate that students learn the skills and knowledge that we have deemed most important and essential across IVCC; and, finally,
- report those successes and improvements to our administration, our accreditors, and our community.



# CONSENSUS: ASSESSING IN BRIGHTSPACE IS BETTER

and has benefits for faculty and everyone else

This screenshot shows the submission interface for a 'Cinematic Analysis Paper' in Brightspace. The page title is 'Cinematic Analysis Paper' with the course 'The Art of The Film (FLM-2009-100)'. A dropdown menu shows 'Student Three' as the selected user. Under 'Submission 1', a PDF file is listed with a size of 8.1 MB. On the right, the 'Outcomes' section contains three proficiency questions, each with 'Not Yet Proficient' and 'Proficient' buttons. At the bottom right, there are 'Update' and 'Retract' buttons.

This screenshot shows the 'Mastery View' for 'View Achievements By'. A blue arrow points to the 'Mastery View' tab. Below the tabs, there is a search bar and a 'Publish All' button. A table displays student performance across three outcomes.

Last name ▲, First name	2.1 Is the student proficient in gathering and selecting information?	2.2 Is the student proficient in analyzing or investigating data?	2.3 Is the student proficient in articulating reasons for decisions or solutions?
Student 1	1/1 Proficient	1/1 Proficient	1/1 Proficient
Student 2	1/1 Proficient	1/1 Proficient	1/1 Proficient
Student 3	0/1 -	0/1 -	0/1 -
Student 4	1/1 Proficient	1/1 Proficient	1/1 Proficient
Student 5	0/1 -	0/1 -	0/1 -
Student 6	1/1 Not Yet Pro...	1/1 Proficient	1/1 Proficient





Closing Out Assessment in Blackboard:

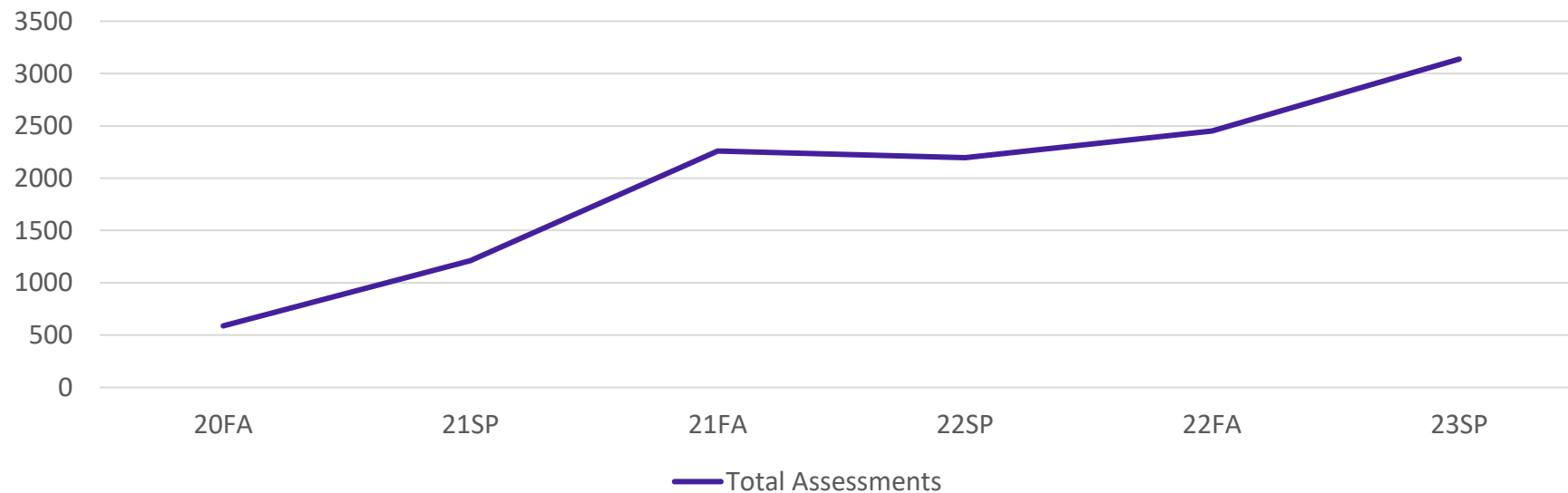
Assessment Stats from Fall 2020  
to Spring 2023 Academic Year

## Number of Assessments by ILO

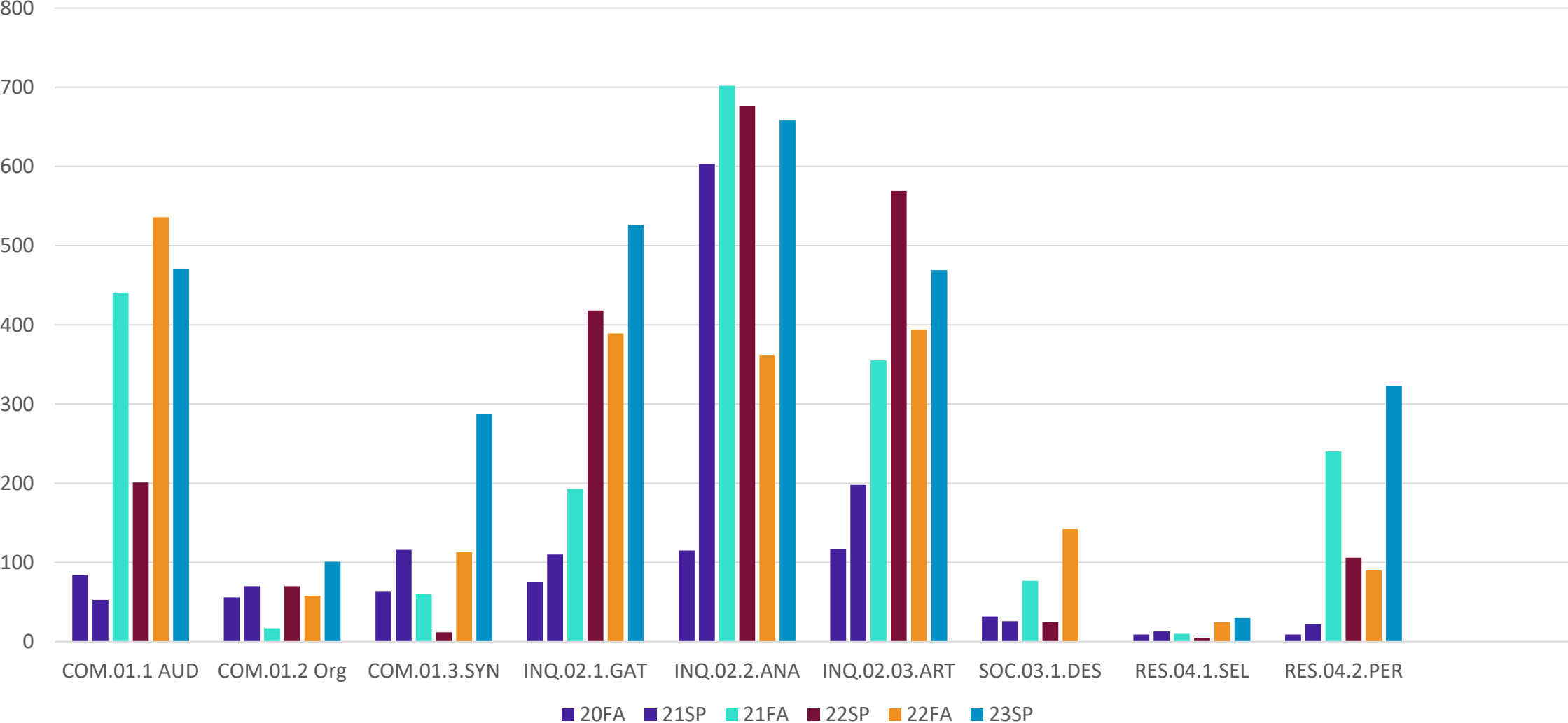
SEMESTER	COM.01.1. AUD	COM.01.2. ORG	COM.01.3. SYN	INQ.02.1.G AT	INQ.02.2.A NA	INQ.02.3.A RT	SOC.03.1.D ES	SOC.03.02. APP	RES.04.1.S EL	RES.04.2.P ER	Total
20FA	84	56	63	75	115	117	32	29	9	9	589
21SP	53	70	116	110	603	198	26	0	13	22	1211
21FA	441	17	60	193	762	355	77	104	10	240	2259
22SP	201	70	12	418	676	569	25	113	5	106	2195
22FA	536	58	113	389	362	394	142	341	25	90	2450
23SP	471	101	287	526	658	469	0	254	50	323	3139

25% increase in assessments from academic year 2021-2022 to 2022-2023.

### Total Assessments



Number of Assessments by ILO from 20FA-23SP



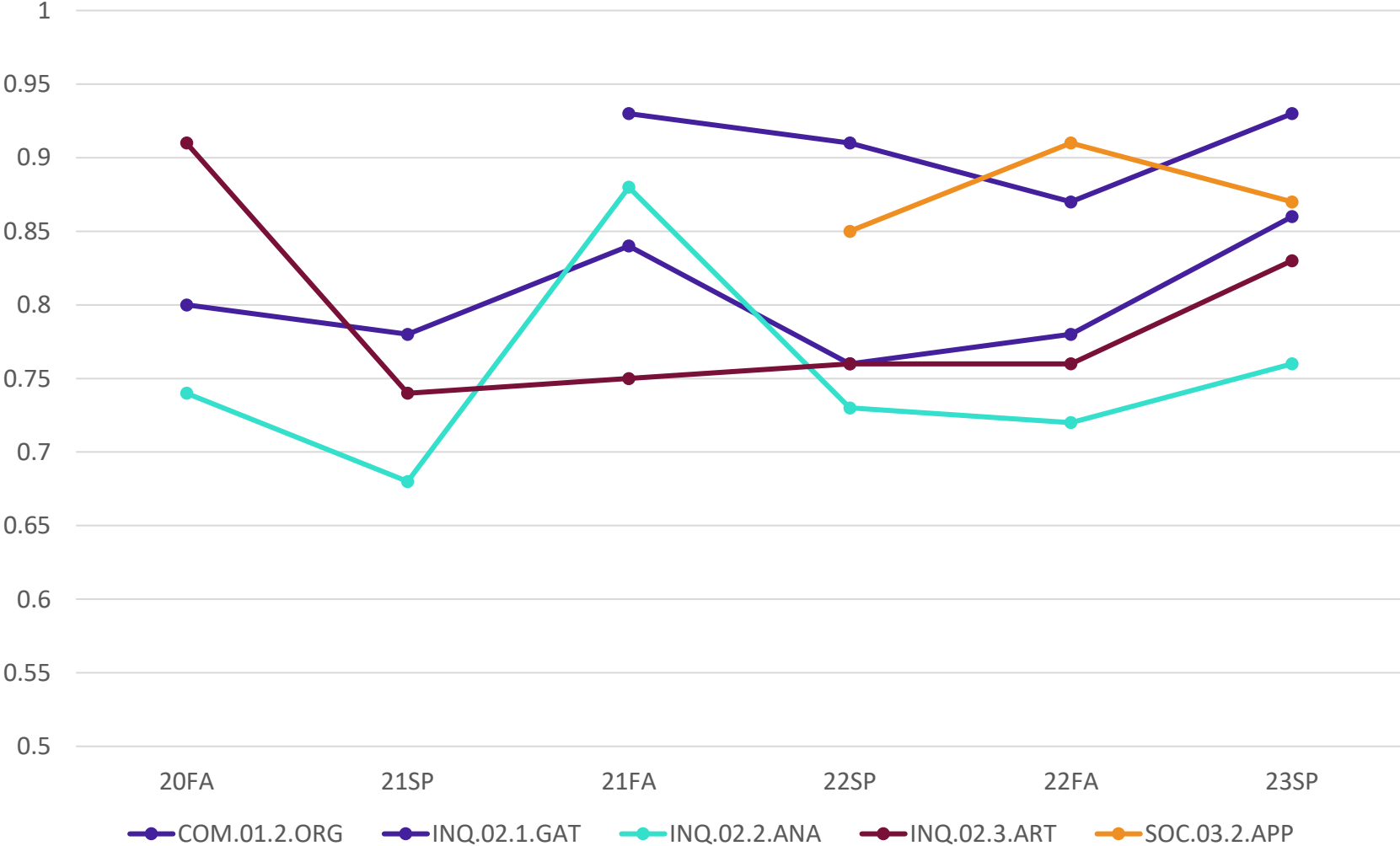
## Student Success Rates of ILOS by Semester\*

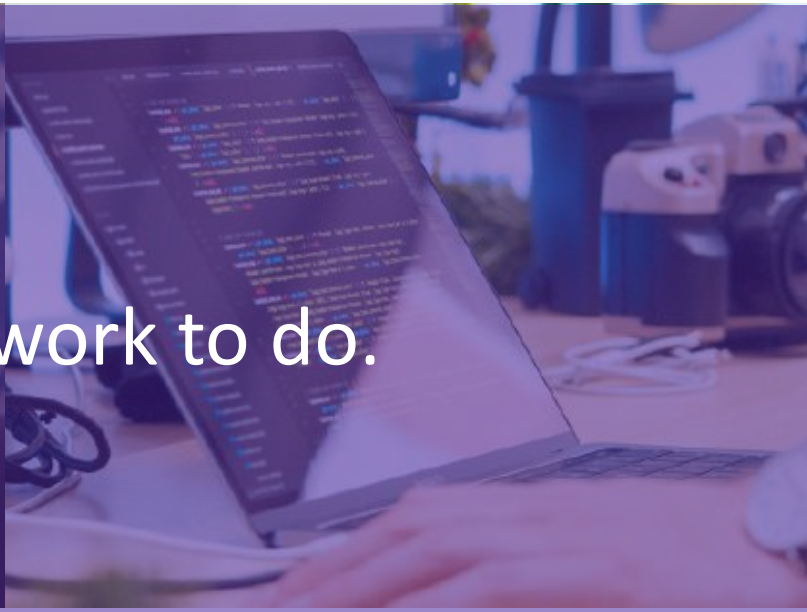
SEMESTER	COM.01.2.ORG	COM.01.2.ORG	COM.01.3.SYN	INQ.02.1.GAT	INQ.02.2.ANA	INQ.02.3.ART	SOC.03.1.DES	SOC.03.02.APP	RES.04.1.SEL	RES.04.2.PER
20FA	N/A	N/A	73%	80%	74%	91%	N/A	N/A	N/A	N/A
21SP	N/A	N/A	73%	78%	68%	74%	N/A	N/A	N/A	N/A
21FA	93%	N/A	N/A	84%	88%	75%	N/A	N/A	N/A	94%
22SP	91%	N/A	N/A	76%	73%	76%	N/A	85%	N/A	N/A
22FA	87%	N/A	83%	78%	72%	76%	93%	91%	N/A	N/A
23SP	93%	N/A	87%	86%	76%	83%	N/A	87%	N/A	83%

\*All proportions have a margin of error less than 5% and are based on a 95% confidence interval.



Student Success Rates of ILOs from 20FA to 23SP





There is still much more work to do.

**Thank You!**