

April 28, 2023

PERSPECTIVE



CHANGES EVERYTHING.

Scott Bross, CIO, Heartland Community College

Sean Grennan, Consulting Manager, CIO Advisory Practice, Wipfli LLP

WIPFLI

April 28, 2023

Heartland Community College

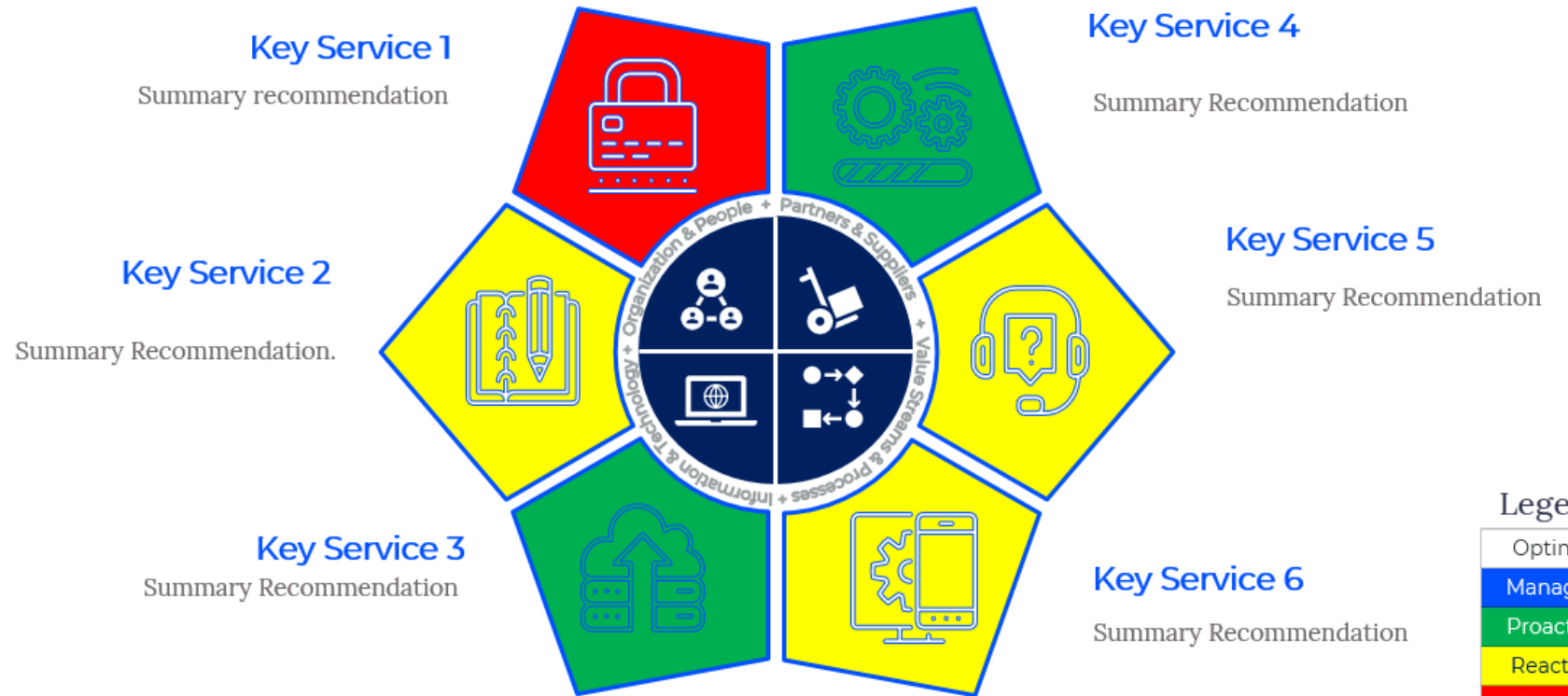
IT Master Plan

WIPFLI

Final Report

The assessment considers key services that exist in the Client's current environment and evaluates how technology is used to support and advance the business processes within the various service areas.

High level summary of the current trajectory of the Digital Transformation for Client



Maturity Assessment

Maturity Assessment

Recommendations and Roadmap

Recommendations and a roadmap for the implementation of improvements to Key Services are provided in the final report.



Area			
Key Service X	<ul style="list-style-type: none">Recommendation 1	<ul style="list-style-type: none">Recommendation 2Recommendation 3	<ul style="list-style-type: none">Recommendation 4Recommendation 5
Key Service Y	<ul style="list-style-type: none">Recommendation 6Recommendation 7	<ul style="list-style-type: none">Recommendation 8Recommendation 9Recommendation 10	<ul style="list-style-type: none">Recommendation 11Recommendation 12



IT Master Plan

Guiding Principles and Strategic Alignment

Active Projects Portfolio

Specific	Measure	Status	Assigned	Realistic Time Bound	Q1 Project
Expand wireless to main quad and other outdoor areas on campus	Plan and implement wireless expansion	On Track	Chen, J	06/30/2025	Close or Complete
Plan replacement - wide building	Complete physical replacement of fiber and services to SAS	On Track	Chen, J	06/30/2024	Close or Complete
Planning - research and create a 2024	Blue print - research and build model	On Track			Close or Complete



Instructional Technologies



Student Information Systems



Student Success and Support Systems




Business Intelligence



Pillars / Aspects

- Instructional Technologies
- Student Information Systems
- Student Success and Support Systems
- Business Intelligence
- Physical Campus Technologies
- Employee as Digital Citizen
- Student as Digital Citizen
- Continuing Education
- Marketing and Communications
- Electronic Security
- Technical Infrastructure



Instructional Technologies

Description

Instructional Technologies are the technology platforms and tools used in the delivery of education. Instructional Technologies include all supports used in the act or process of teaching. This also includes technology supports for faculty used in the lifecycle of a class over a term.

Target Audiences

- Faculty – leading and delivering programs/classes for students.
- Students – consumers/customers who are receiving instruction.

Key Themes

- Accessibility
- On-line/hybrid delivery


Principal Components/IT Systems


- Canvas - Learning Management System (LMS)
- Zoom - Collaboration platform supporting online classes
- Yuja - Higher-Ed Video Platform
- Library Student Computer Labs

 Now, Next, Later Phases

 Canvas - (LMS) Learning Management System

 Current Canvas Integrations

 Math Courses

 Innovative Technology Grants

Pillar Landing Page

- Description
- Target Audiences
- Key Themes
- Principal Components/Systems
- Campus Initiatives/Strategies

Now Next Later

Principal Components

Departmental / Program
Systems Summary

Campus Initiatives

Instructional Technologies - Now, Next, Later

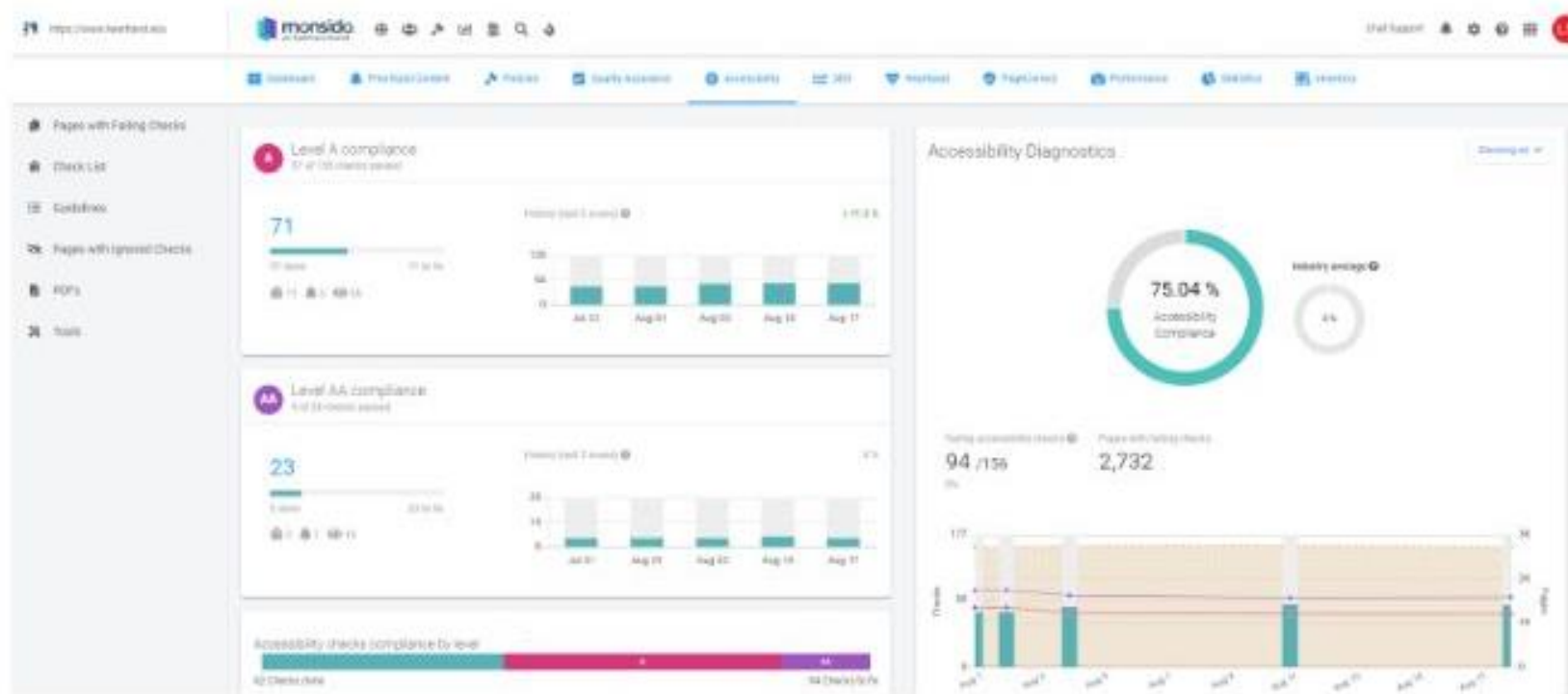
Component	Description	Now	Next	Later
Canvas	Learning Management System	<ul style="list-style-type: none"> Adding high school students that haven't gone through HCC admissions application process for dual credit courses - This is developing a solution for a processing gap. Not in IT Plans - Promote the Canvas 100 course to incoming student body 	<ul style="list-style-type: none"> Simple Syllabus - This effort provides faculty with more prefilled data and provides the ability to download Simple Syllabus for the requirements of a program. LTI Publisher Updates to 1.3 - Latest version of the LTI standard that focuses on improving security for integrations and student data. 	<ul style="list-style-type: none"> Investigate Faculty/classroom feedback capabilities as a potential replacement for Class Climate Scantron.
Yuja	Enterprise Video Platform			
Zoom	Video Conferencing (Cloud)			
Library Computer Labs		<ul style="list-style-type: none"> Enhance wireless capabilities Implement wireless printing accessibility 		

- Training materials and handout production for web applications

Accessibility

Now (current state):

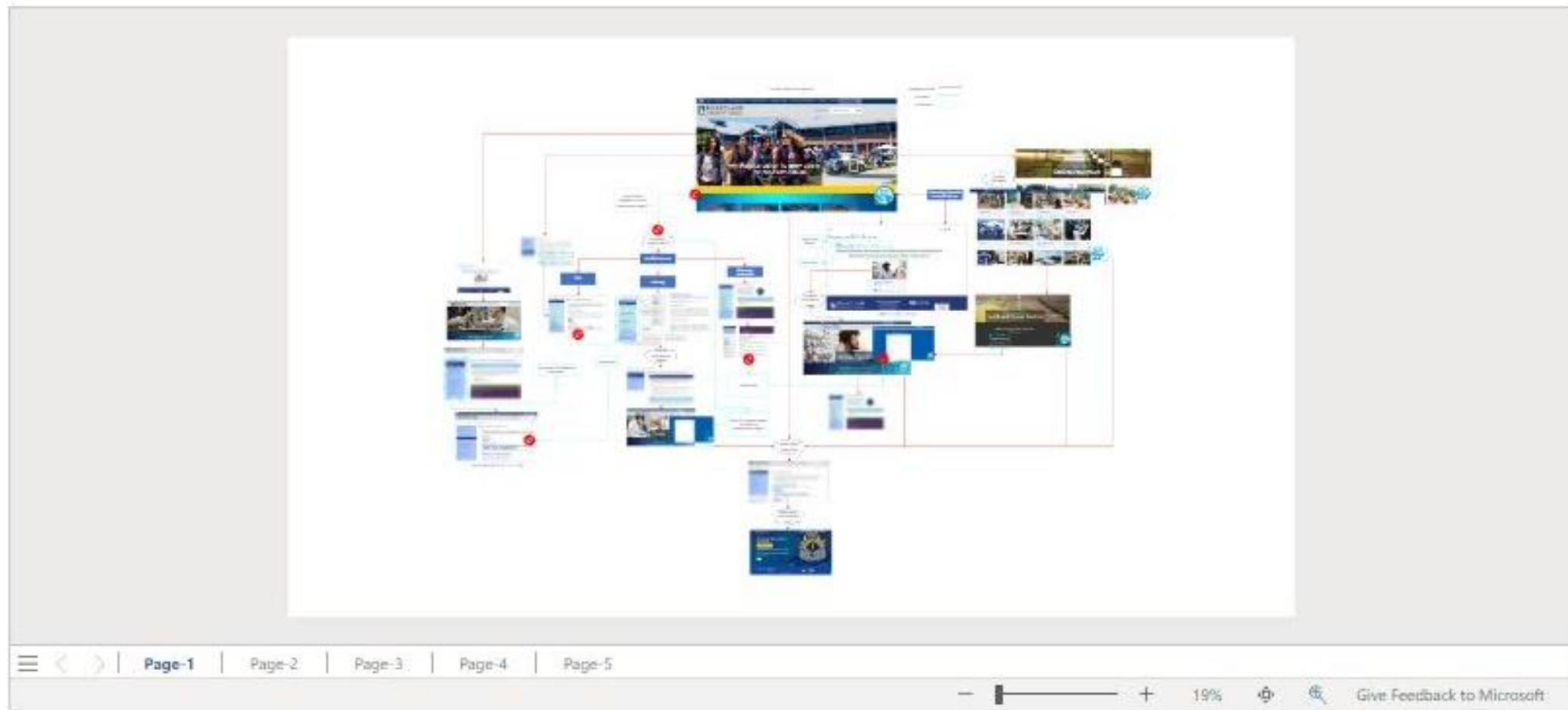
Using [Monsido](#) to scan our site for issues. Currently working through known errors with editors and updating their accessibility knowledge.



Next (targeted goals):

Remove errors too complicated for regular editors, such as table errors. Periodically review error type: *Review* level issues and reduce notices to zero.

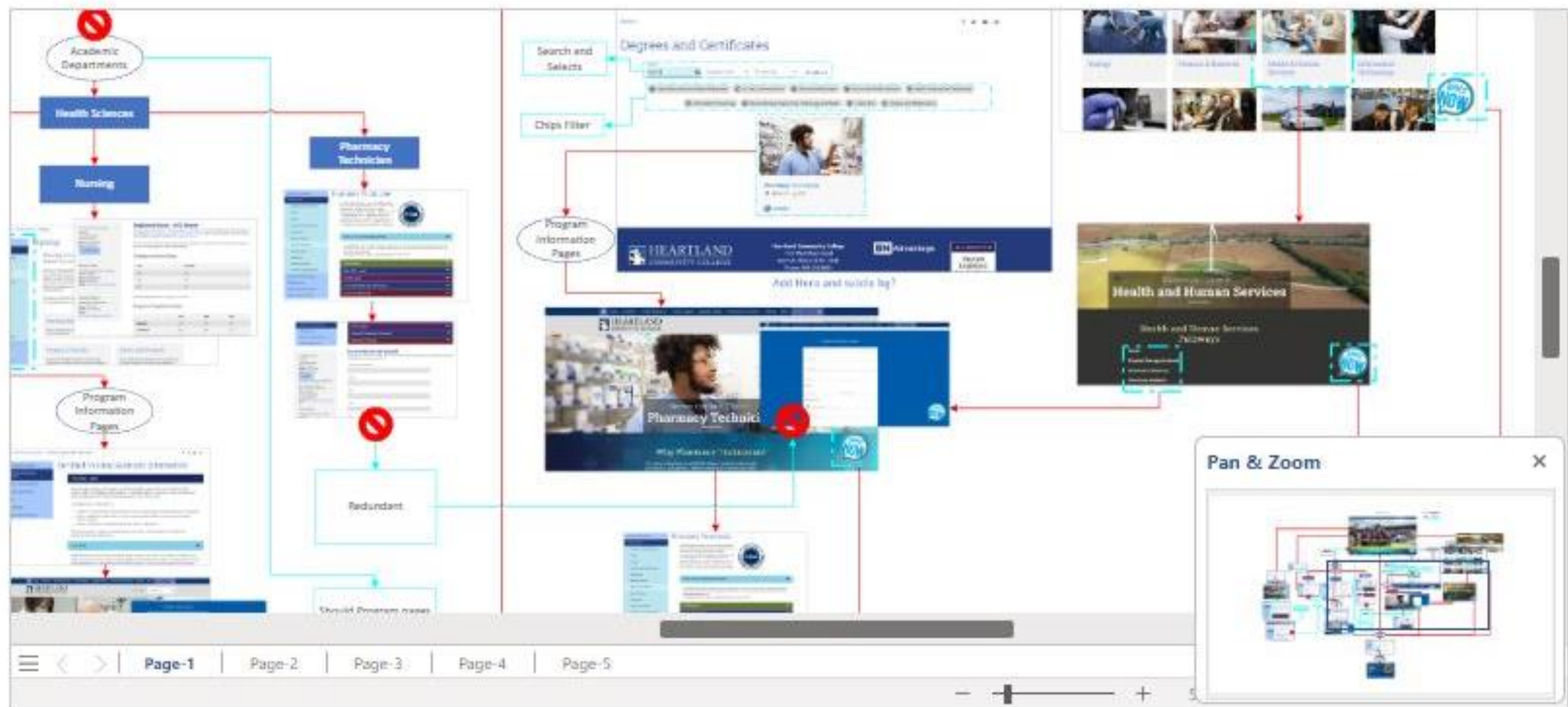
Web pages that work together seamlessly and have an up-to-date cohesive look.



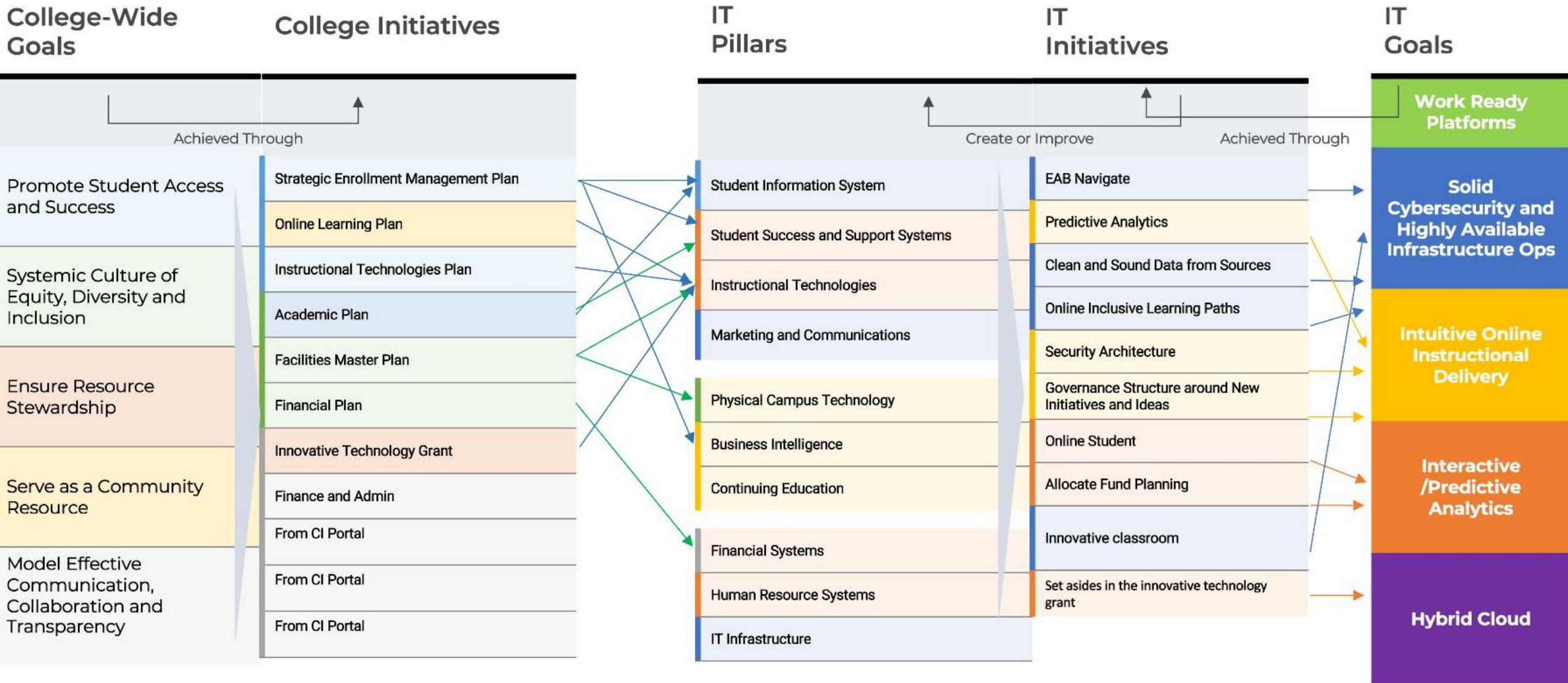
Student Portal

[Design Thinking Document \(PDF\)](#)

Now:



IT Master Plan Strategic Alignment



Questions?

wipfli.com

© 2023 Wipfli LLP. All Rights reserved. "Wipfli" refers to Wipfli LLP.