

2016 Spring ICCCFD Conference

Presented by:

Carol Stolt, FGM Architects Inc.

David Yandel, FGM Architects Inc.

Furniture, Design Excellence & the State Procurement Code

learning objectives

- **TRENDS:** Current trends in furnishings for classrooms, student commons, and office – collaboration is key
- **VALUE:** Appreciate the value a design firm can bring in the selection and specification of furnishings, fixtures and equipment (FFE)
- **FFE:** Understand the requirements of the State Procurement Code with respect to FFE and how you can achieve the best solution
- **ROI:** Learn from case studies of successful furniture installations completed in a competitive bidding environment

trends

Current trends in furnishings for classrooms, student commons, and office – collaboration is key

classroom trends



classroom trends

THE SPACE:

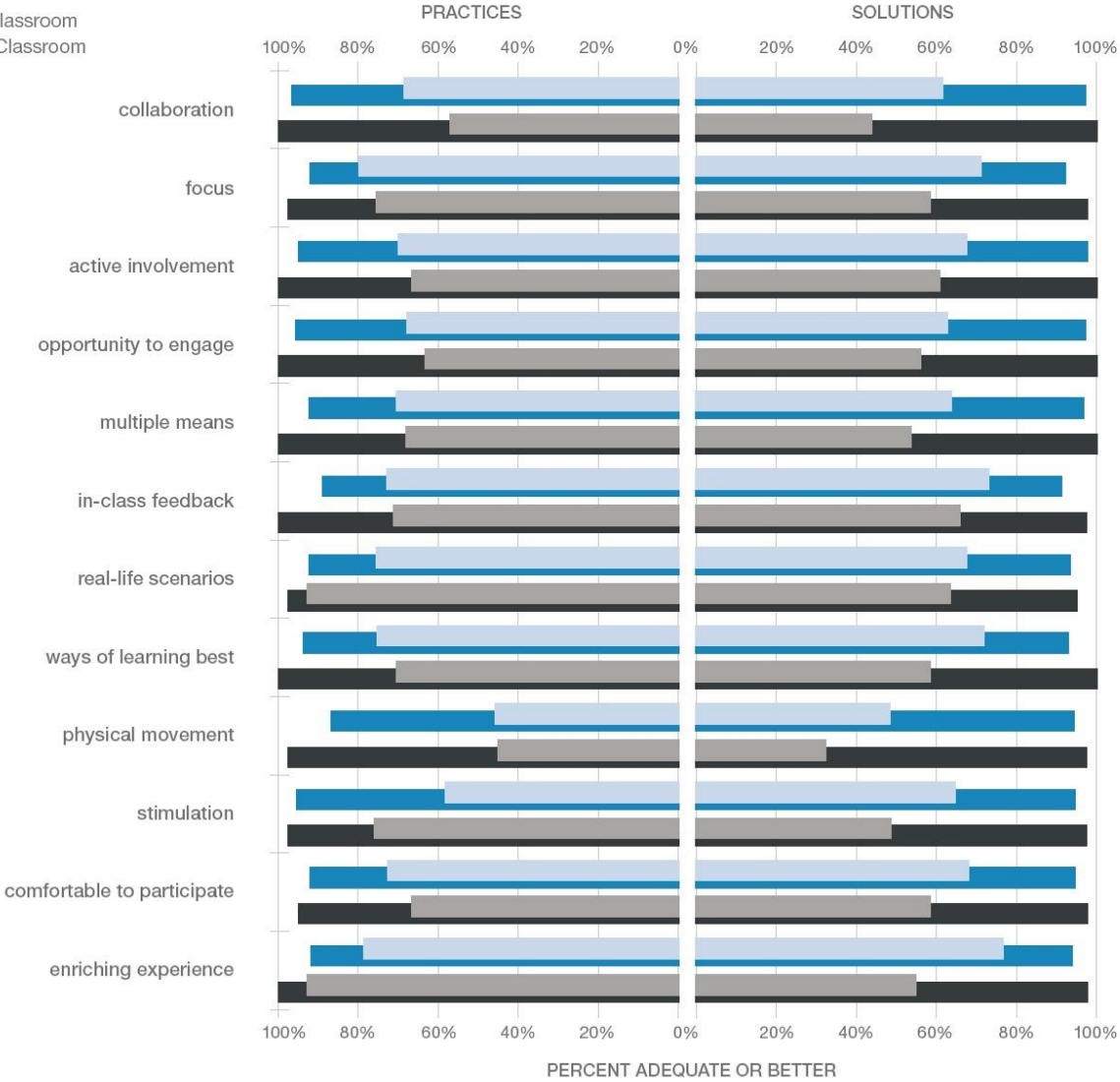
- Pedagogy
- Technology
- Remote Learning
- Distance Learning
- Active Learning
- Flip Learning

THE STUDENTS:

- Collaboration
- Varied Learning Styles
- Varying Ages of Students
- Merging of Cultures

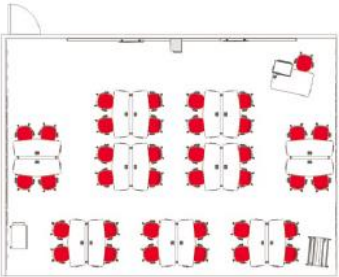
HOW CLASSROOM DESIGN AFFECTS STUDENT ENGAGEMENT

- Student Old Classroom
- Student New Classroom
- Faculty Old Classroom
- Faculty New Classroom

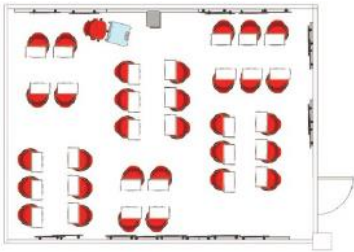


“Classrooms intentionally designed to support active learning increased student engagement on multiple measures as compared to traditional (i.e., row- by-column seating) classrooms.”

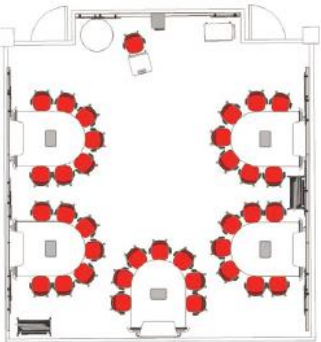
Steelcase



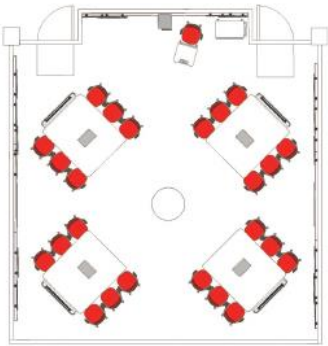
Verb classroom



Node classroom



media:scape classroom



LearnLab (or media:scape LearnLab)



“Investment in solutions intentionally designed to support your programs will create more effective classrooms and higher student engagement.”



commons

social hive



oasis



“Up to 90% of learning happens outside of the classroom.”

Lee Van Orsdel



potential learning spaces are:

- reflective, contemplative places
- group spaces for active creation
- flexible, changeable environments
- ranges of space types support varied social settings



“Tell me and I forget. Teach me and I remember. Involve me and I learn.” Benjamin Franklin



administrative areas

flexible work



focused heads down work



this...



...is becoming...



...this

- Transparency encourages faculty-student interaction.
- Offices serve dual purpose as meeting space.
- Collaboration happens.



- Furniture is lighter in scale.
- Work walls provide maximum efficiency.
- Combinations of finishes meets many budget levels.



value

Appreciate the value a design firm can bring in the selection and specification of furnishings, fixtures and equipment (FFE)

Look at the broader market

- What is the best solution for your project?
- What is the best value for your project?
- What is the best fit for the overall design of your project?



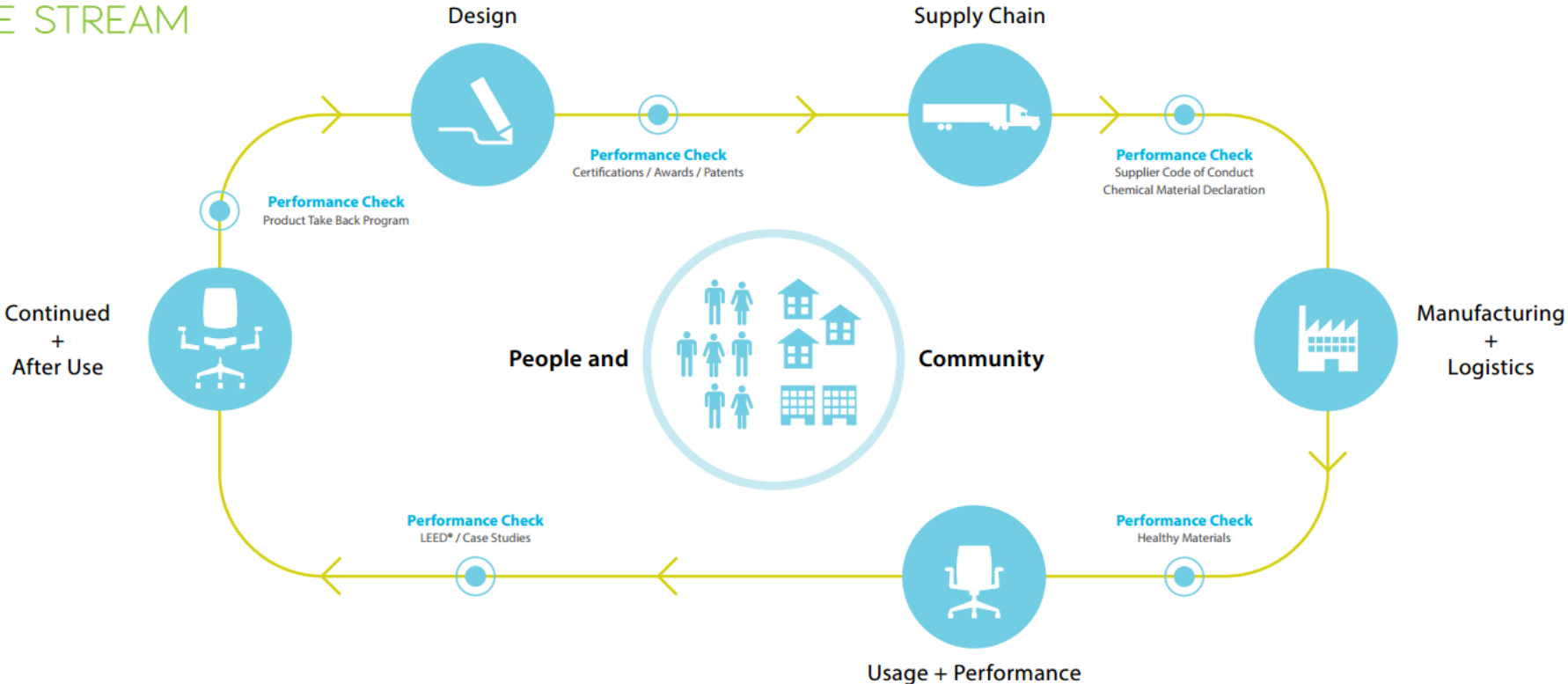
life safety

- ADA standards
- NFPA Flame Spread
- ANSI/BIFMA Safety and Performance Standards



sustainability

VALUE STREAM



Haworth

maintainability

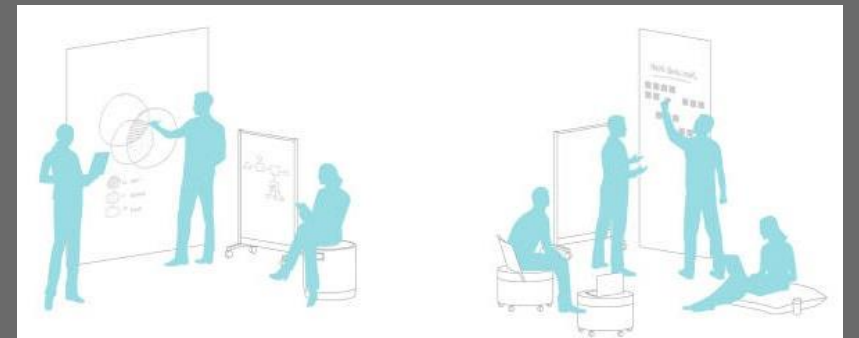
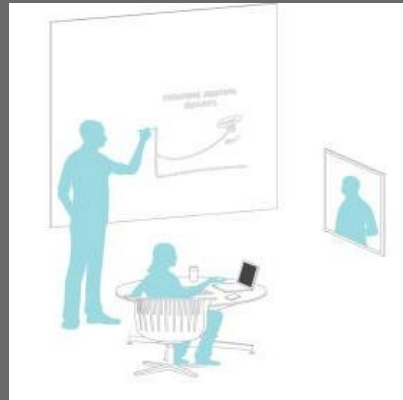
- How is it built?
- What are the connections?
- Can it be refurbished on-site?
- Is it a running line?



health and wellness

- Encourage personal and professional connections
- Promote movement and offer posture choices
- Create environments that support focus
- Encourage social interaction
- Provide space that can be modified by individuals
- Allow individuals to express their personalities

“Western culture typically views the mind, the body and the environment separately, but science is showing that they are intricately linked, as Eastern cultures have long known.”



furnishings, fixtures & equipment

Understand the requirements of the State Procurement Code with respect to FFE and how you can achieve the best solution

challenges

- Finding Competition
- Maintaining Design and Functional Intent
- 30 ILCS / 500 – Illinois Procurement Code (Article 25)
- Illinois Compiled Statutes, Chapter 110, Section 805/3-27.1
- Co-ops



buy off contract

- Pros:
 - Guaranteed Pre-Negotiated Discount
 - Streamlined purchasing process
 - Manufacturers Sell Direct
- Cons:
 - Limited Number of Vendors
 - Limited Selection / Design Options
 - Board may require multiple bids for amounts over \$10,000



design / bid

Pros:

- Unlimited design options
- Specify exactly what the project calls for
- Best pricing option
- Best value option

• Cons:

- Additional time for design and bid phases
- May have multiple dealers involved in the same project



bidding requirements

state codes

- State Procurement Code Does not specifically apply to Community Colleges
- Competitive Bids required for Contracts > \$25K* per 110 ILCS 805/3-27.1
- Can purchase through other State contracts (co-ops)

ffe

- No specific requirements
- Competitive bidding through selection of different manufacturers / products
- Competitive bidding through different vendors for same product (open lines)

return on investment

learn from case studies of successful furniture installations completed in a competitive bidding environment

University of Illinois at Urbana-Champaign
Ikenberry Commons
Bousfield Residence Hall



University of Illinois at Urbana-Champaign
Ikenberry Commons
Bousfield Residence Hall



University of Illinois at Chicago Learning Sciences Research Institute



University of Illinois at Chicago Learning Sciences Research Institute



Triton College Building H Renovation – Health Careers



Triton College Building H Renovation – Health Careers



2016 Spring ICCCF0 Conference

Presented by:

Carol Stolt, FGM Architects Inc.

David Yandel, FGM Architects Inc.

Thank you!