

SOLOMON CORDWELL BUENZ

PROGRAMMING + REPOSITIONING

FEBRUARY 17, 2023



© SOLOMON CORDWELL BUENZ

INTRODUCTION



Kristy Cubas
AIA
Associate Principal
Project Manager



Gail Wozniak
NCIDQ, LEED AP
Associate
Programming & Interior Design



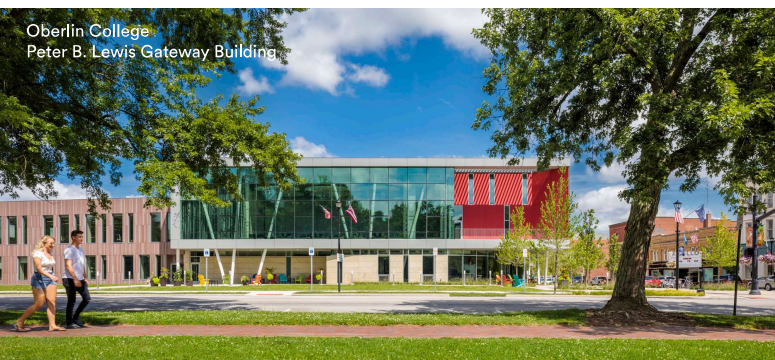
University of North Dakota
Wilkerson Commons Renovation



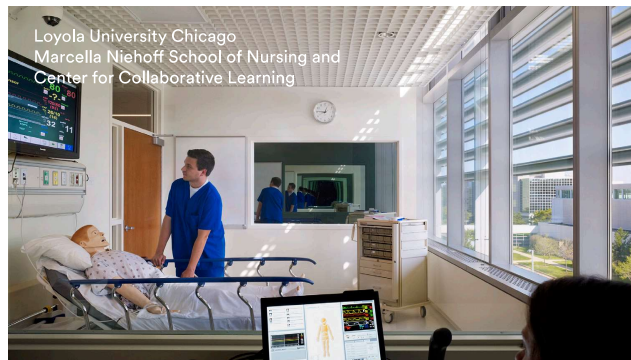
Columbia College Chicago
Cinema and Television Arts Department



Lake Forest College
Brown Hall



Oberlin College
Peter B. Lewis Gateway Building



Loyola University Chicago
Marcella Niehoff School of Nursing and
Center for Collaborative Learning



Pomona College
Center for Athletics, Recreation and Wellness



Butler University
Fairview House

ABOUT SCB

Founded in 1931

-
- Chicago
- San Francisco
- Boston
- Seattle

—

Architecture
Interior Design
Planning

—

300+ Design Professionals

-
- Campus Environments**
- Student Housing
- Student Life and Dining
- Athletics and Recreation
- Academics
- Science and Research
- Libraries
- Campus Planning



COLLEGE AND UNIVERSITY EXPERIENCE

Alma College
Arizona State University
A.T. Still University
Ball State University
Butler University
Cal Poly Humboldt
California State University, Channel Islands
California State University, San Bernardino
California State University, Sacramento
Case Western University
Columbia College Chicago
DeVry University
Drexel University
Dominican University
Illinois College
Illinois Institute of Technology
Illinois State University
James Madison University
Lake Forest College
Lewis University
Loyola University Chicago
North Carolina State University
Northeastern Illinois University
Northern Illinois University
Northwestern University
Oberlin College
Oregon State University
Rosalind Franklin University
Roosevelt University
San Jose State University
Santa Clara University
Saint Xavier University
School of the Art Institute of Chicago
Southern Illinois University at Carbondale
Southern Illinois University at Edwardsville
Texas A&M University, San Antonio
University of California, Berkeley
University of California, Davis
University of California, Irvine
University of California, Merced
University of California, Riverside
University of California, Santa Cruz
University of Chicago
University of Illinois at Chicago
University of Colorado, Boulder
University of Illinois at Springfield
University of Iowa
University of Kansas
University of Michigan
University of Minnesota
University of North Dakota
University of Notre Dame
University of San Francisco
University of Toledo
University of Utah
Valparaiso University
West Virginia University

**THE PROGRAM IN THE BUILDING IS NO LONGER
RELEVANT....**

**WE HAVE A CATALOGUE OF UNDERUTILIZED BUILDINGS AND SPACES
THAT WE DON'T KNOW HOW TO UTILIZE....**

**WE HAVE NEW PROGRAMS WE NEED TO DEVELOP BUT
NEED SPACE TO INCUBATE THEM....**

**THIS SPACE IS DATED, AND WE NEED TO REFRESH THIS
TO SPEAK TO CURRENT EXPECTATIONS....**

**HOW DO WE MANAGE EXPECTATIONS FOR NEW
PROGRAM REQUESTS....**

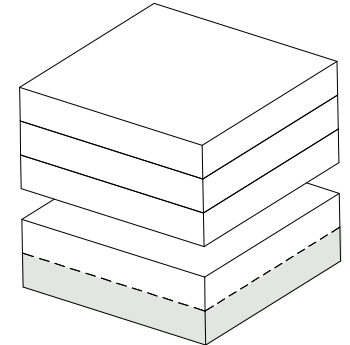
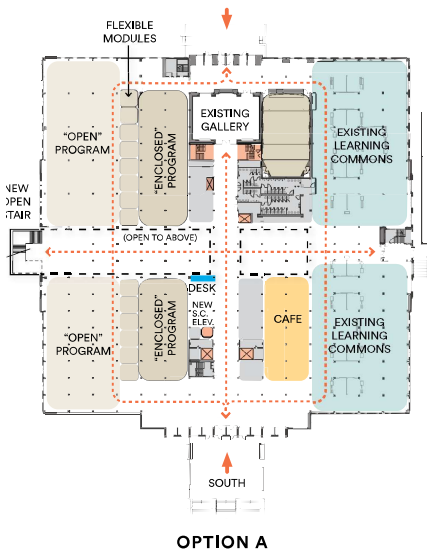
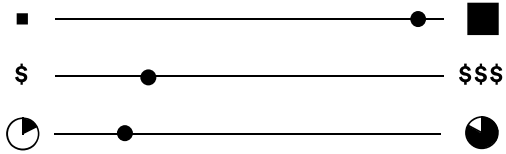
**HOW DO WE MANAGE COSTS OF FOR PROPOSED
CAMPUS INITIATIVES....**



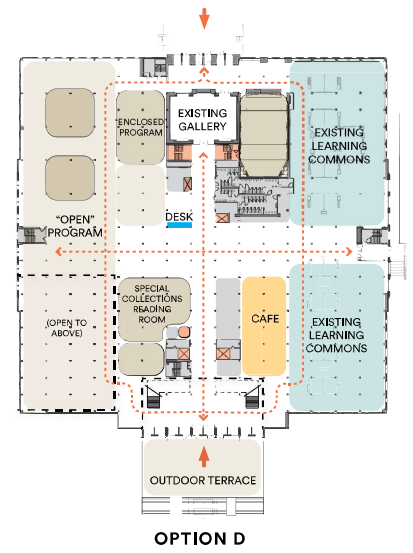
THE PROGRAM IN THE BUILDING IS NO LONGER RELEVANT....

UNIVERSITY OF IOWA

MAIN LIBRARY

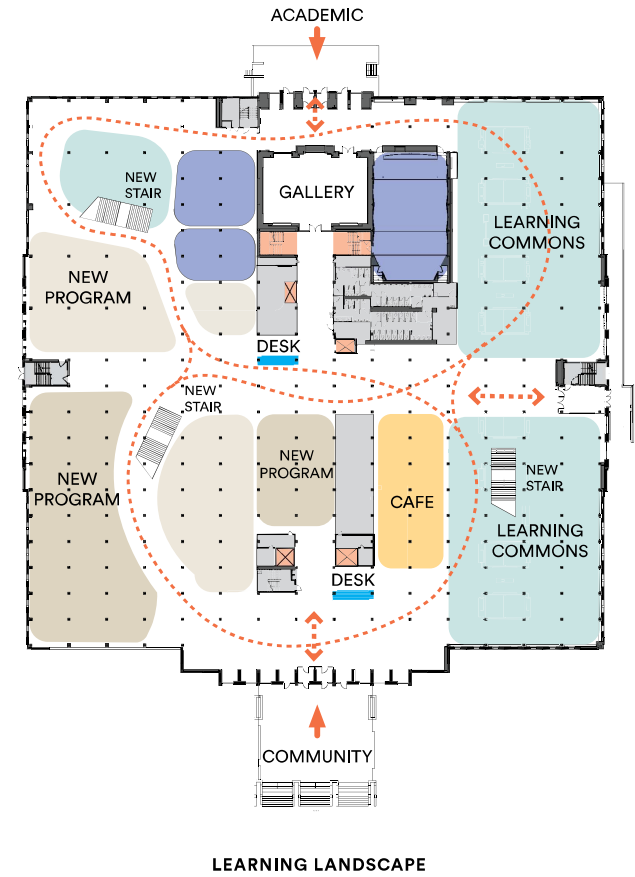
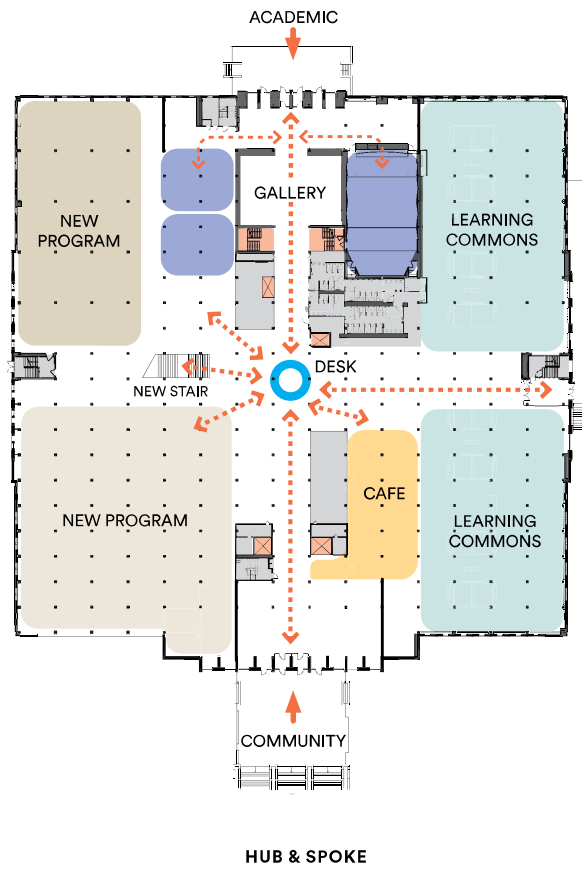
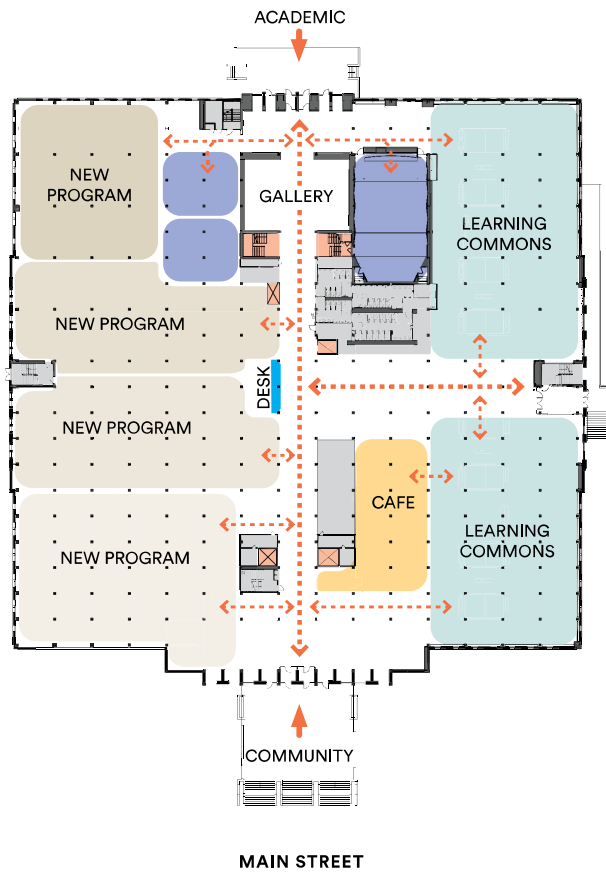


5
4
3
2
1



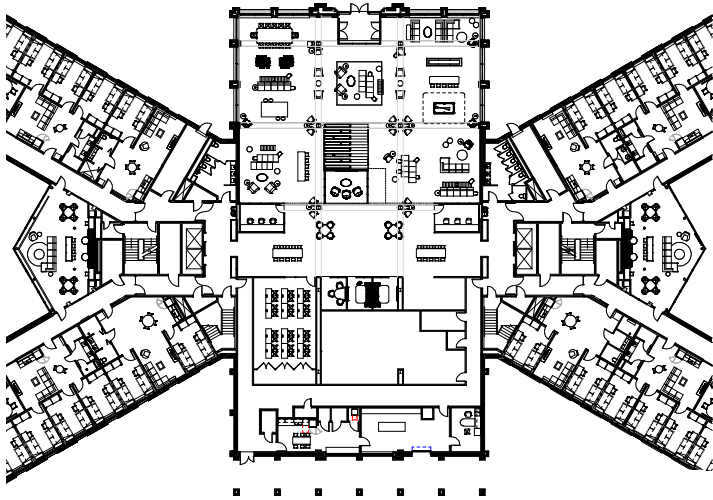
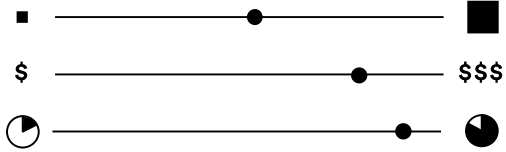
UNIVERSITY OF IOWA

MAIN LIBRARY



UNIVERSITY OF TOLEDO

PRESIDENTS HALL



GROUND FLOOR PARTIAL PLAN



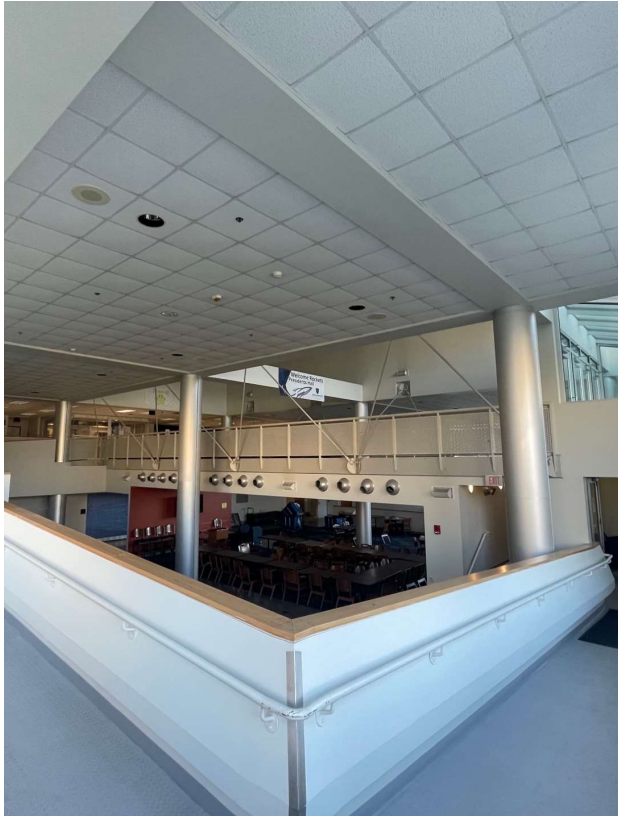
PROPOSED



EXISTING

UNIVERSITY OF TOLEDO

PRESIDENTS HALL



EXISTING COMMONS



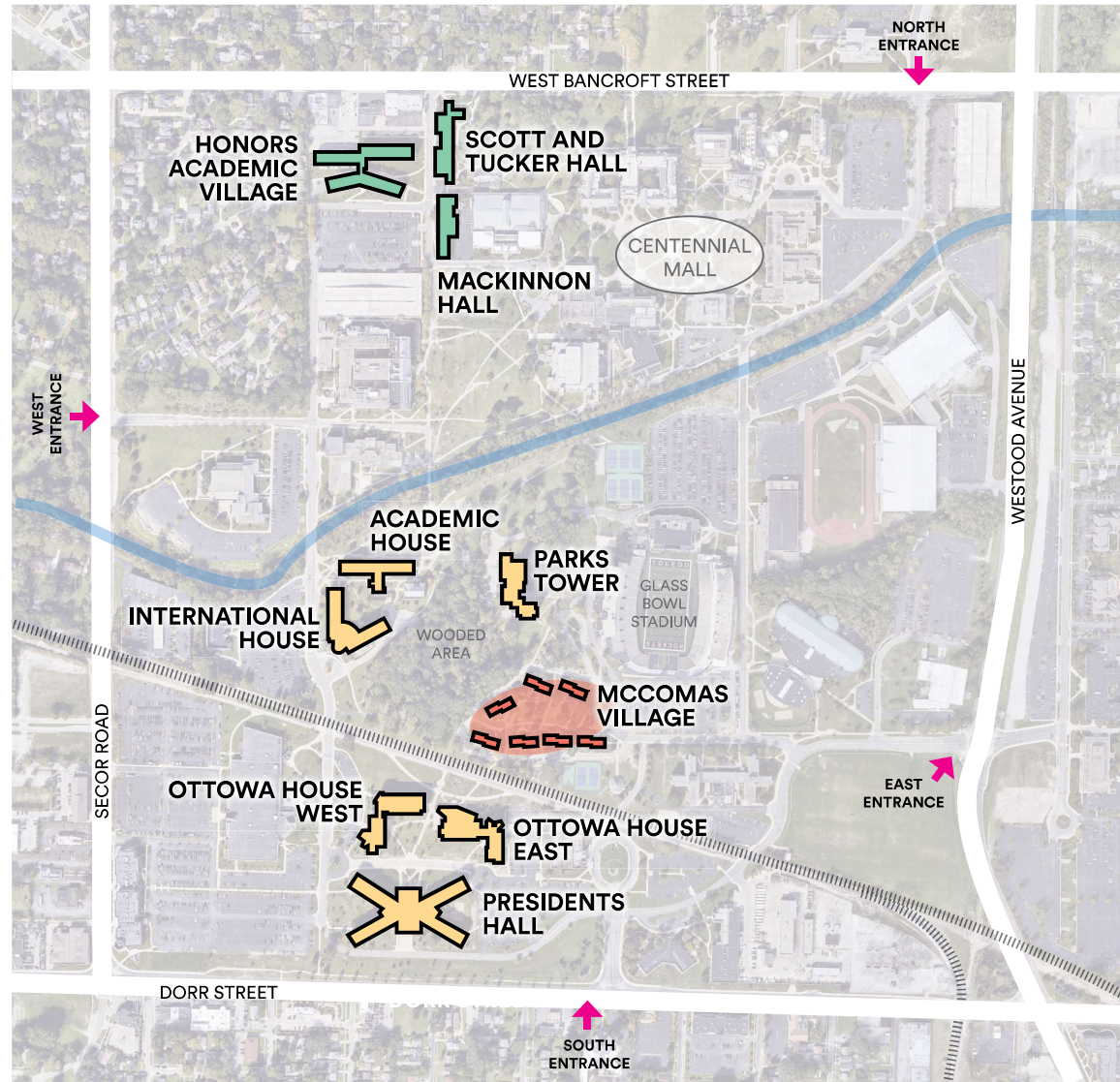
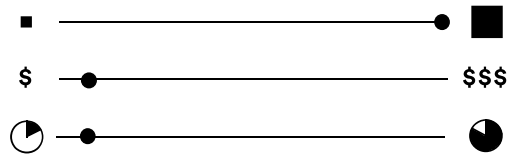
PROPOSED COMMONS



**WE HAVE A CATALOGUE OF UNDERUTILIZED BUILDINGS
THAT WE DON'T KNOW WHAT TO DO WITH....**

UNIVERSITY OF TOLEDO

BUILDING ASSESMENT



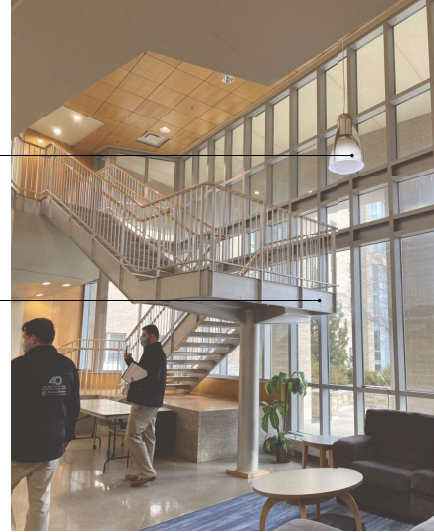
UNIVERSITY OF TOLEDO

BUILDING ASSESSMENT



FIXTURE TO BE REPLACED FOR A MORE "RESIDENTIAL" FEEL

WOOD AND METAL TREADS AND RISERS TO BE REFINISHED, RAILS AND STRINGERS TO BE PAINTED



EXISTING LOBBY

EXISTING ACT TO REMAIN - SITE ASSESSMENT TO DETERMINE SCOPE TO REMAIN IN PLACE

NEW PAINT THROUGH OUT

TRASH AND RECYCLING TO BE INTEGRATED INTO A MILLWORK HOUSING

NEW MILLWORK PRINT KIOSK



MATERIALS ASSESSMENT

Materials				
	Material	Description	Cond.	Rec.
A	Ceiling	ACT/Gyp	Poor	TBR/ PAR
		Wood Stn	Good	GTR
B	Walls	Gyp	Fair	PAR/ Paint
		Wood Stn	Poor	Re- finish
C	Floor/Base	VCT/Rubber Carpet/Rubber	Poor Poor	TBR TBR
D	Doors/Frame	Wood/HM	Good	Paint

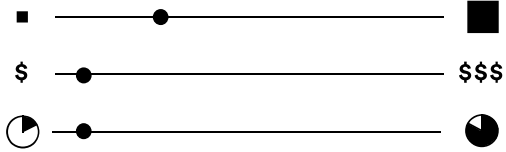
Systems				
	System	Description	Cond.	Rec.
E	Acoustics	N/A	N/A	N/A
F	AV Equipment	N/A	N/A	N/A
G	Electrical	Lighting: CFL downlights	Good	TBR
H	Plumbing	N/A	N/A	N/A

Equipment				
	Equipment	Description	Cond.	Rec.
I	Fixed	N/A	N/A	N/A
J	Built in Features	N/A	N/A	N/A

Notes

UNIVERSITY OF CHICAGO

1155 60TH ST.



🔓
OPEN TO PRIVATE

🔑
PRIVATE OFFICE SIZE

💻
WORKSTATION SIZE

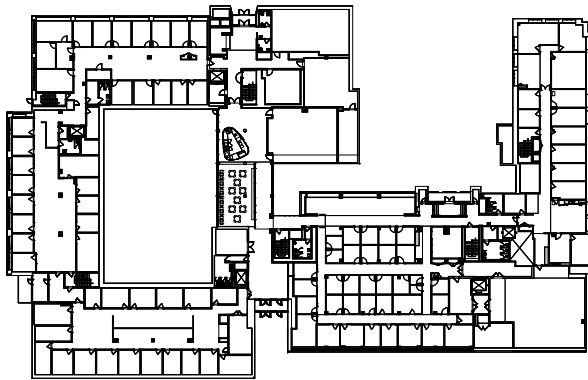
🪑
SHARED SPACE

💬
OPEN

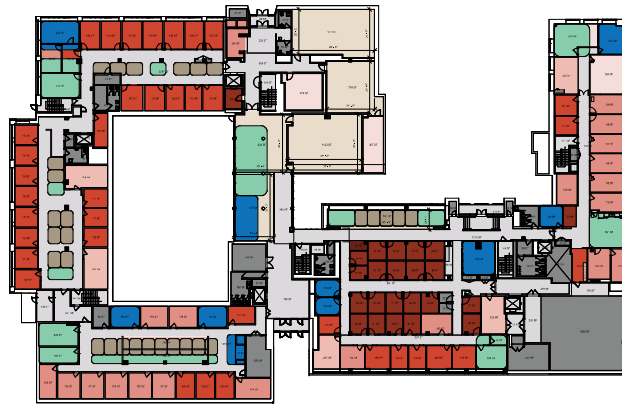
👤
OCCUPANCY COUNTS

	OPEN TO PRIVATE	PRIVATE OFFICE SIZE	WORKSTATION SIZE	SHARED SPACE	OPEN	OCCUPANCY COUNTS
RESEARCHED	15% PRIVATE	120* SF <small>*PER UCHICAGO MEETING</small>	48-56 SF	1 : 15 CONFERENCE ROOMS PER EMPLOYEE	20%	N/A
EXISTING	80% PRIVATE	74-325 SF	20-76 SF	1 : 13 CONFERENCE ROOMS PER EMPLOYEE	15%	225 117 OFFICES 60 24
MINIMAL CONSTRUCTION	58% PRIVATE	73-280 SF	56 SF	1 : 11 CONFERENCE ROOMS PER EMPLOYEE	16%	203 106 OFFICES 97
CLEAN SLATE CONSTRUCTION	15% PRIVATE	120* SF <small>*PER UCHICAGO MEETING</small>	56 SF	1 : 13 CONFERENCE ROOMS PER EMPLOYEE	21%	249 142 OFFICES 111

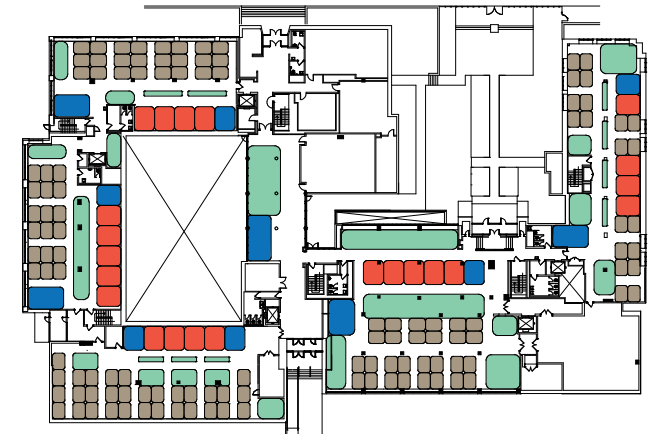
EXISTING CONDITIONS



MINIMAL CONSTRUCTION



CLEAN SLATE CONSTRUCTION



UNIVERSITY OF CHICAGO

1155 60TH ST.

DENSITY

GROWTH IN EFFICIENCY

OF USES

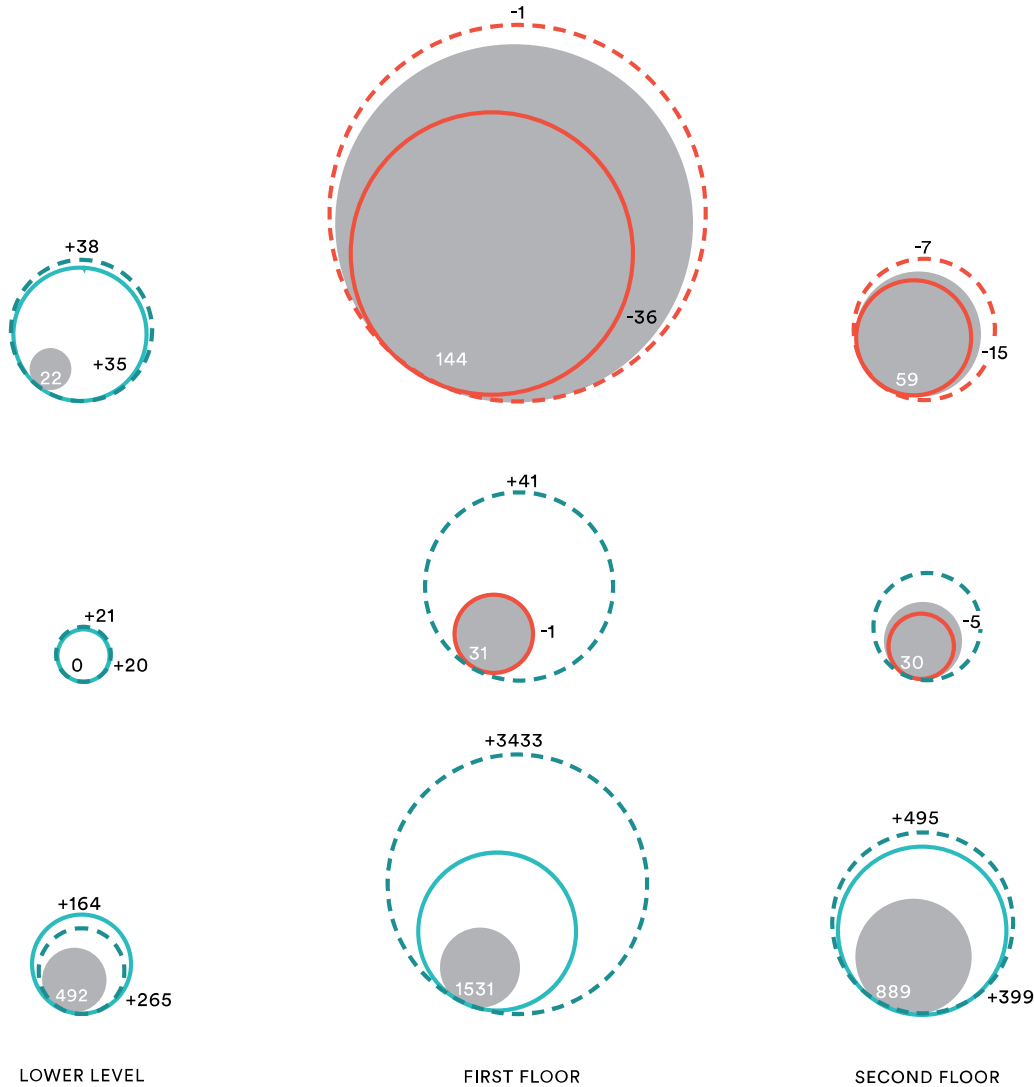
QUALITY

ACCESS TO DAYLIGHT

OF USES

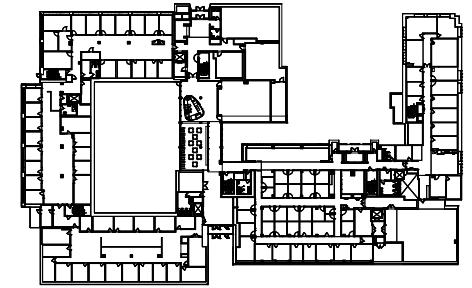
GROWTH IN COLLABORATION SPACE

SF

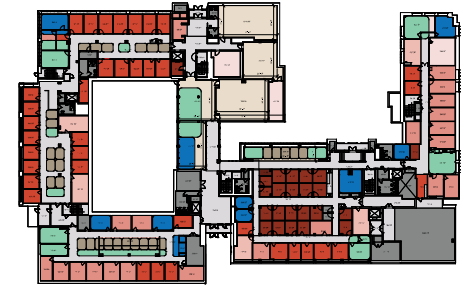


● EXISTING CONSTRUCTION ○ MINIMAL CONSTRUCTION ○ CLEAN SLATE CONSTRUCTION ● GROWTH ● NO GROWTH

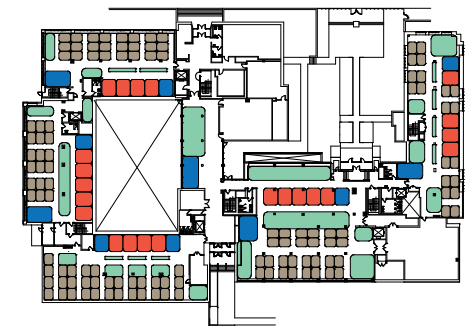
EXISTING CONDITIONS



MINIMAL CONSTRUCTION



CLEAN SLATE CONSTRUCTION

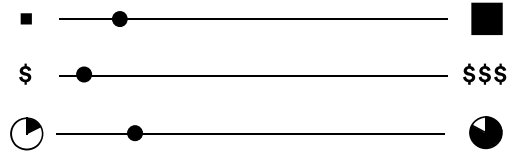


OSLOMON CORDWELL BENZ

**WE HAVE NEW PROGRAMS WE NEED TO DEVELOP BUT
NEED SPACE TO INCUBATE THEM...**

LOYOLA UNIVERSITY

CUNEO CENTER

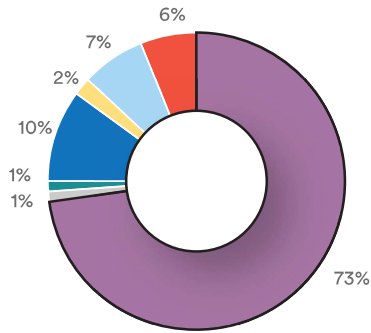


3,744
SCHEDULING HOURS PER ROOM PER YEAR

10.1%
SCHEDULING AVERAGE

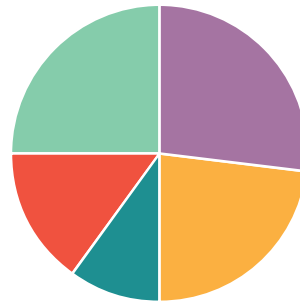
- LAB SPACE - LAB SPACE 12.5%
- LOUNGE/ PUBLIC - CLASSROOM 15.0%
- CLASSROOM - SEMINAR 2.8%
- SEMINAR - CONFERENCE 0%*
- CONFERENCE

ROOM 431 SCHEDULING ANALYSIS



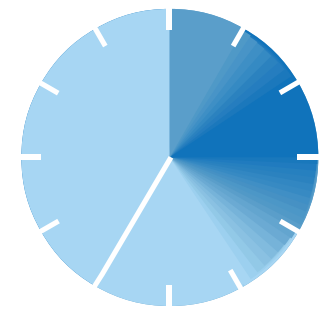
USE BY DEPARTMENT

- UME
- GBS
- CME
- LUHS
- Departmental
- LUC
- MNSON
- GME
- Other

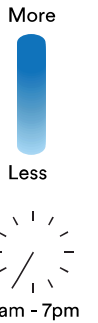


USE BY DAY

- Monday
- Tuesday
- Wednesday
- Thursday
- Friday
- Saturday



USE BY TIME



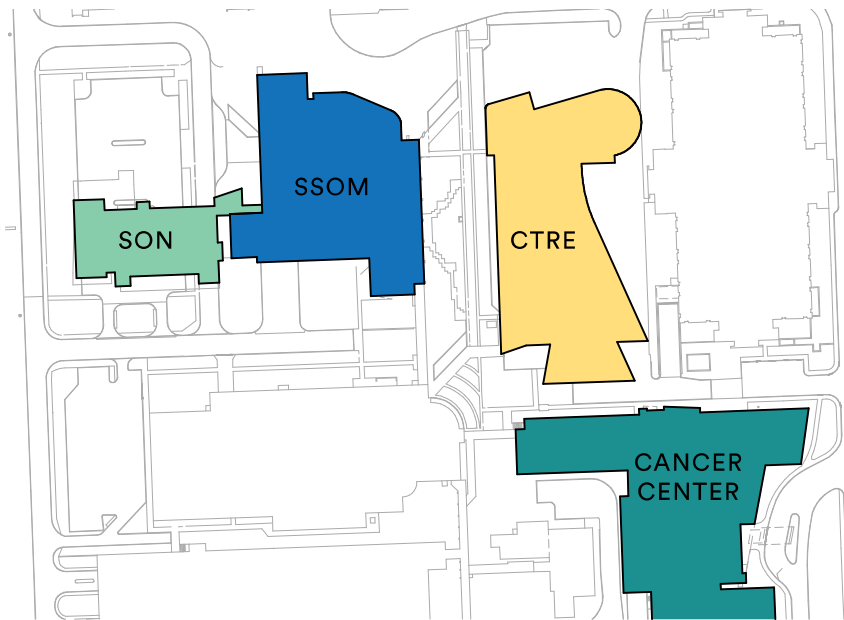
LOYOLA UNIVERSITY

CUNEO CENTER

PROGRAMMING

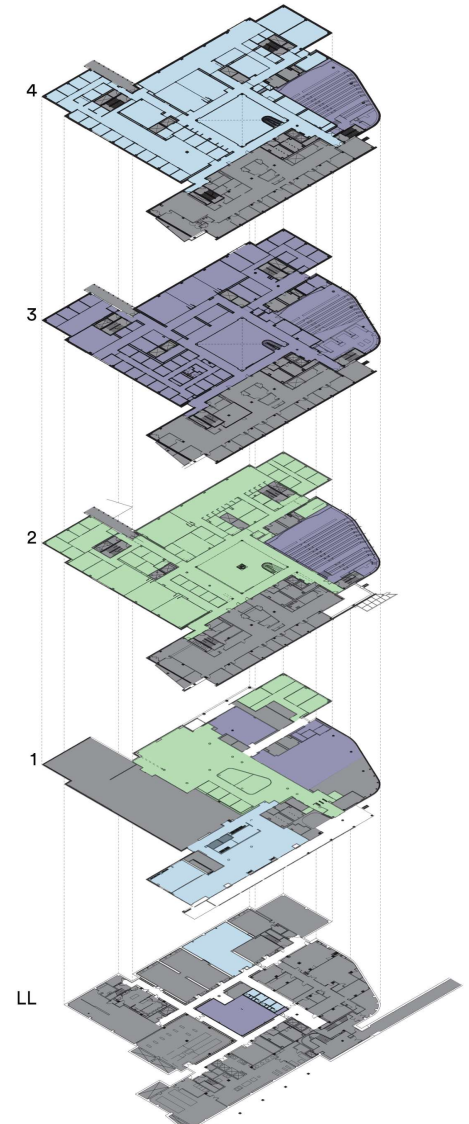
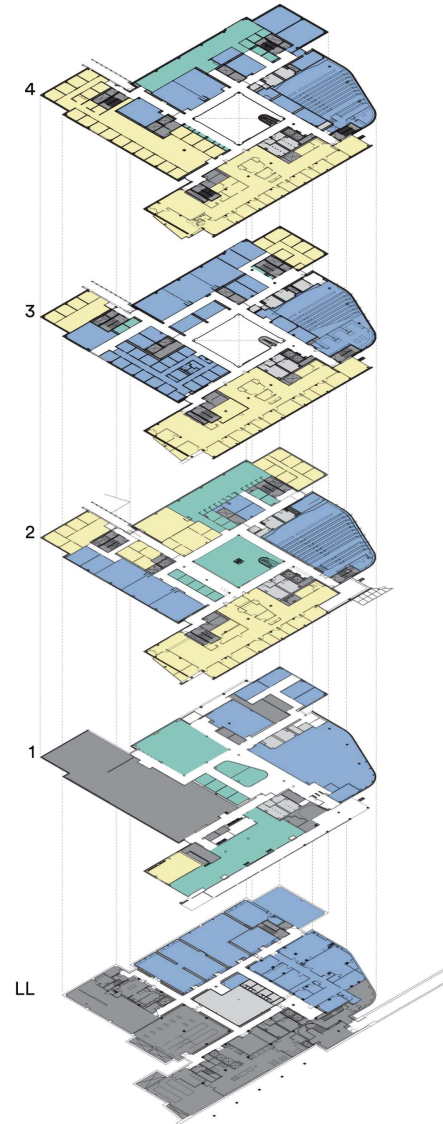
- CLASSROOM/LAB
- STUDY/MEETING
- OFFICE
- BOH
- NIC

MASTER PLAN SCOPE



PHASING

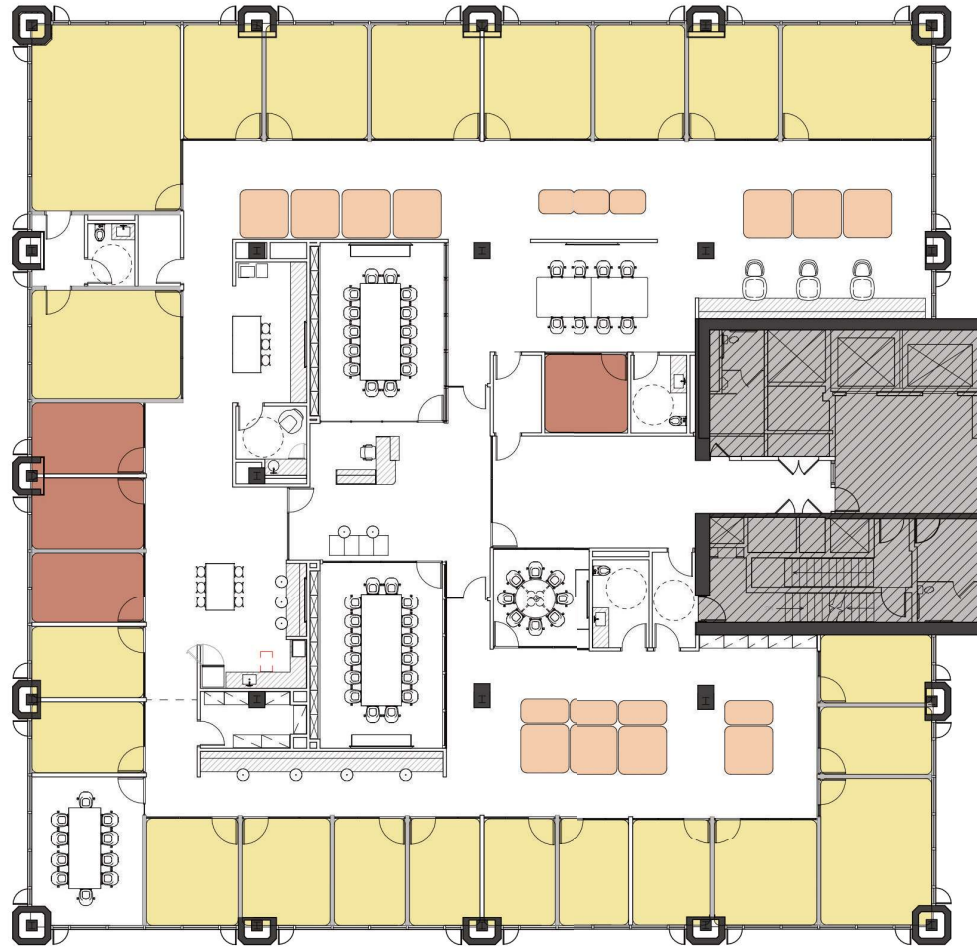
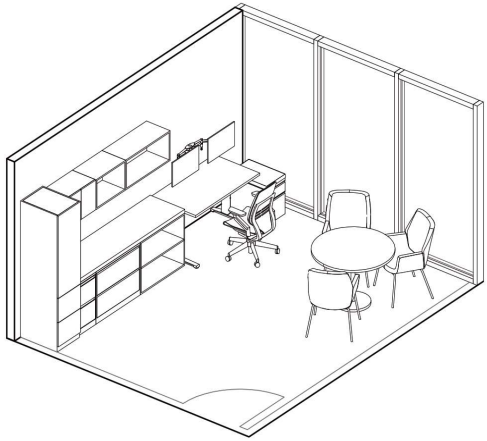
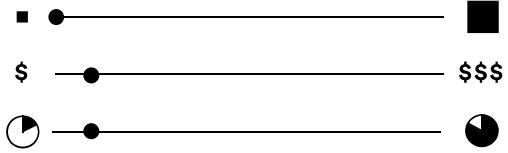
- PHASE 1
- PHASE 2
- PHASE 3
- NIC



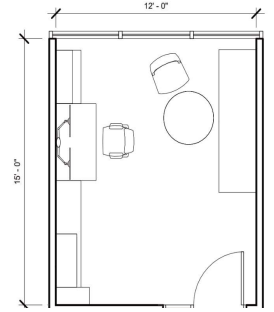
THIS SPACE IS DATED, AND WE NEED TO REFRESH THIS TO SPEAK TO CURRENT EXPECTATIONS....

UNIVERSITY OF ILLINOIS CHICAGO

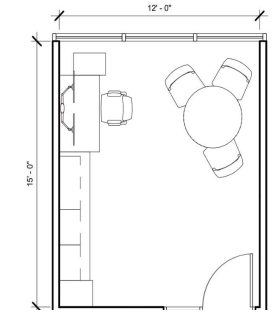
AOB



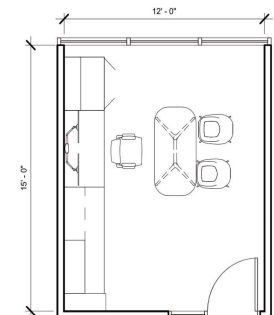
PROPOSED PROGRAM



A



B

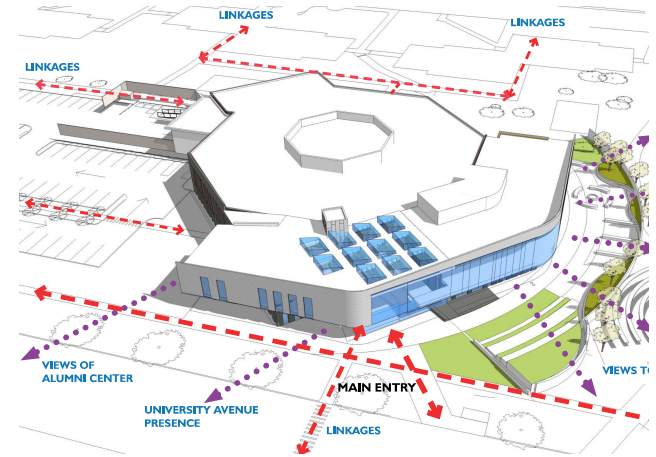
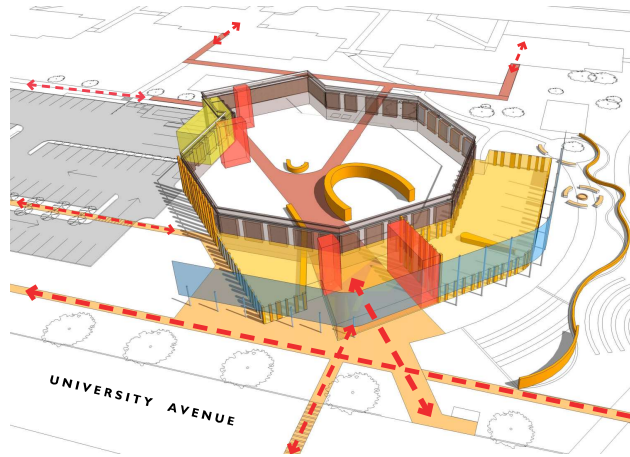
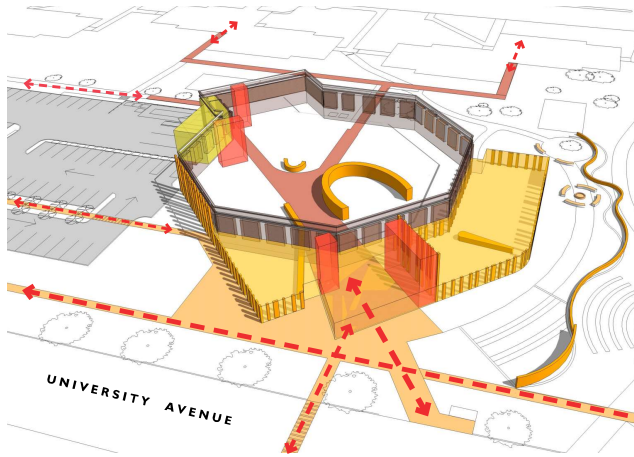
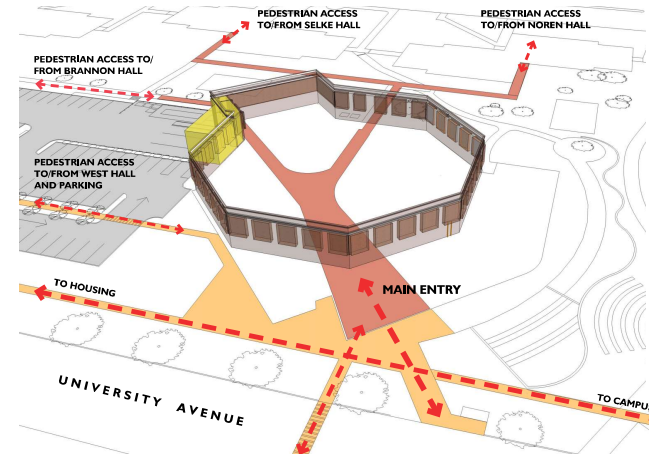
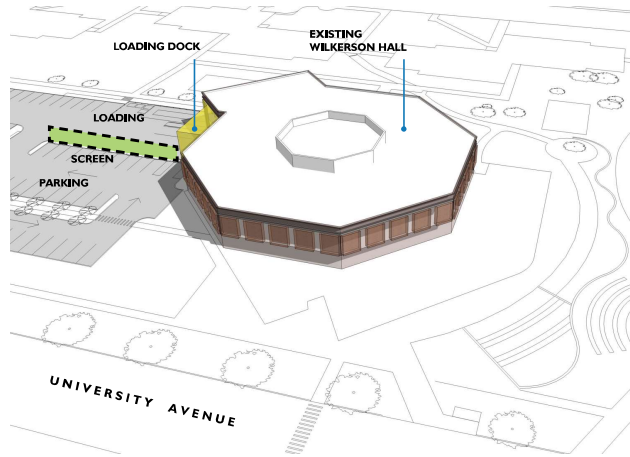
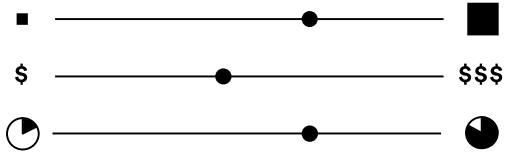


C

OFFICE PROTOTYPES

UNIVERSITY OF NORTH DAKOTA

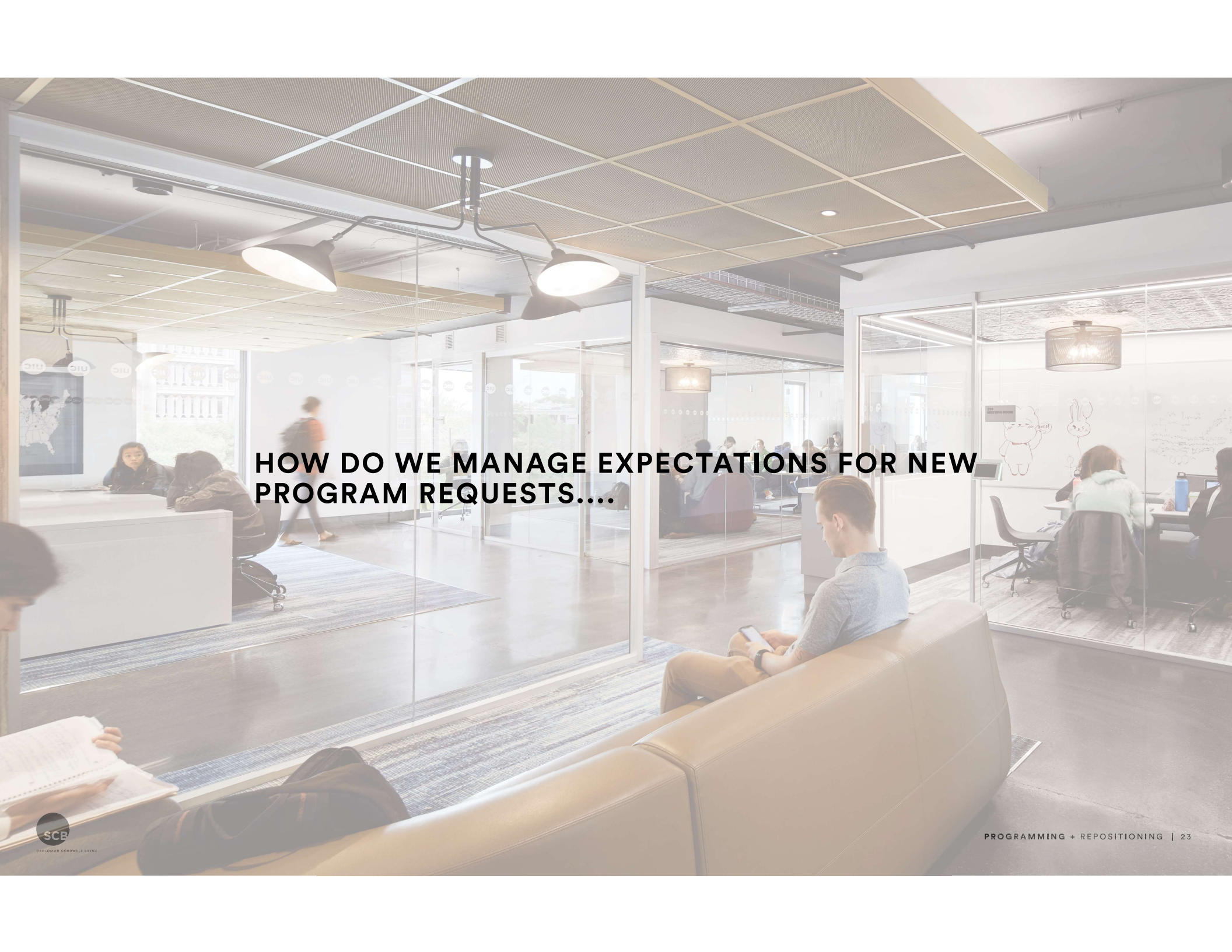
WILKERSON HALL



UNIVERSITY OF NORTH DAKOTA

WILKERSON HALL

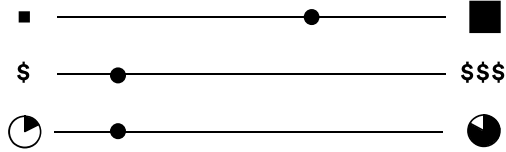




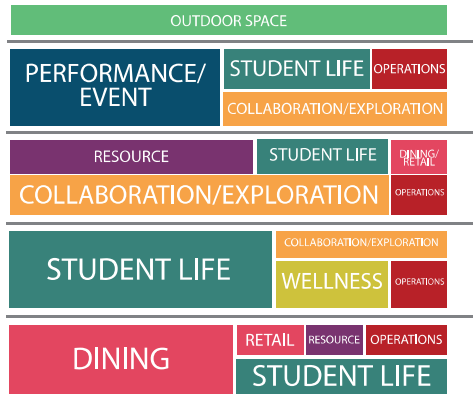
HOW DO WE MANAGE EXPECTATIONS FOR NEW PROGRAM REQUESTS....

COLUMBIA COLLEGE

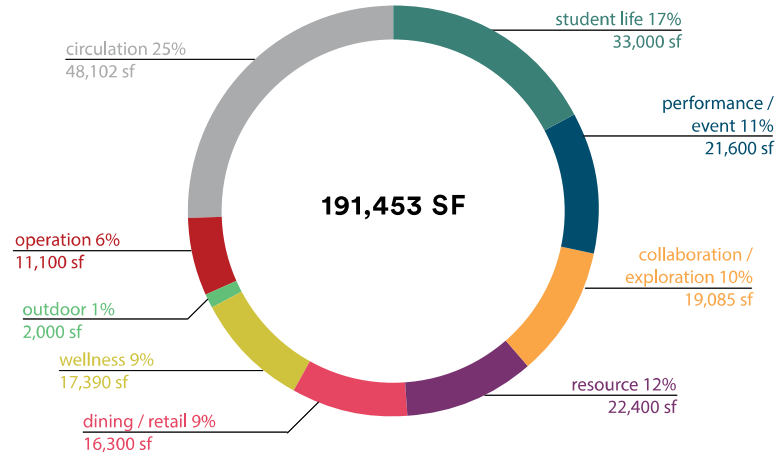
STUDENT CENTER



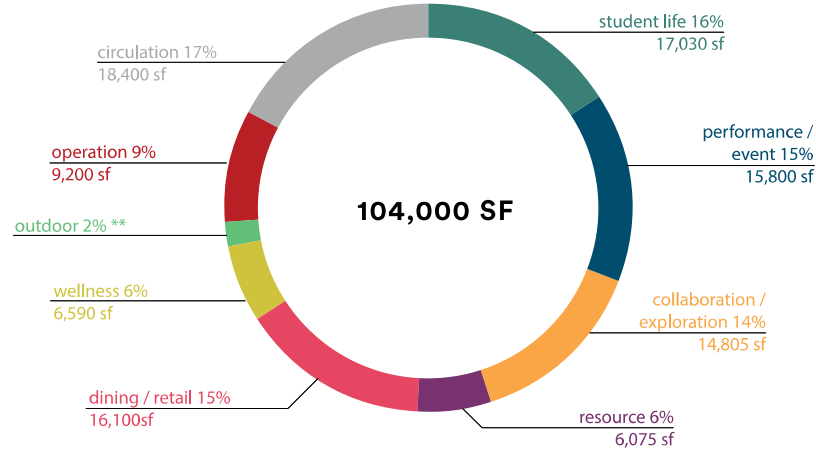
program STACKING DIAGRAM



INITIAL REQUESTED PROGRAM



RECCOMENDED PROGRAM



STUDENT LIFE

- LOBBY
- SOCIAL STAIR
- LOUNGES - RECREATIONAL, GRADUATE, QUIET, AND BREAKOUT SPACES
- GRAFFITI ROOM
- RADIO STUDIO
- INTERFAITH ROOMS
- STUDENT ORGANIZATION CENTER
- STUDENT GOVERNMENT
- MULTICULTURAL SPACE

PERFORMANCE/EVENT

- MULTIPURPOSE ROOM - LARGE/ EVENT
- CATERING PREP ROOM
- MULTIPURPOSE STORAGE
- TEACHING KITCHEN
- MULTI-MEDIA ROOMS
- SCREENING ROOM
- PERFORMANCE THEATRE
- GREEN ROOMS

COLLABORATION/ EXPLORATION

- MAKER SPACE
- WORK ROOM
- DISPLAY/EXHIBIT SPACE
- MULTIPURPOSE ROOMS - SMALL
- MULTIPURPOSE ROOMS - LARGE
- COMPUTER LAB
- MEETING ROOMS - LARGE
- MEETING ROOMS - SMALL
- CREATION LAB - DIGITAL
- MAKER SPACE SUPPORT
- RESERVABLE STUDIO SPACE
- RECORDING ROOM - DIGITAL/ FILM
- RECORDING ROOM - SOUND
- MUSIC RECORDING BOOTH
- PRACTICE ROOMS
- STUDY ROOMS

RESOURCE

- COUNSELING & WELLNESS
- ACADEMIC ADVISING
- CONCIERGE OFFICE
- CAREER CENTER
- I.T. HELP DESK

DINING/RETAIL

- DINING HALL
- FORMAL MULTIPURPOSE ROOM
- CATERING PREP ROOM
- FORMAL MULTIPURPOSE STORAGE
- COLUMBIA RETAIL SPACE
- RETAIL EXHIBIT SPACE
- ALUMNI CENTER
- WELCOME CENTER

WELLNESS

- GYMNASIUM WITH RUNNING TRACK
- CLIMBING WALL
- MULTIPURPOSE FITNESS ROOMS
- WELLNESS ROOM
- LOCKER ROOMS WITH SHOWERS
- GENDER NEUTRAL RR WITH SHOWERS
- FITNESS CENTER
- NAP ROOMS

OPERATION

- LOADING DOCK
- DEDICATED ENGINEERING SPACE
- BIKE ROOM
- SECURITY DESK
- SNOW EQUIPMENT STORAGE
- RESTROOMS - MEN'S AND WOMEN'S
- GENDER NEUTRAL RESTROOMS
- LOCKER ROOM
- GENERAL STORAGE
- CLEAN UP ROOMS

OUTDOOR

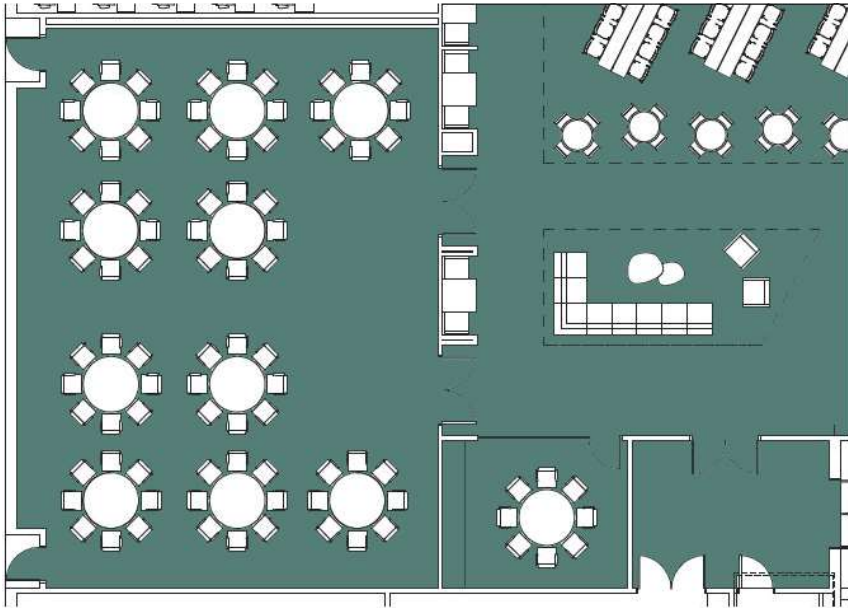
- PAPERMAKERS GARDEN
- GARDEN STORAGE
- PAPERMAKERS MULTIPURPOSE ROOM
- OUTDOOR LOUNGE

A modern, bright office space with large windows, people working at desks, and a man writing on a whiteboard. The office is open-plan with glass partitions. In the foreground, several people are seated at a long white table, working on laptops. In the background, a man is standing and writing on a whiteboard, while another man sits nearby. The room is well-lit with natural light from the windows and modern pendant lighting.

**HOW DO WE MANAGE COSTS OF FOR PROPOSED
CAMPUS INITIATIVES....**

Cost Management | Pricing the Program

Multipurpose Room



Space: **Multipurpose Room**

SQF: 1,863 SF

Description

A space to host classes, events and performances with a sound system, adjustable lighting, acoustical control, and flexible seating. Size of room can accommodate 500 banquet style. Room to have movable partitions to subdivide room into smaller spaces.

Materials

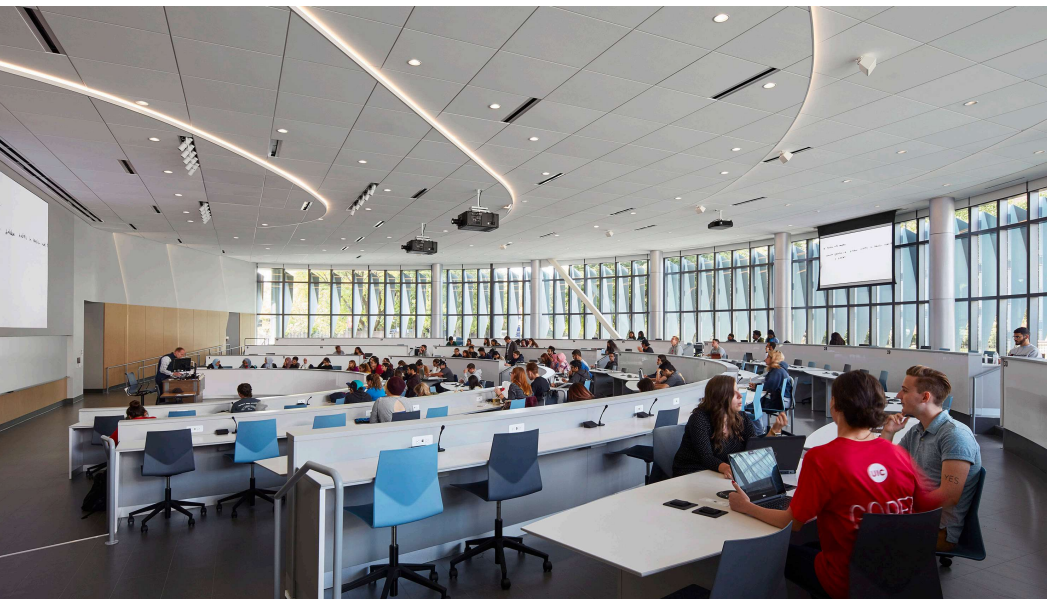
Floor:	Carpet/LVT
Ceiling:	Wood Acoustical Ceiling
Walls/Base:	Rubber Base; Level 5 finish at drywall with applied wall covering wainscoting and chair rail
Doors/Frame:	Painted hollow metal

Systems

Acoustic:	STC-45, NC 35-40
AV Equipment:	Drop down projection screen (4), adjustable that can be accessed when the room is subdivided
Security:	Key card at door access
Mechanical:	Linear diffusers
Electrical:	Access to power distributed throughout the space at both the walls and floor. Adjustable lighting and sound systems that can be controlled and dimmed when room is subdivided.
Plumbing:	N/A
Telecom:	No special requirement

Equipment

Fixed:	Wall mounted back painted glass dry erase boards.
Movable Equipment/ Furniture:	Stackable chairs equal to KI Opt 4 and 60" round foldable tables with carts for storage
Built In Features:	Demountable wall that divides the room in half
Special Requirements:	N/A



THANK YOU

