

Propelling the Next Generation

Advancements and Trends in CTE Facility Design



DEMONICA KEMPER ARCHITECTS

*Illinois Community College
Chief Financial Officers*

Industrial Machinery Mechanics, Electro-Mechanical Technicians, Industrial Engineering Technicians

- Median Salary Range \$51,630 - \$57,790
- Projected Growth (through 2028) 1% to 5%

CNC Operators

- Median Salary Range \$53,190
- Projected Growth (through 2028) 20%

HVAC/R Mechanics

- Median Salary Range \$47,080
- Projected Growth (through 2028) 12.6%

Automotive Service Technicians

- Median Salary Range \$42,970
- Projected Growth (through 2028) 3.85%

Solar Photovoltaic Installers

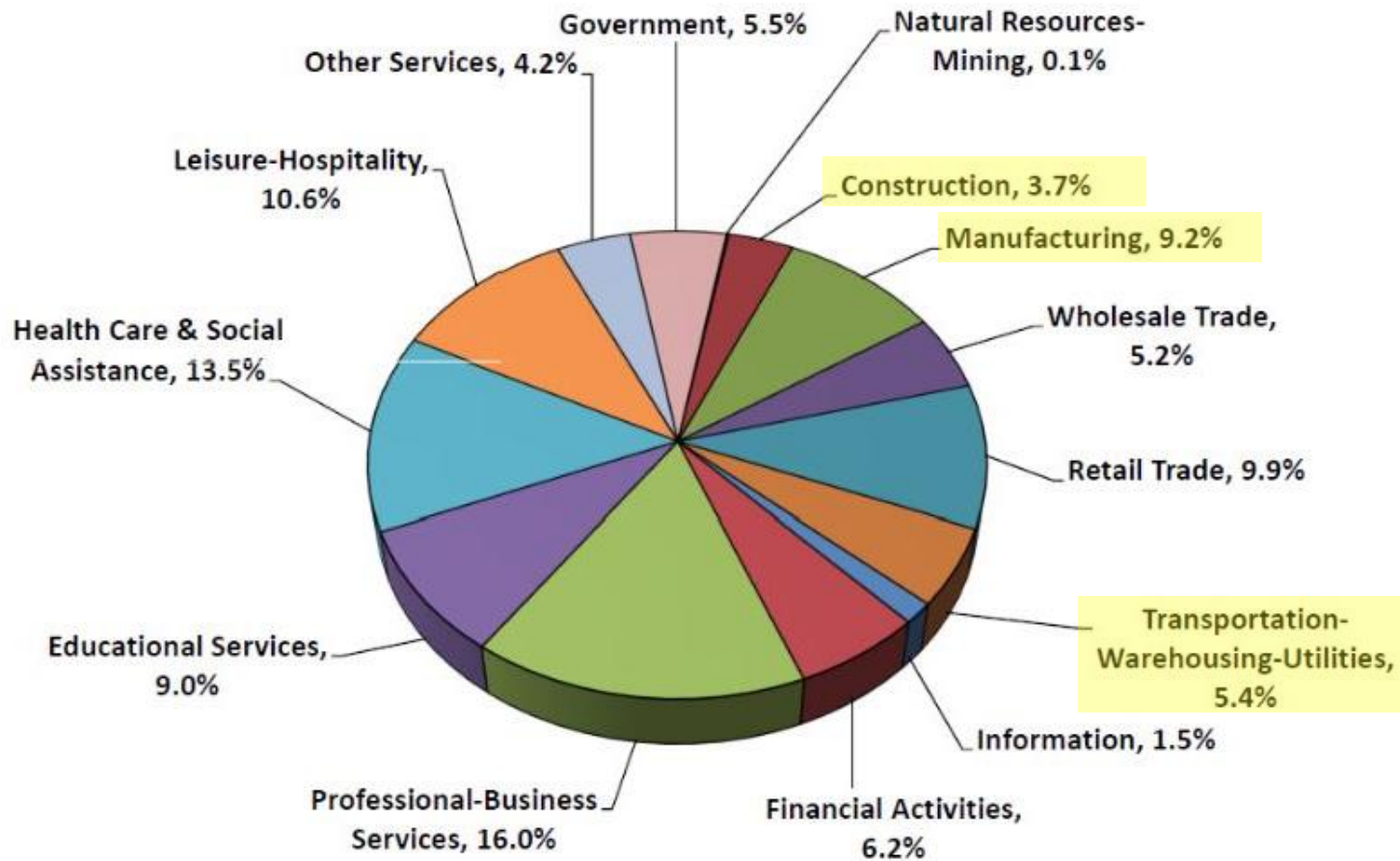
- Median Salary Range \$42,680
- Projected Growth (through 2028) 63.3%

Wind Turbine Service Technicians

- Median Salary Range \$54,370
- Projected Growth (through 2028) 56.9%

Source: U.S. Bureau of Labor Statistics

State of Illinois Industry Employment Projections to 2026



Professional-Business Services, Health Care & Social Assistance, Leisure-Hospitality, Retail Trade, and Manufacturing are projected to be the largest employing industries in 2026. The largest expansion will be in Professional-Business Services and Leisure-Hospitality, with projected employment growth of 177,000.

EQUIPMENT – DRIVEN DESIGN

Welding Lab

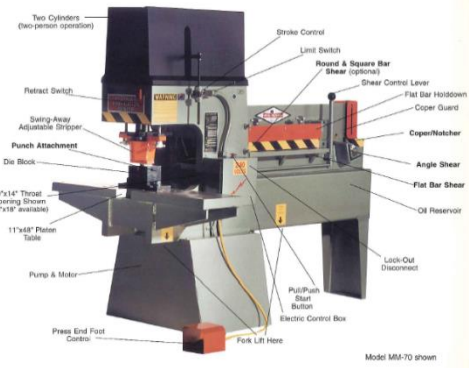
Item #	Item	Quantity	New	Existing	Manufacturer	Model No.	Length	Width	Height	Unit Price	Total Price
100	Self-Contained Welding Booths	8	X		Clean Air America	Weldstation LEAF Dual	41	116	124	\$12,000.00	\$ 96,000.00
101	SMAW / GTAW Welders	16	X		Lincoln	(Lin) K2618-1	26	22	31	\$5,700.00	\$ 91,200.00
101	SMAW / GTAW Welder Spare	1	X		Lincoln	(Lin) K2618-1	26	22	31	\$5,700.00	\$ 5,700.00
102	GMAW Welders	16	X		Lincoln	K3520-1	40	18	37.3	\$2,800.00	\$ 44,800.00
103	NOT USED					TBD					
104	GMAW Welders	1	X		Lincoln	K4023-1	39	19	31.8	\$2,800.00	\$ 2,800.00
105	Oxy-Acetylene Torch Sets	17	X		Victor	TBD				\$400.00	\$ 6,800.00
106	Tungsten Grinder / Vacuum	1	X		Diamond Ground	DPG-1-V2	36	36	52	\$2,800.00	\$ 2,800.00
107	Pipe Beveler	2	X		E. H. Wachs	206	19	12	28	\$7,800.00	\$ 15,600.00
108	Metal Shear / Iron Worker	1	X		Kalamazoo	70 ton	74	48	68	\$25,000.00	\$ 25,000.00
109	Air Compressor	1	X		Kaeser Compressor	M460 - 59 CFM @160 PSI				\$8,000.00	\$ 8,000.00
110	Direct Pressure Blast Cabinet	1	X		Econoline	TBD	48	38	?	\$5,500.00	\$ 5,500.00
111	Downdraft grinding table	2	X		Denray	3648G	36	48		\$6,500.00	\$ 13,000.00
112	Adjustable steel stools	18	X		McMaster Carr Cat.	4833T42		13	29	\$250.00	\$ 4,500.00
113	Bench Grinders	2	X		Baldor 10 in. dust collector	Paxton Paterson Cat.				\$2,000.00	\$ 4,000.00
114	Robotic Arc Trainer	1	X		Lincoln	AD2446-2	70.2	68.2	94.2	\$70,000.00	\$ 70,000.00
115	Plasma Arc Cutter	1	X		Lincoln	Tomahawk 1500 (K2809-1)	25.4	11.8	17.9	\$2,000.00	\$ 2,000.00
115A	Metal Table for 115	1	X			TBD					
116	Metal Portable Mechanical Beveler	1	X		Trumpf	TBD				\$2,000.00	\$ 2,000.00
116A	Table for 116	1	X			TBD					
117	Weld Watch Video System for Demo	1	X		Weld Vision	V2019-edu				\$15,000.00	\$ 15,000.00
118	Steel Shelves welded	6	X		32x72x18	McMaster Carr 7673T15	32	18	72	\$375.00	\$ 2,250.00
119	Welding Helmets	20	X		Weldmark	BF8VS9-13				\$200.00	\$ 4,000.00
120	Misc. tools	1	X		Hand Tools, etc. to go in cabinets	TBD				\$5,000.00	\$ 5,000.00
121	Heavy Duty Steel carts	2	X		McMaster Carr	2204T16	30	18	35	\$500.00	\$ 1,000.00
122	Heavy Duty Steel carts	3	X		McMaster Carr	2826T52	24	36	30	\$314.75	\$ 944.25
123	Steel cabinets fork capable	1	X		Grainger / Mcmaster	TBD				\$3,000.00	\$ 3,000.00
124	Metal storage racks	2	X		TBD	TBD				\$1,000.00	\$ 2,000.00
125	Tool carts (bench height tool cabinets)	2	X		TBD	TBD				\$750.00	\$ 1,500.00
126	Heavy duty drawer cabinets	2	X		McMaster Carr	TBD				\$500.00	\$ 1,000.00
127	Safety items, screens etc.	1	X		TBD (see note below)	TBD				\$2,500.00	\$ 2,500.00
128	Storage shelving	3	X		McMaster Carr	7673T16	36	24	72	\$430.00	\$ 1,290.00
129	Forklift	1	X		Hyster (Alta Equipment Company)	E30-40XN	127	40	88.5	\$15,000.00	\$ 15,000.00
130	Large Metal Layout Table	3	X		TBD	TBD	72	48	30"		
											\$ 454,184.25



EQUIPMENT – DRIVEN DESIGN



100
WELDING BOOTH
WXDXH: 58 X 41 X 72 in



108
METAL SHEAR/ IRON WORKER
WXDXH: 74 X 48 X 68 in



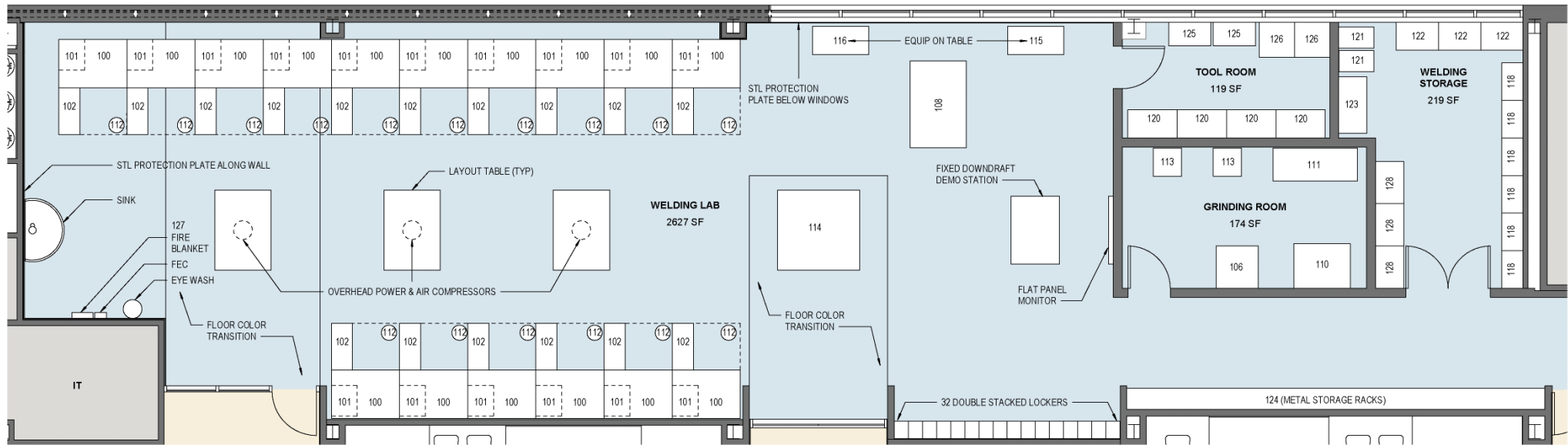
114
ROBOTIC ARC TRAINER
WXDXH: 74 X 48 X 68 in



115
PLASMA ARC CUTTER
WXDXH: 19 X 9 X 15 in



102
GMAW Welder
WXDXH: 40 x 18 x 37 in



EQUIPMENT – DRIVEN DESIGN



300
Level / Flow Process Control Learning System – T5552
On Table: 72" L x 30" W X 30" H



301
Temperature Process Control Learning System – T5553
On Table: 72" L x 30" W X 30" H



302
Analytical Process Control Learning System – T5554
On Table: 72" L x 30" W X 30" H



303
Pressure Process Control Learning System – T5555
On Table: 72" L x 30" W X 30" H



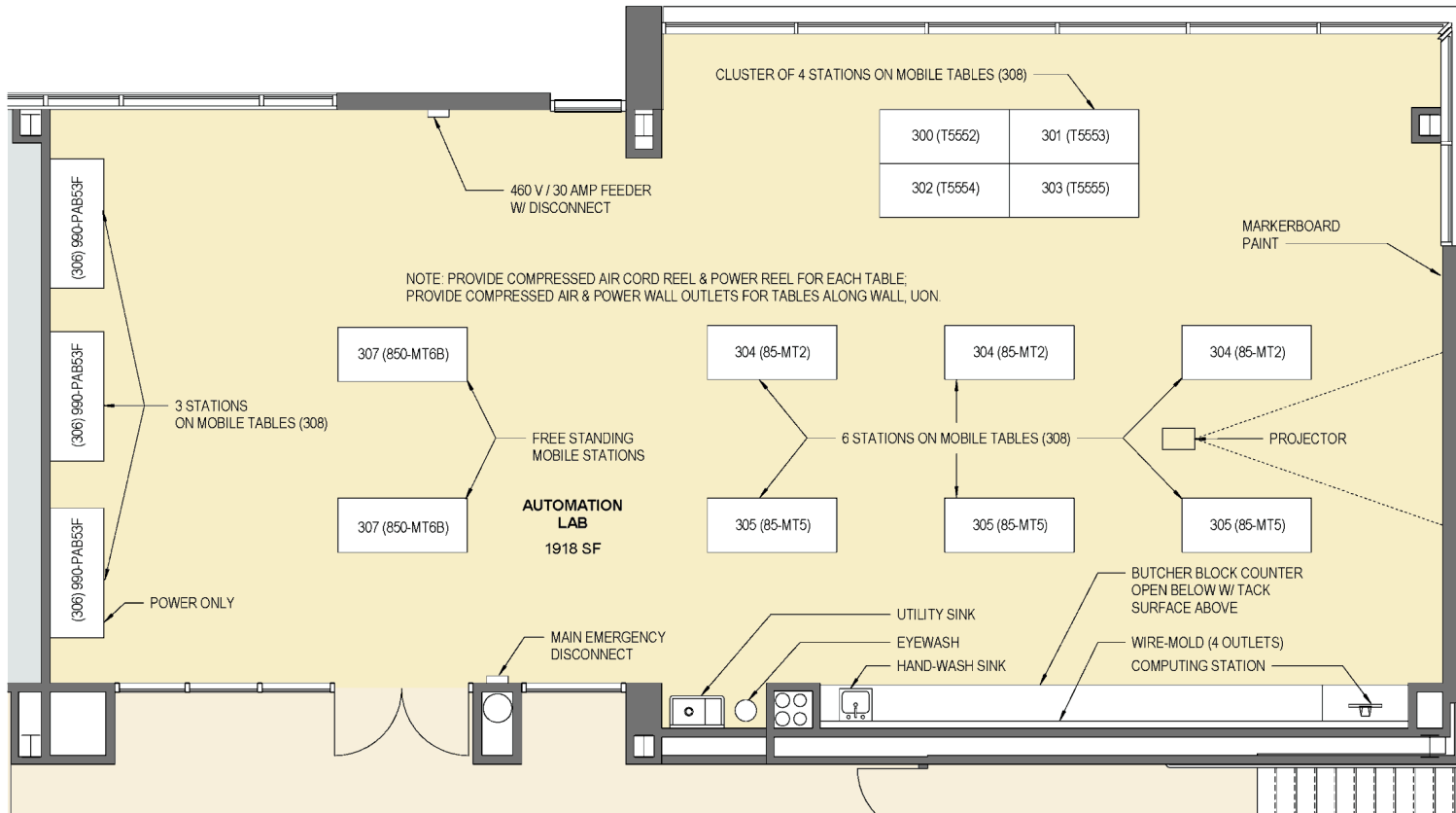
305
Electrical Motor Control Learning System
On Table: 72" L x 30" W X 30" H



306
Portable PLC Troubleshooting Learning System
On Table: 72" L x 30" W X 30" H



307
Electrical Wiring Learning System
On Table: 72" L x 30" W X 30" H

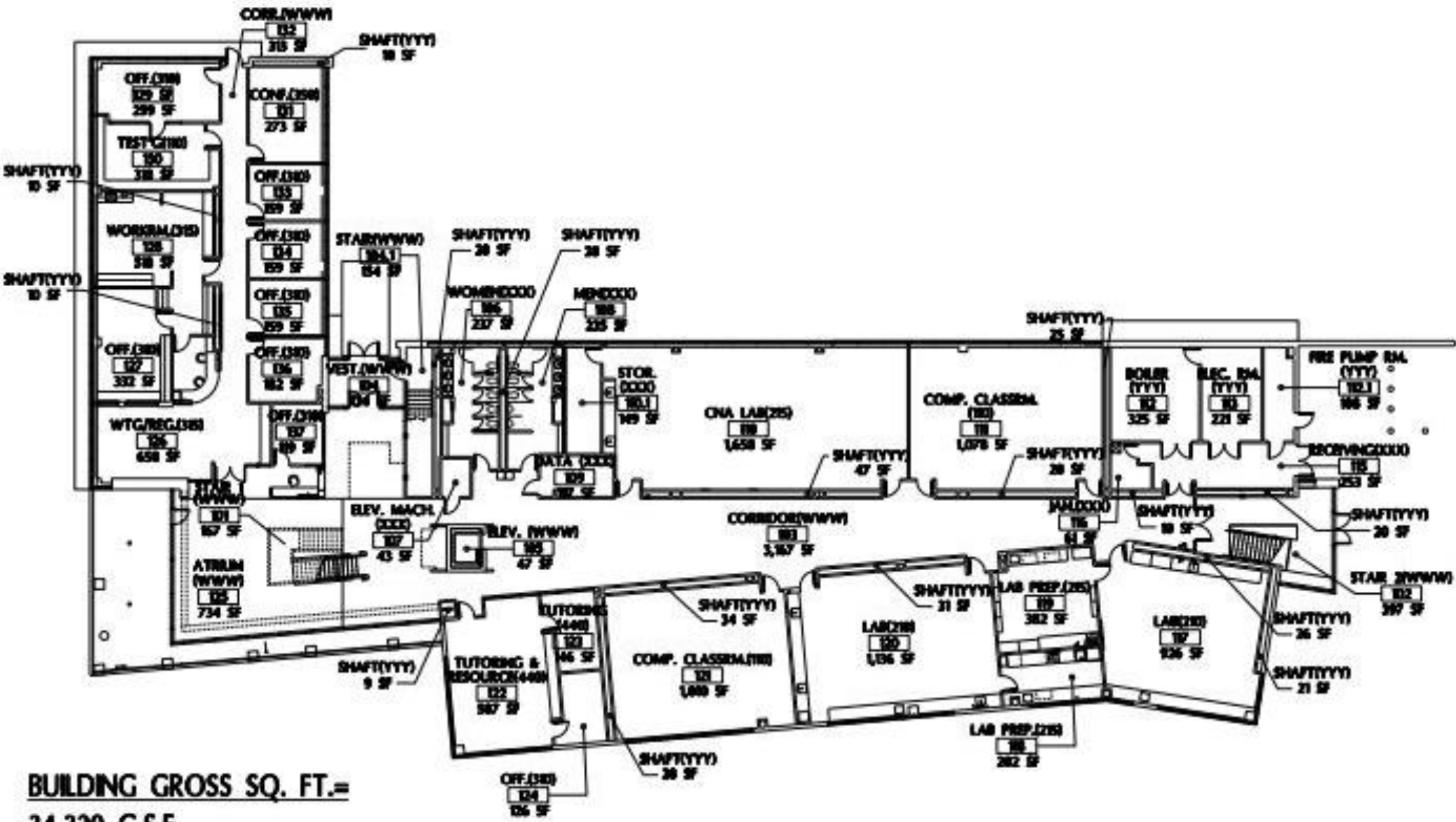


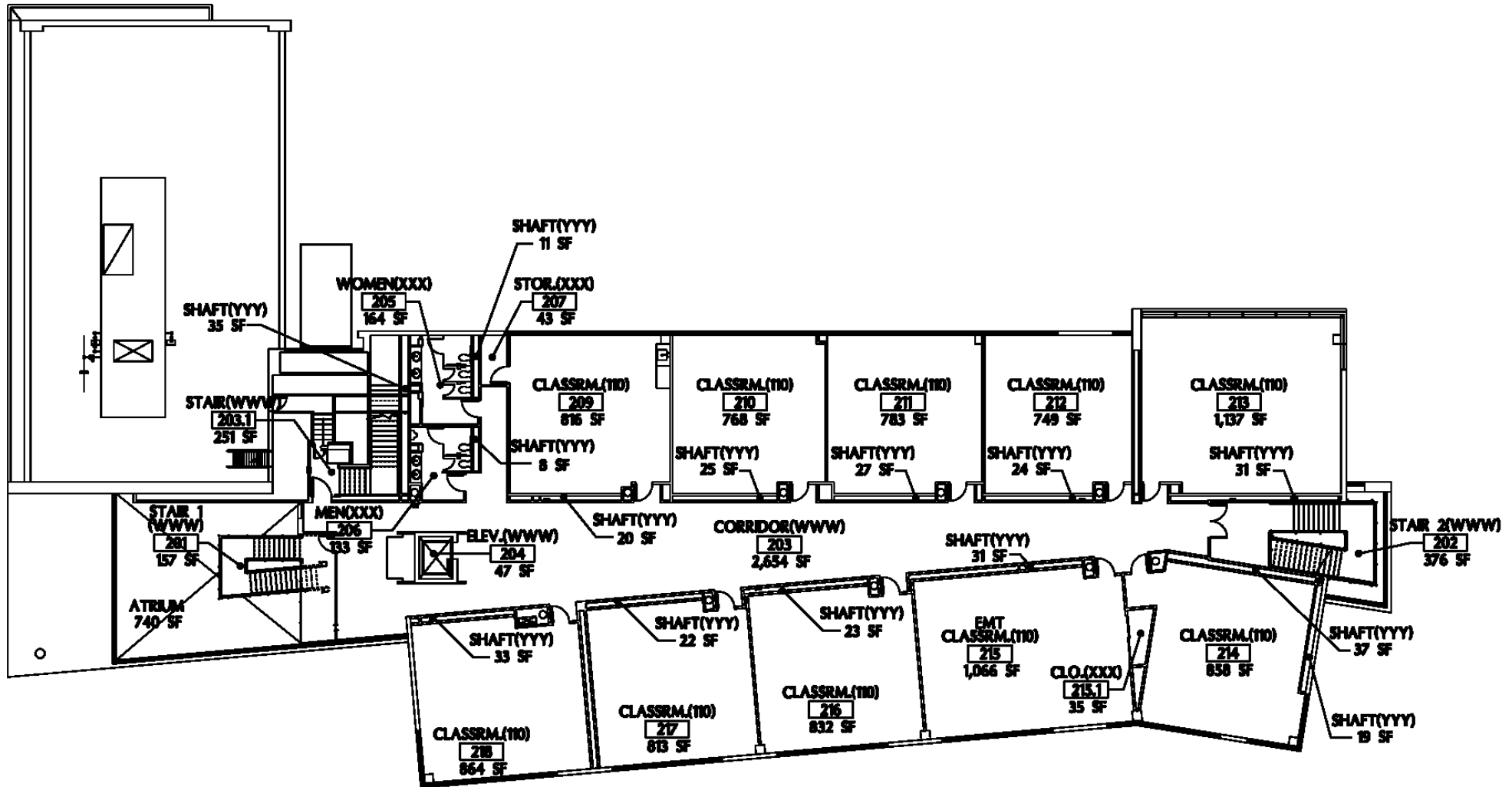












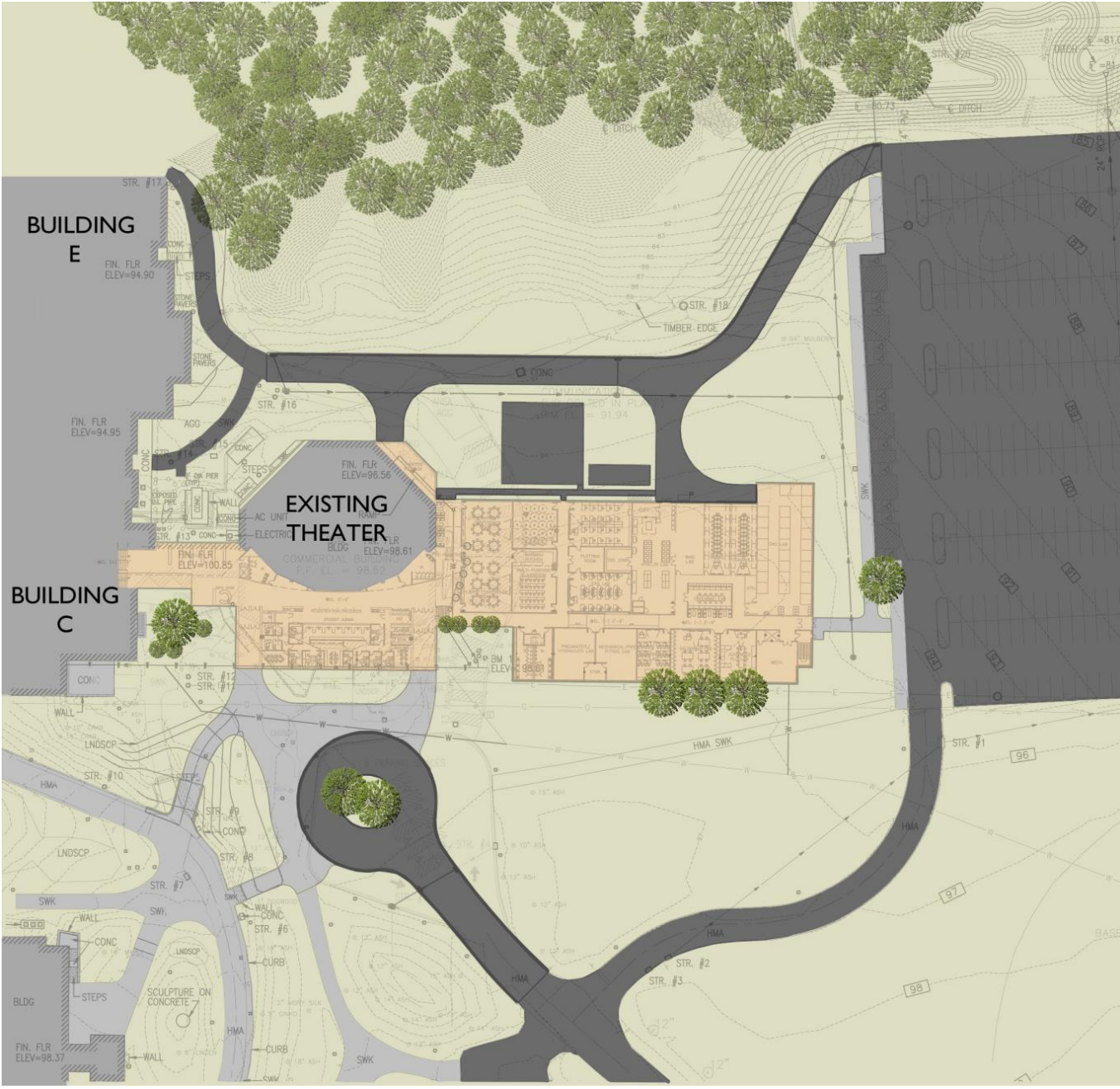


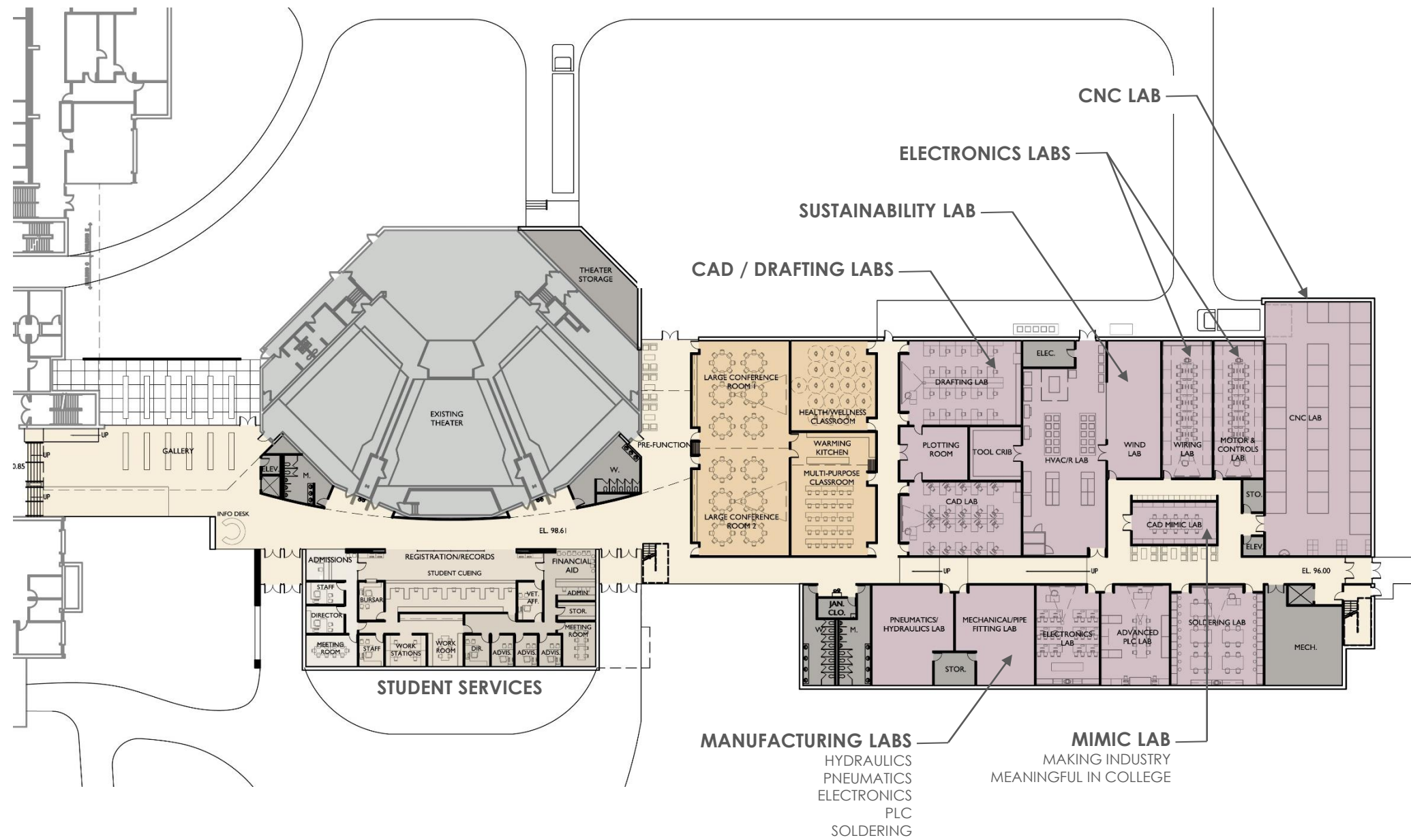




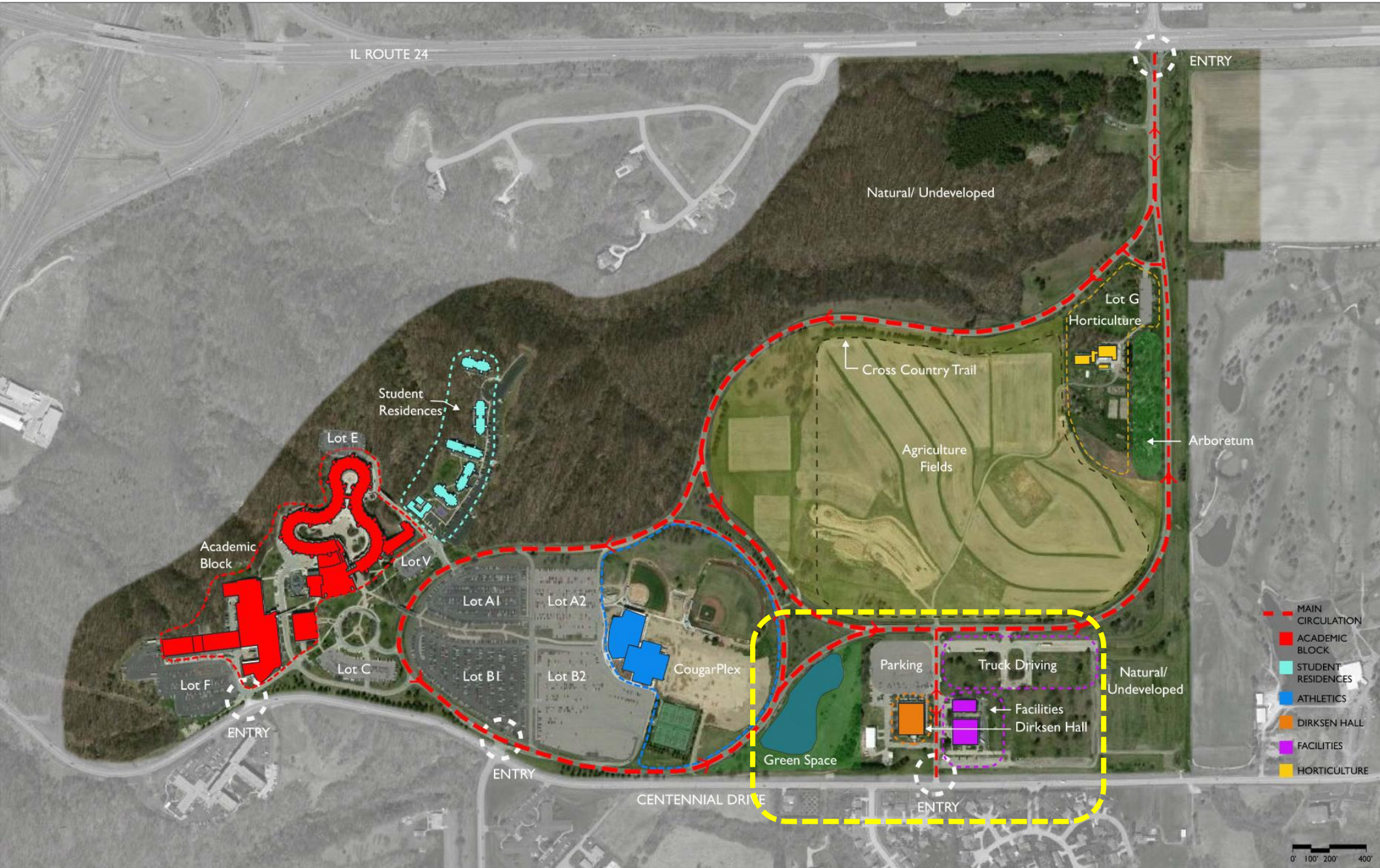


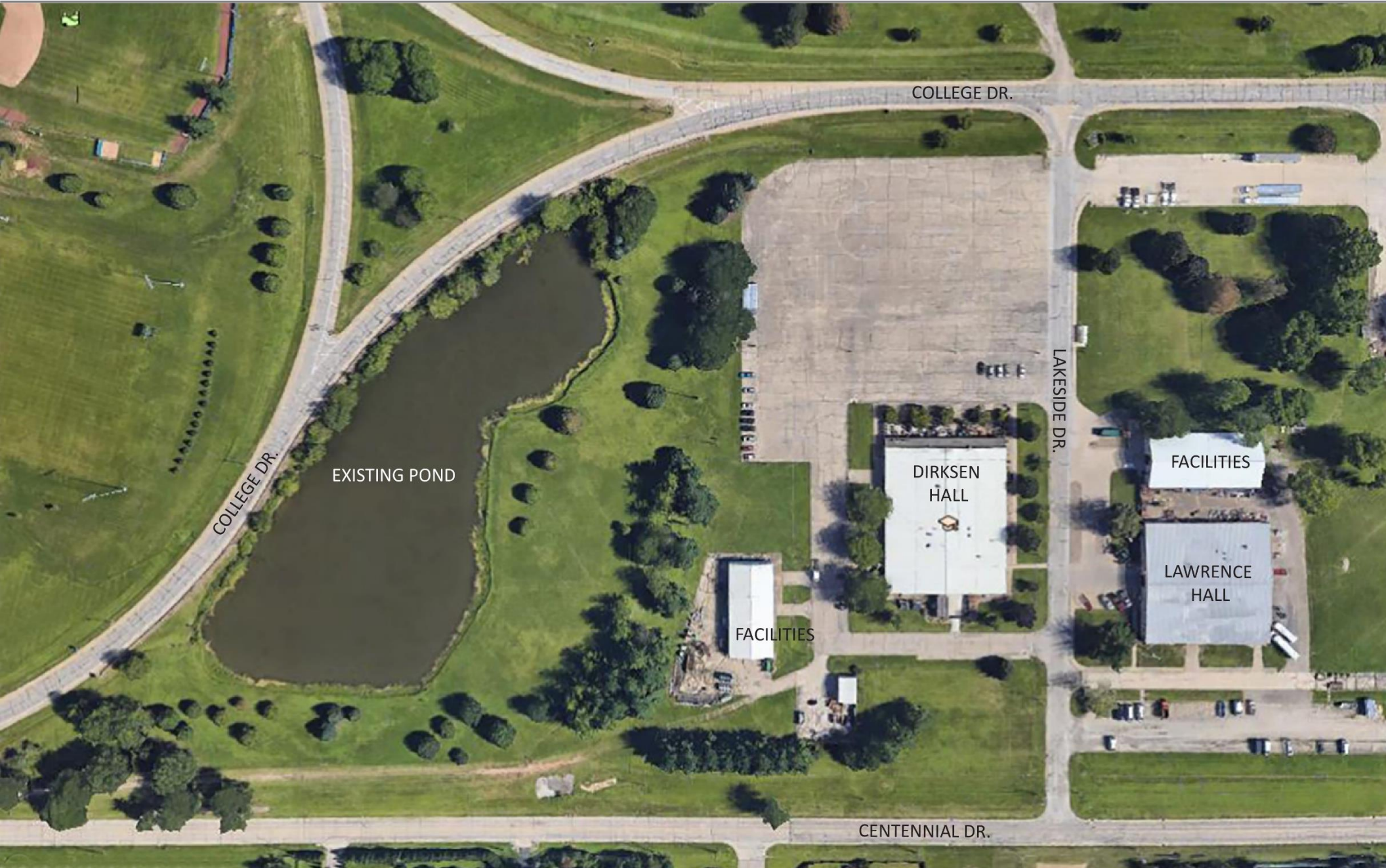




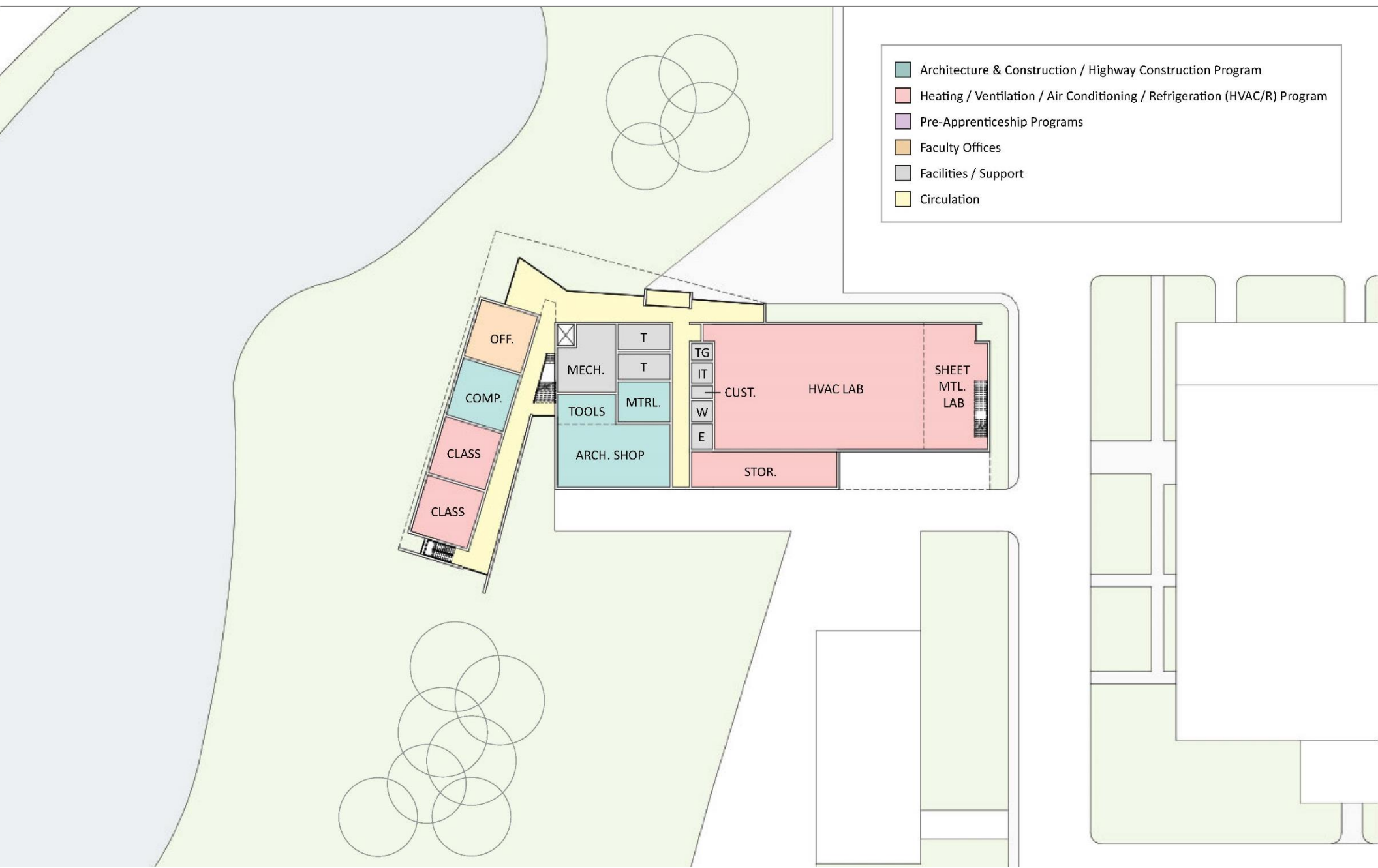




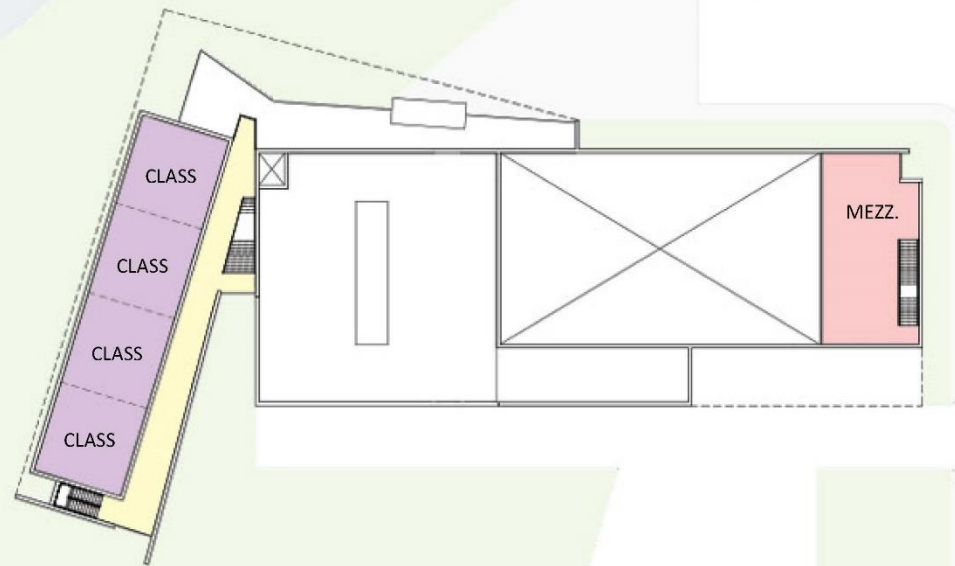


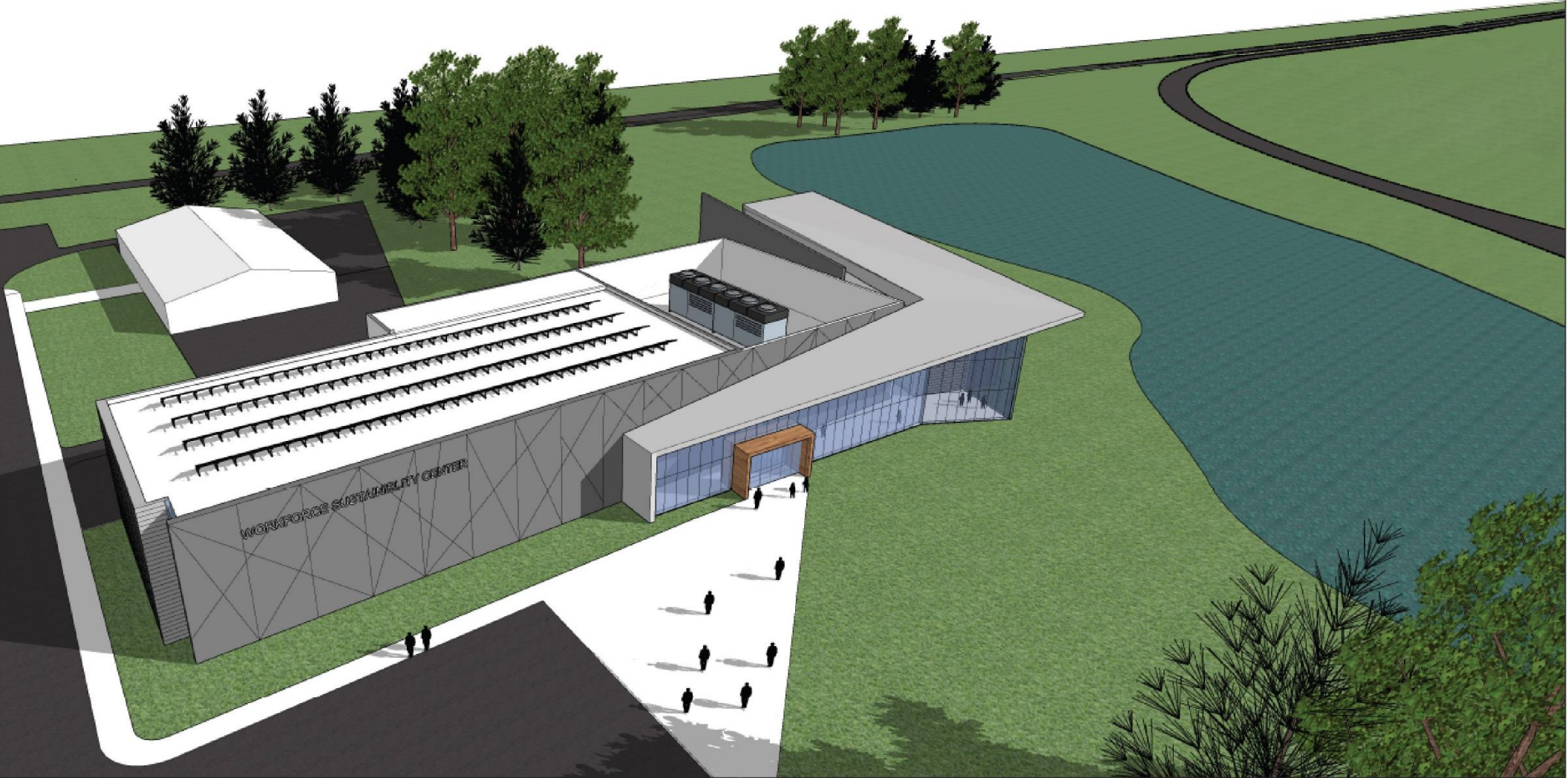


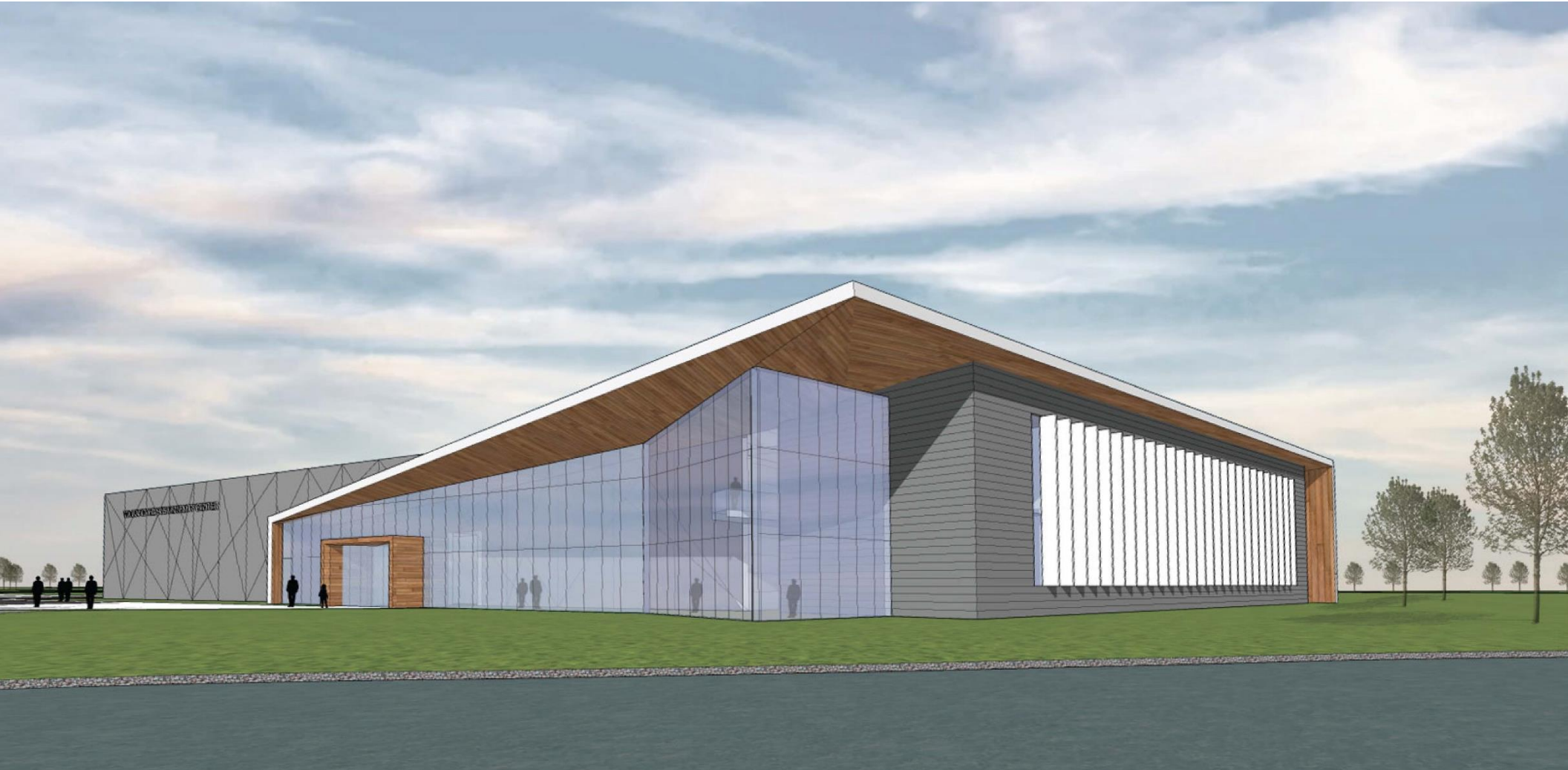


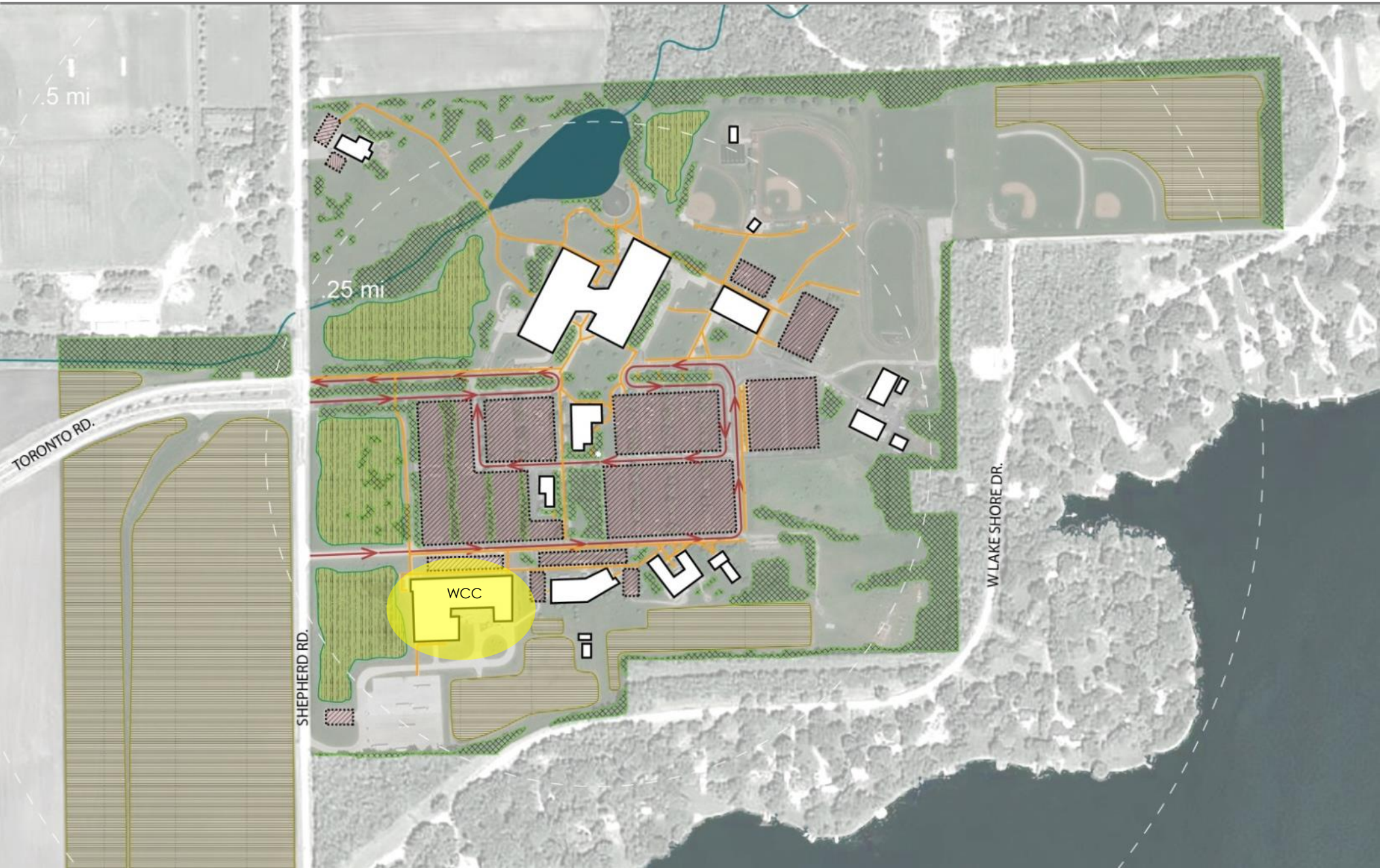


- Architecture & Construction / Highway Construction Program
- Heating / Ventilation / Air Conditioning / Refrigeration (HVAC/R) Program
- Pre-Apprenticeship Programs
- Faculty Offices
- Facilities / Support
- Circulation

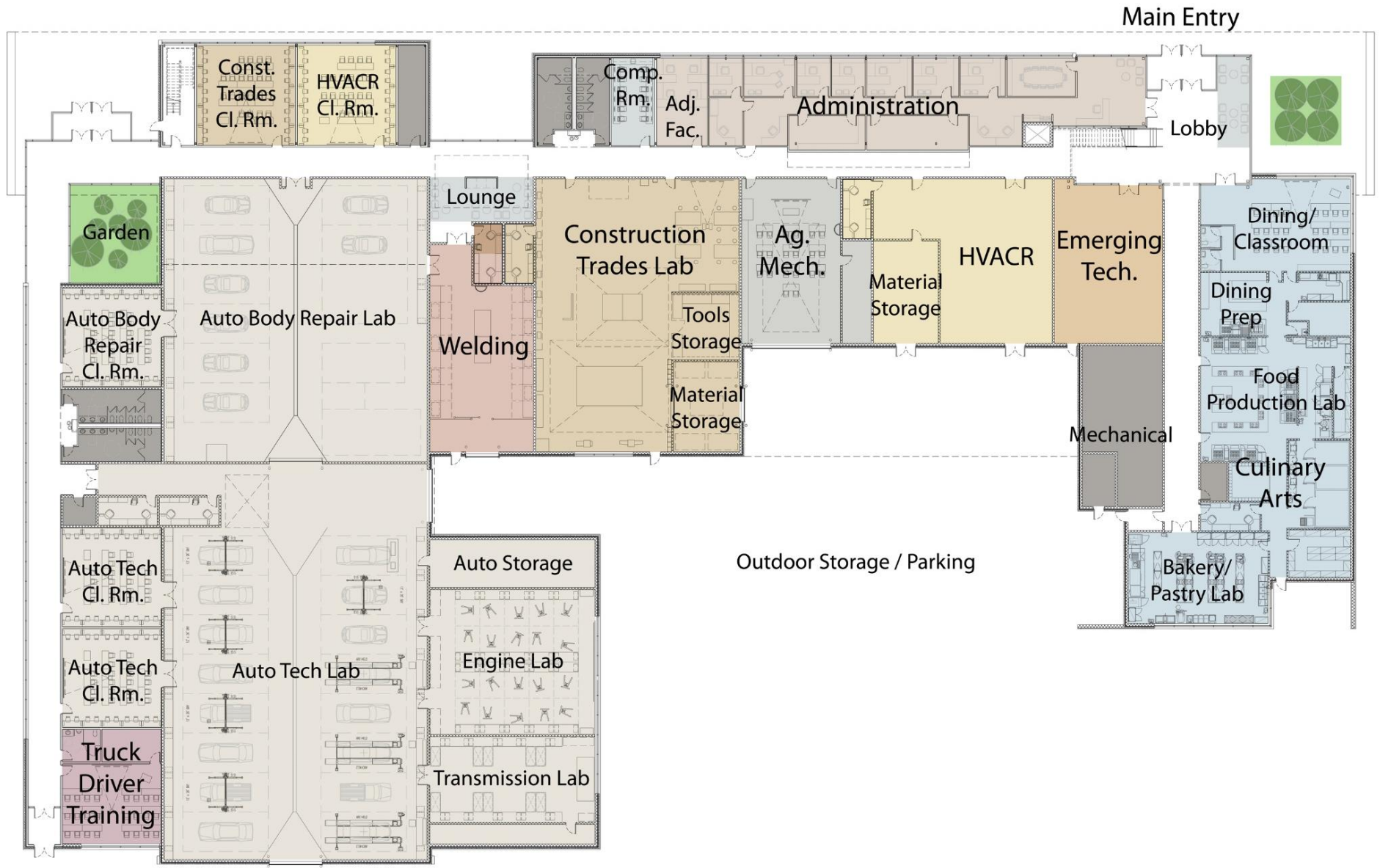


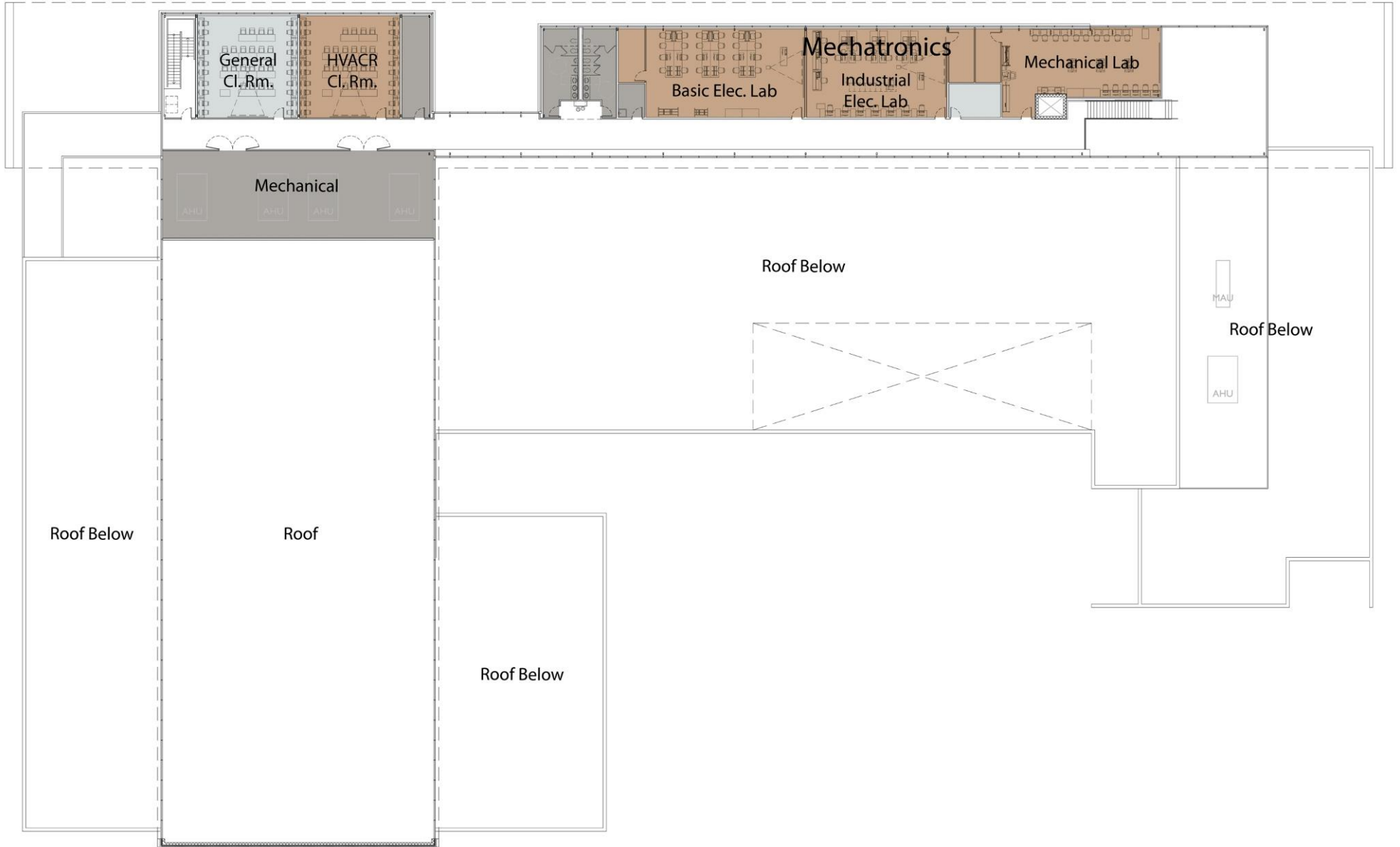




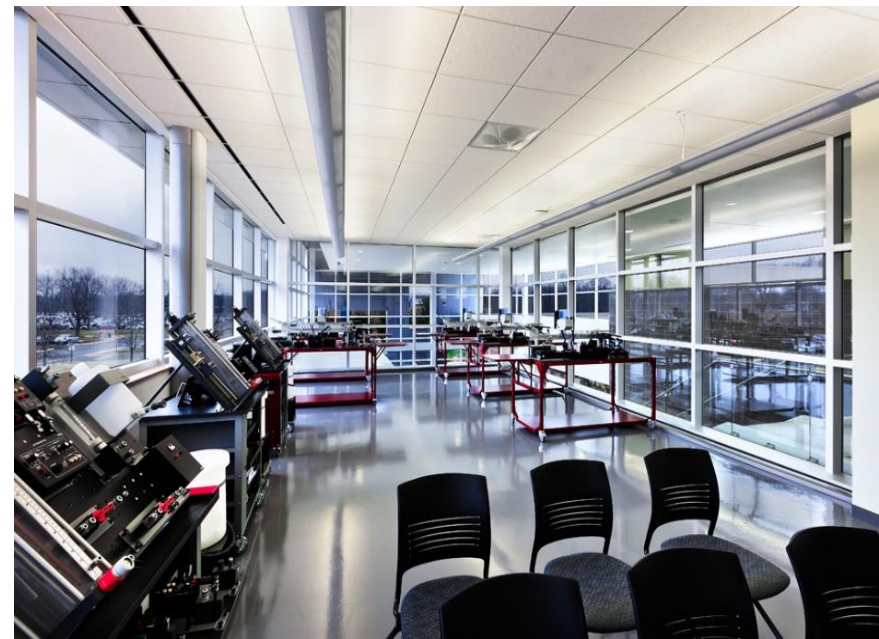
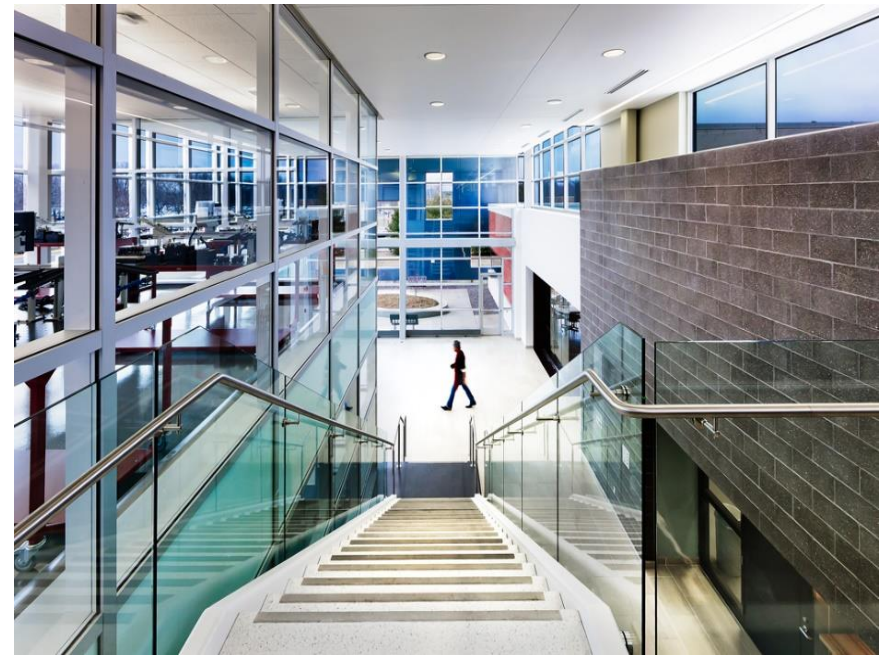


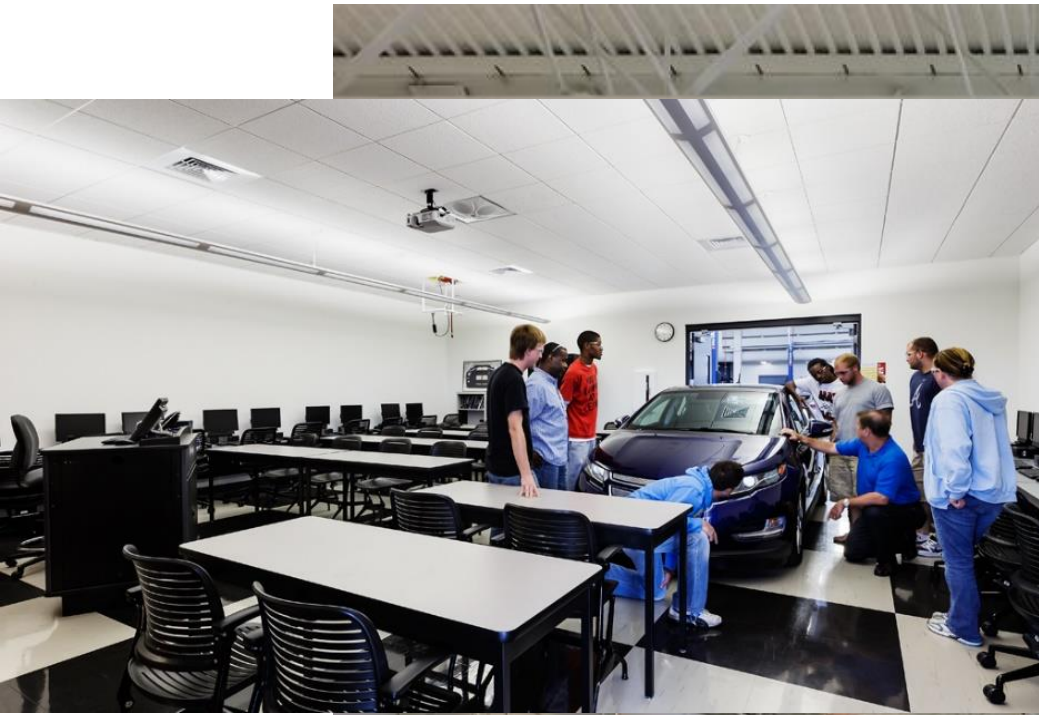






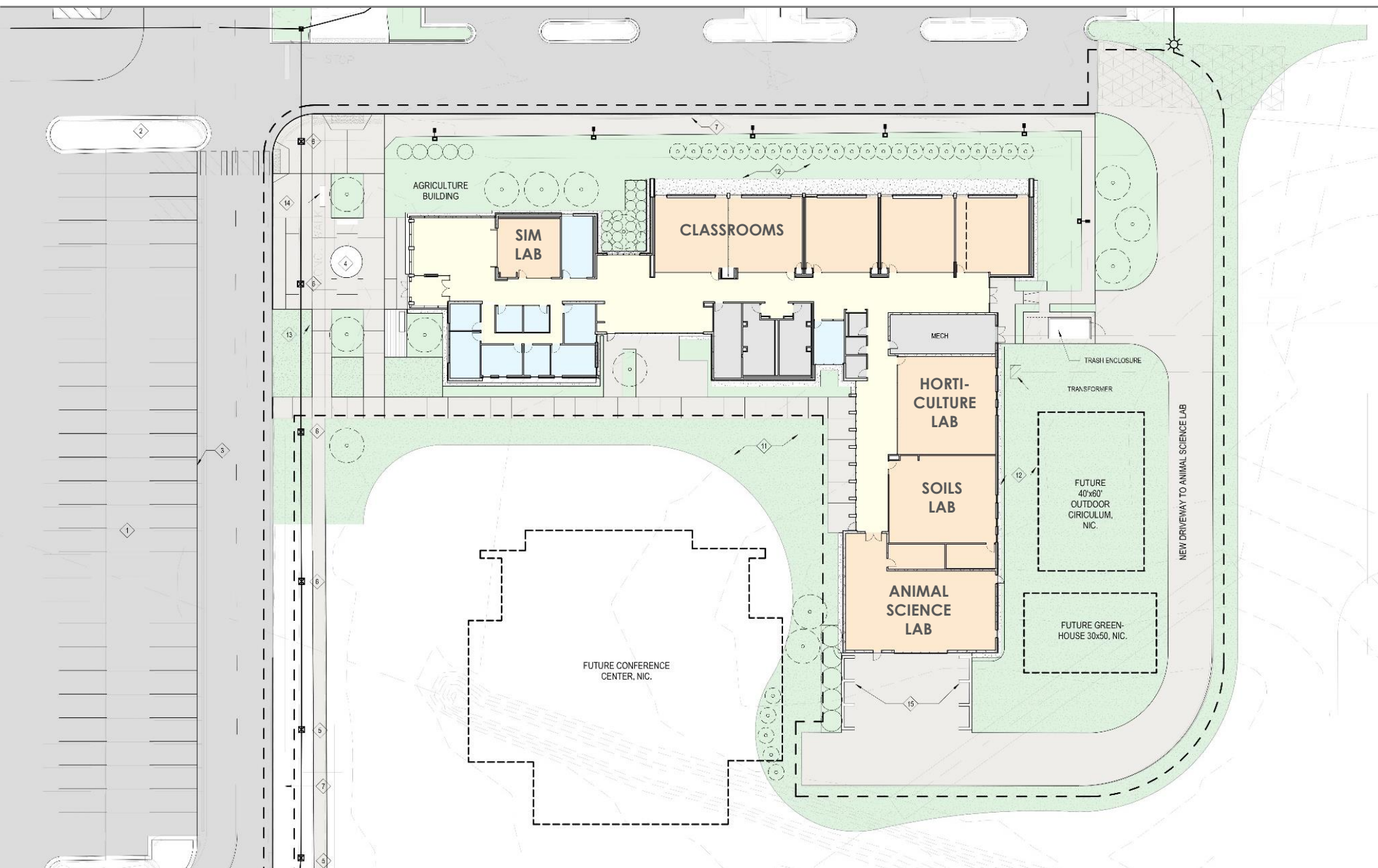
















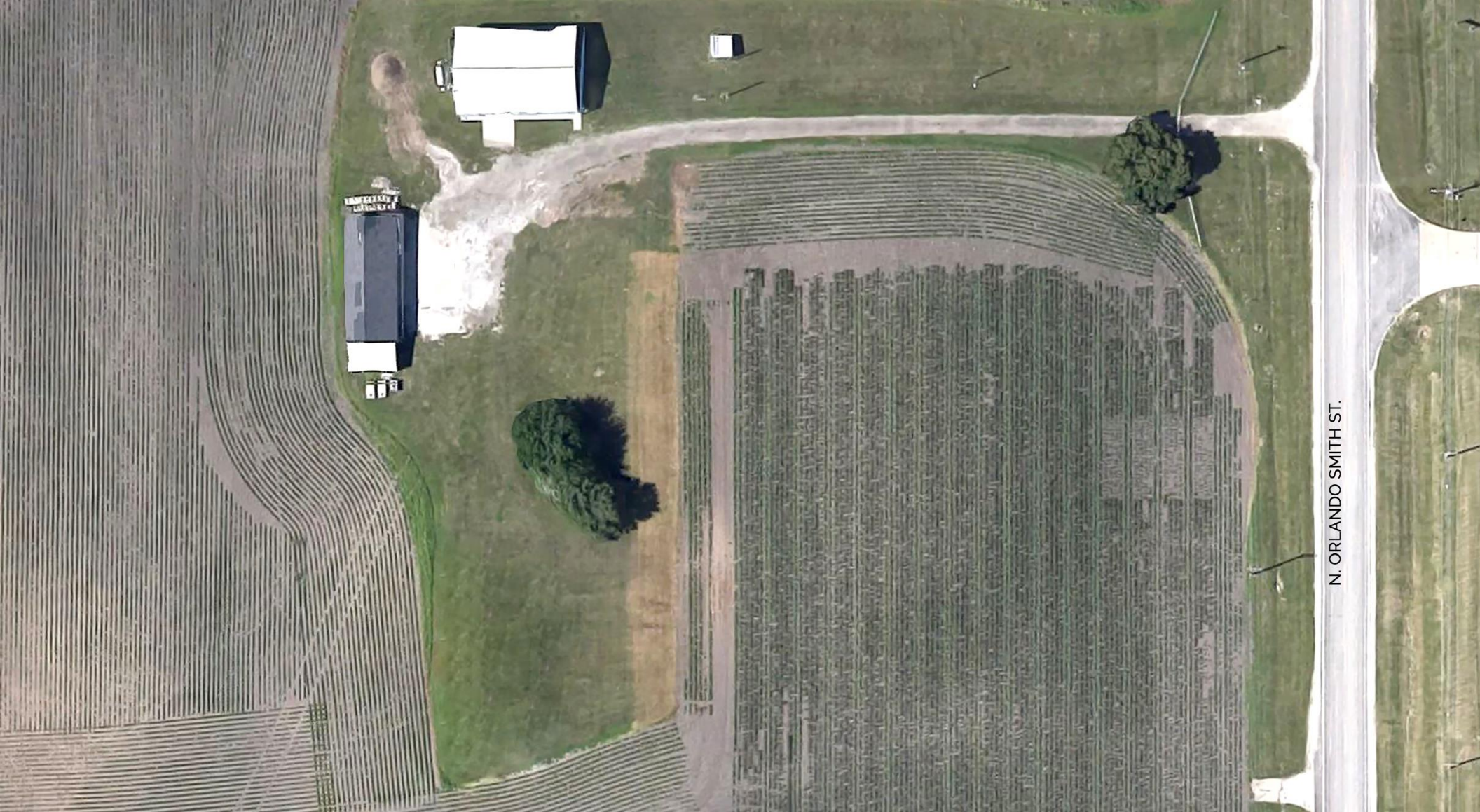




AGRICULTURAL
EDUCATION
CENTER

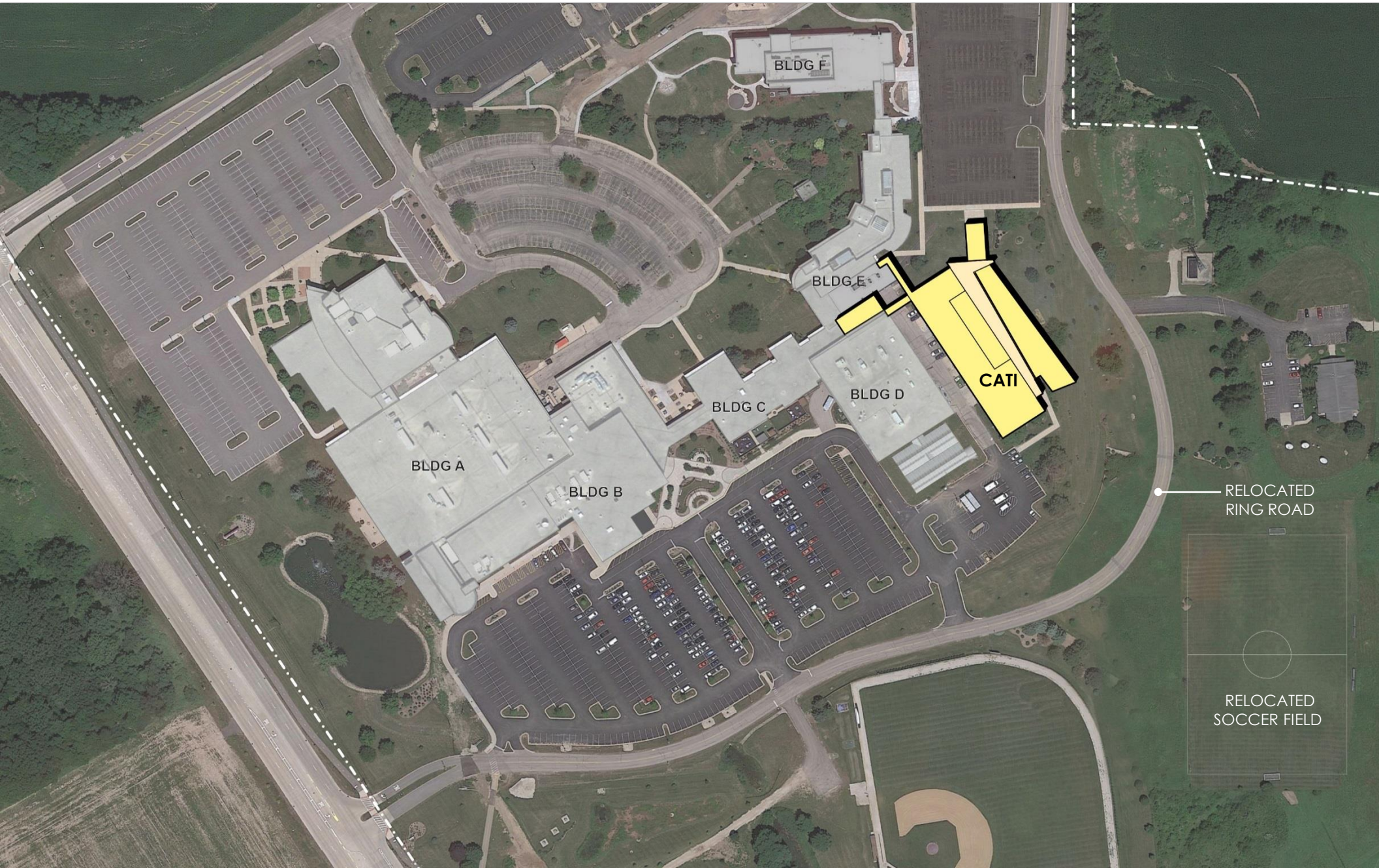
ORLANDO SMITH ROAD



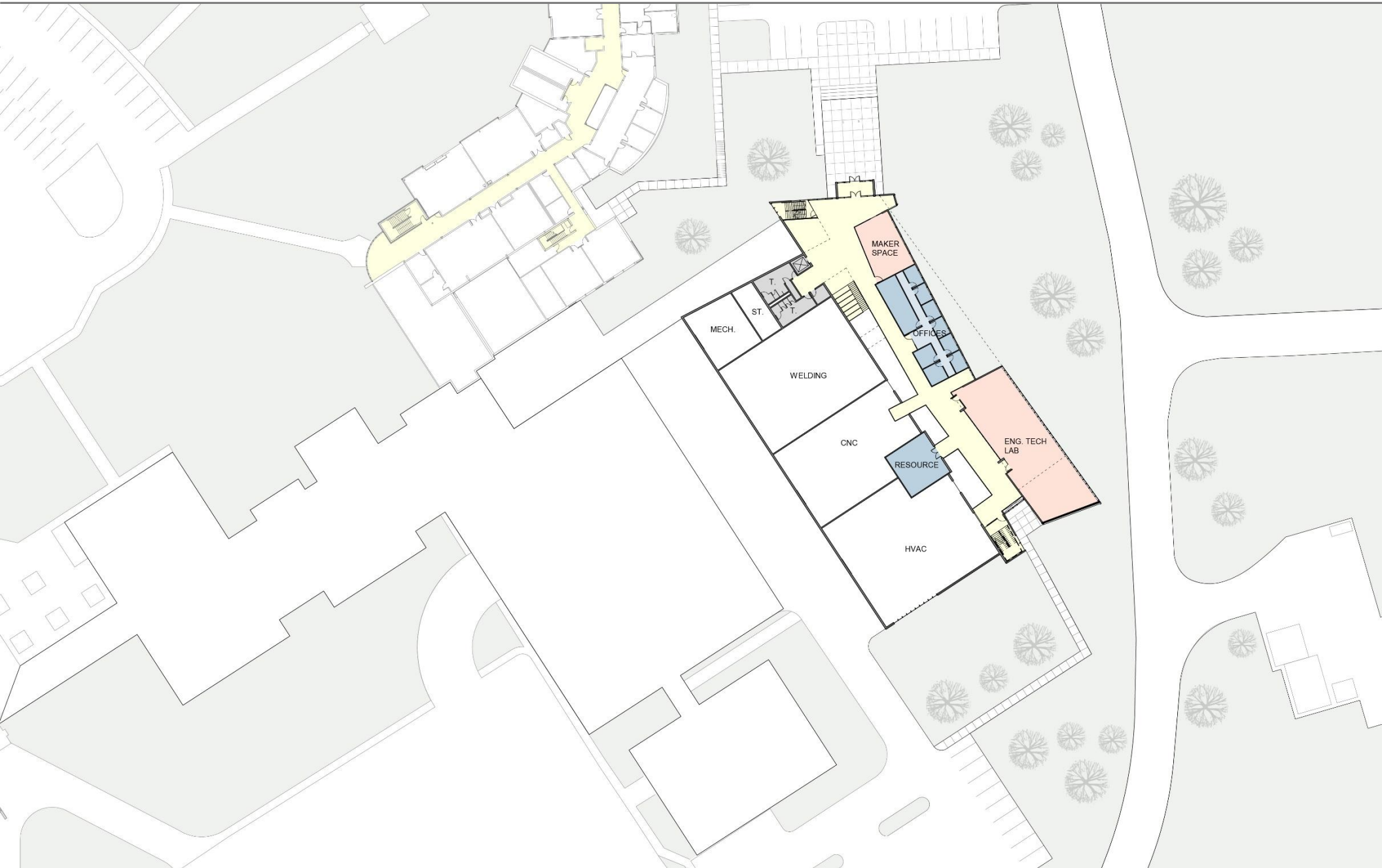


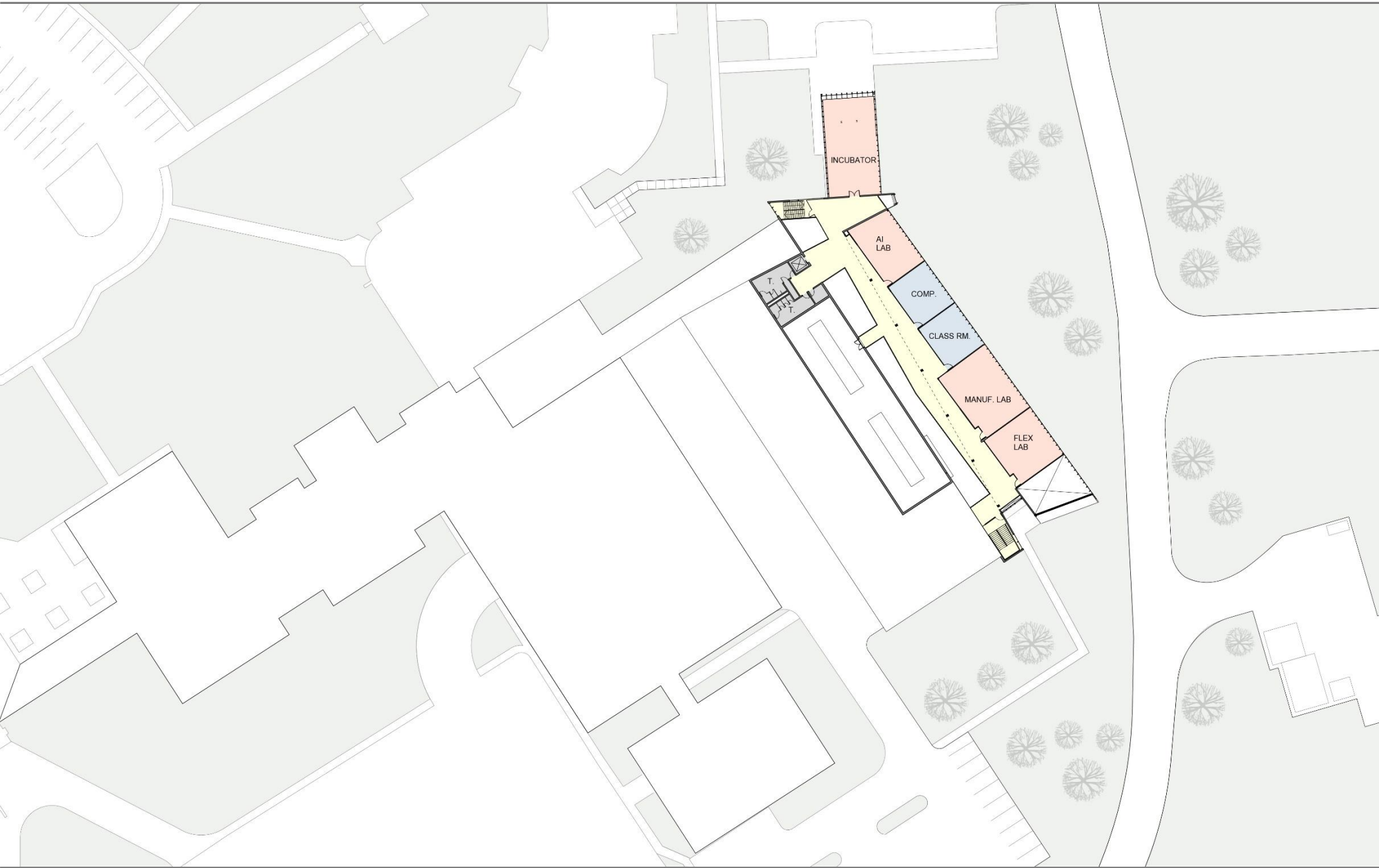


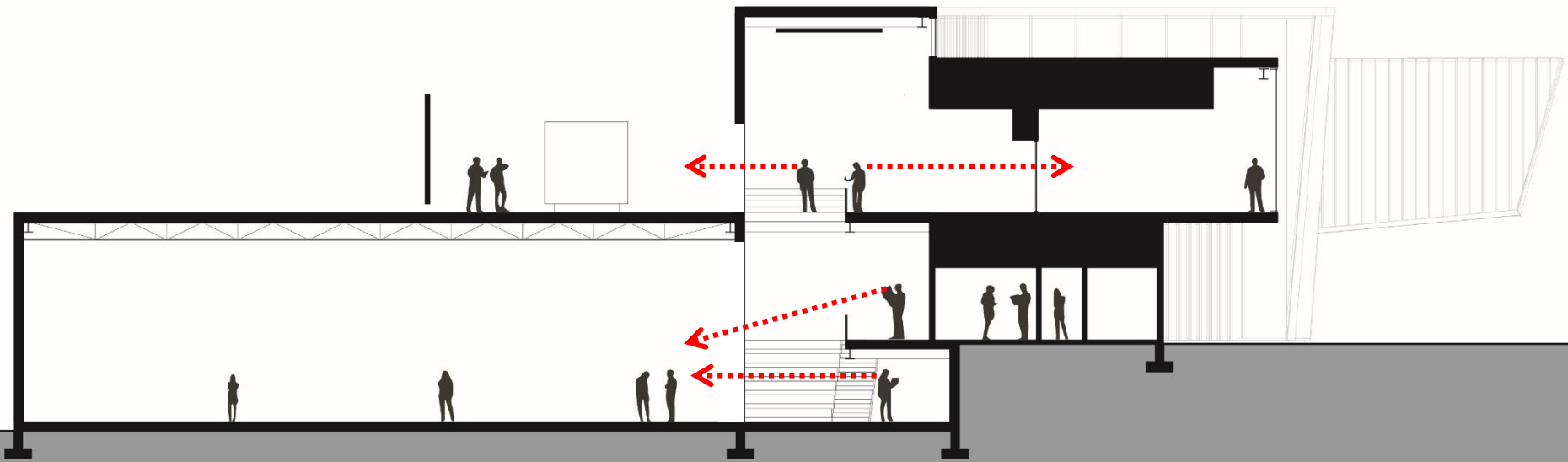
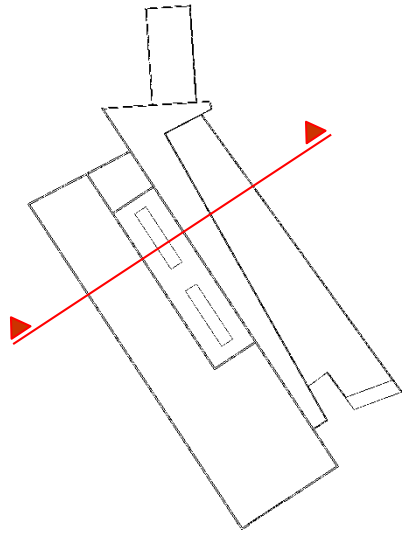


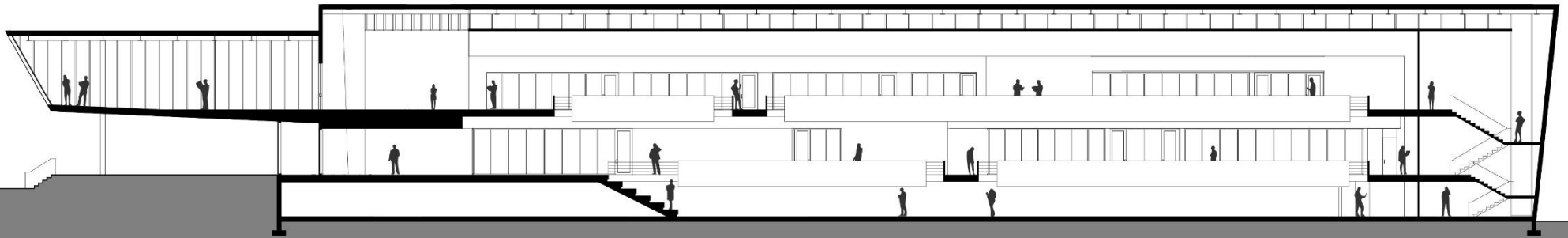
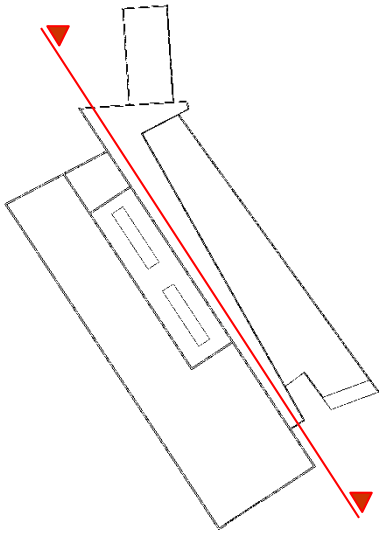


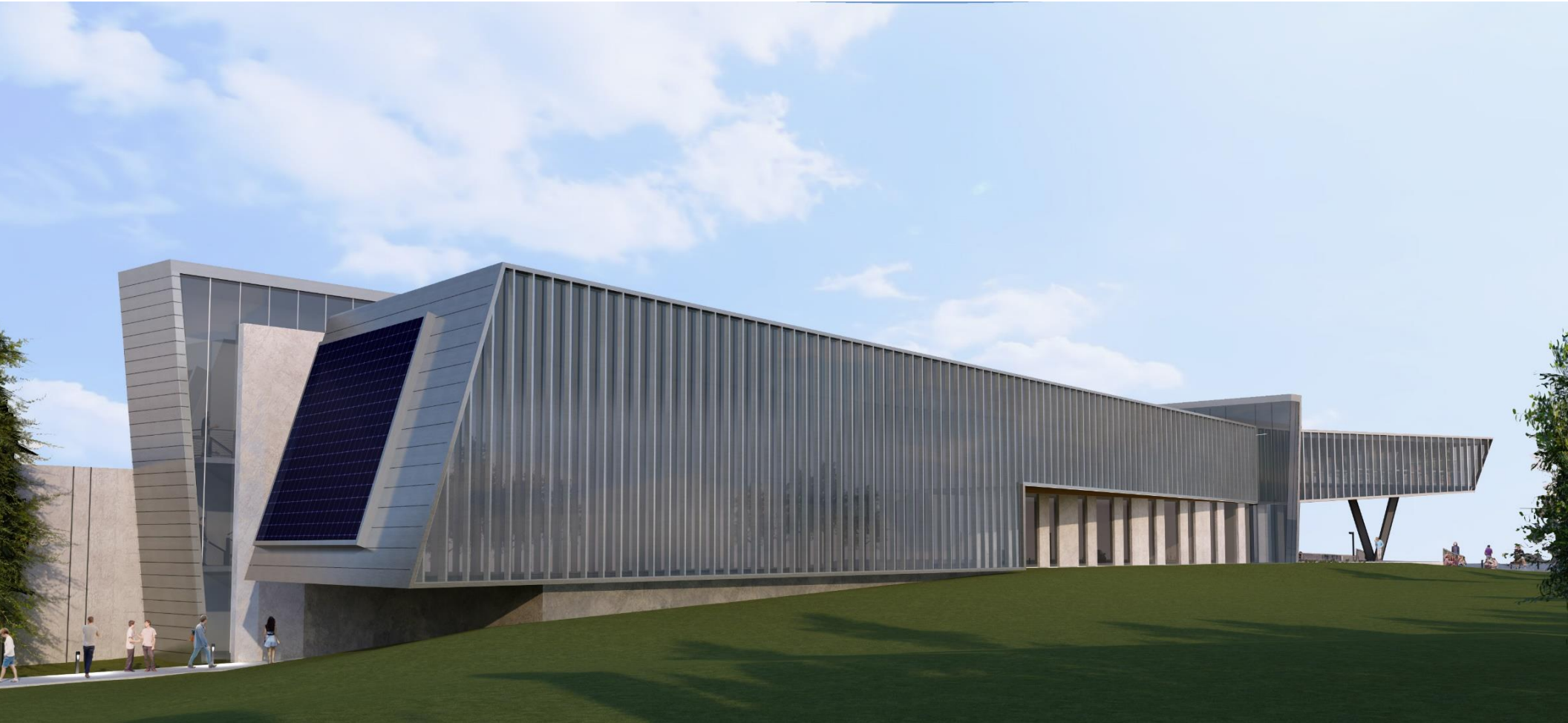


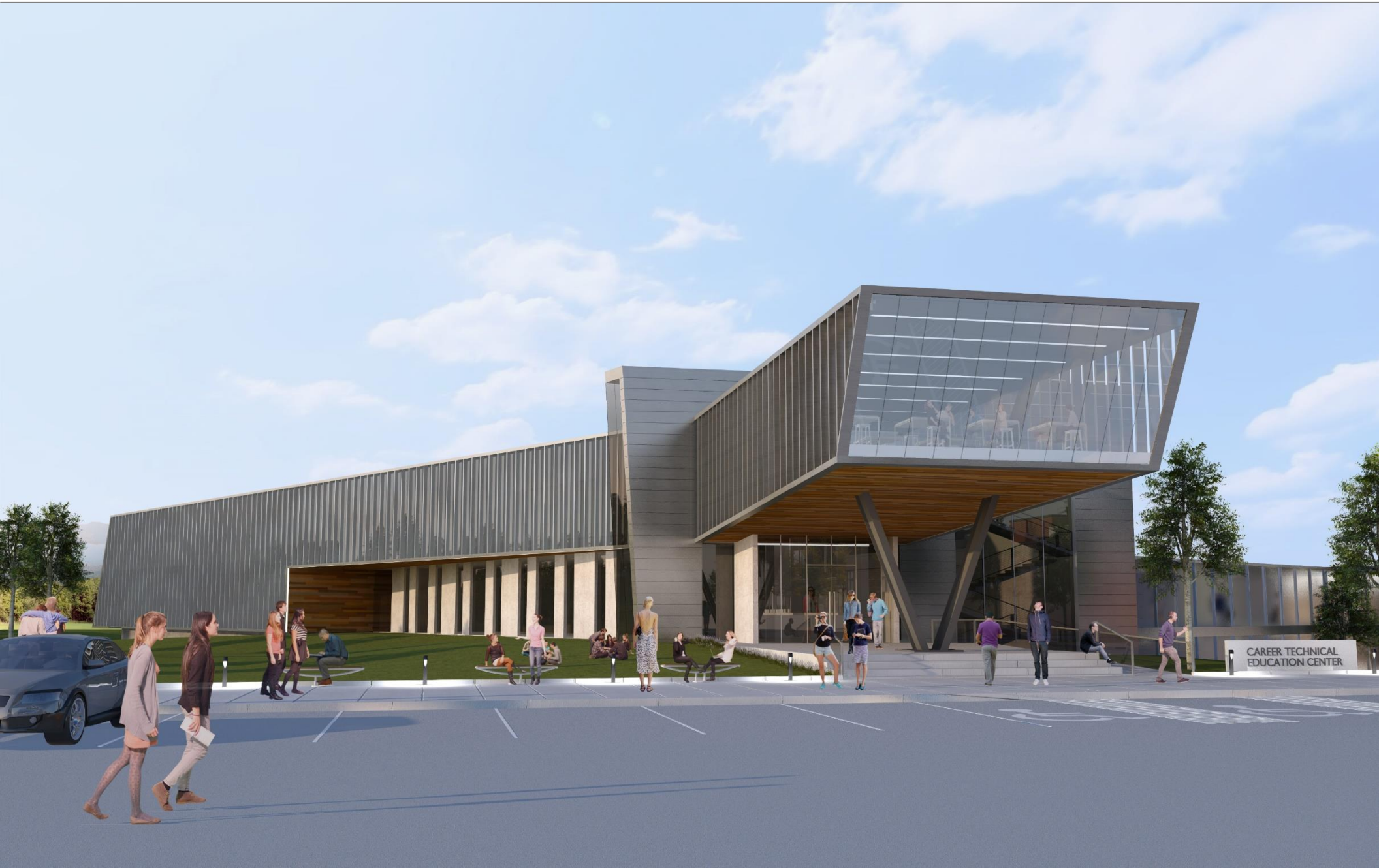






















**THANK YOU...
...QUESTIONS?**



DEMONICA KEMPER ARCHITECTS

**Illinois Community College
Chief Financial Officers**