

# DESIGN FOR CAREER READY EDUCATION

State of Illinois, Capital Development Board  
City Colleges of Chicago, Olive-Harvey College  
**Transportation, Distribution and Logistics (TDL) Center**

Presented by:

David Yandel, AIA, LEED AP  
Carol Stolt, ASID, WELL AP



# FGM ARCHITECTS

- City Colleges of Chicago
- College of DuPage
- Governors State University
- Joliet Junior College
- Kaskaskia College
- Northwestern University
- Shawnee Community College
- Southern Illinois University Carbondale
- Southern Illinois University Edwardsville
- Triton College
- University of Chicago
- University of Illinois at Chicago
- University of Illinois at Urbana-Champaign
- Waubonsee Community College
- Wheaton College



# Design for Career Ready Education

- **What's the problem?**
  - We've made work the enemy.
- **How do we change the prevailing misperception of skilled labor?**
  - Make work cool again!
- **[www.mikeroweworks.org](http://www.mikeroweworks.org)**





# City Colleges of Chicago

- Harold Washington
- Harry S. Truman
- Kennedy King
- Malcom X
- Olive-Harvey
- Richard J. Daley
- Wilbur Wright





# College to Careers (C2C)

- The C2C program forges partnerships between City Colleges and Industry leaders to better align City College's curricula with the demand in growing fields
- Partnerships provide City College students access to real-world experience via teacher-practitioners, internships and top-notch facilities.
- City Colleges' students and graduates have a first pass at job opportunities



# College to Careers (C2C)



ADVANCED  
MANUFACTURING



BUSINESS &  
PROFESSIONAL



CONSTRUCTION  
TECHNOLOGY



CULINARY ARTS &  
HOSPITALITY



EDUCATION



HEALTHCARE



INFORMATION  
TECHNOLOGY



HUMAN  
SCIENCES



NATURAL  
SCIENCES



TRANSPORTATION,  
DISTRIBUTION &  
LOGISTICS

# Transportation Distribution and Logistics Forecast

- 70% of the nations freight tonnage is moved by truck
- Illinois and the nation is experiencing a truck driver shortage

*“Chicago is a juggernaut for transportation, distribution and logistics, and the new Olive-Harvey will help ensure that Chicago’s students are prepared for the thousands of jobs and opportunities in this rapidly growing field.”*

- Mayor Rahm Emanuel





# Partners

## Industry Partners



## Academic Partners



# TDL at Olive-Harvey

- High-Tech Central Store Warehouse
- Third-Party Logistics Room
- Eight Automotive and Diesel Engine Technical Labs
- Engine Dynamometer
- Two Simulated Driving Facilities
- Testing Areas and Vehicle Bays for various technology programs
- Nine Classrooms
- Café and Commons



# Transportation Distribution and Logistics Career Paths

- Supply Chain Management
- Logistics
- Commercial Driving
- Forklift Operation
- Automotive, Diesel and Aviation Maintenance



# SIU Carbondale – TEC Center



Education Building: 189,000 SF

Construction Budget: \$61.1M

Completion: Fall 2012

Comprising three buildings, the TEC design was developed to showcase an active teaching environment and to incorporate long-term flexibility – accommodating the inevitable changes in technology and best practices.

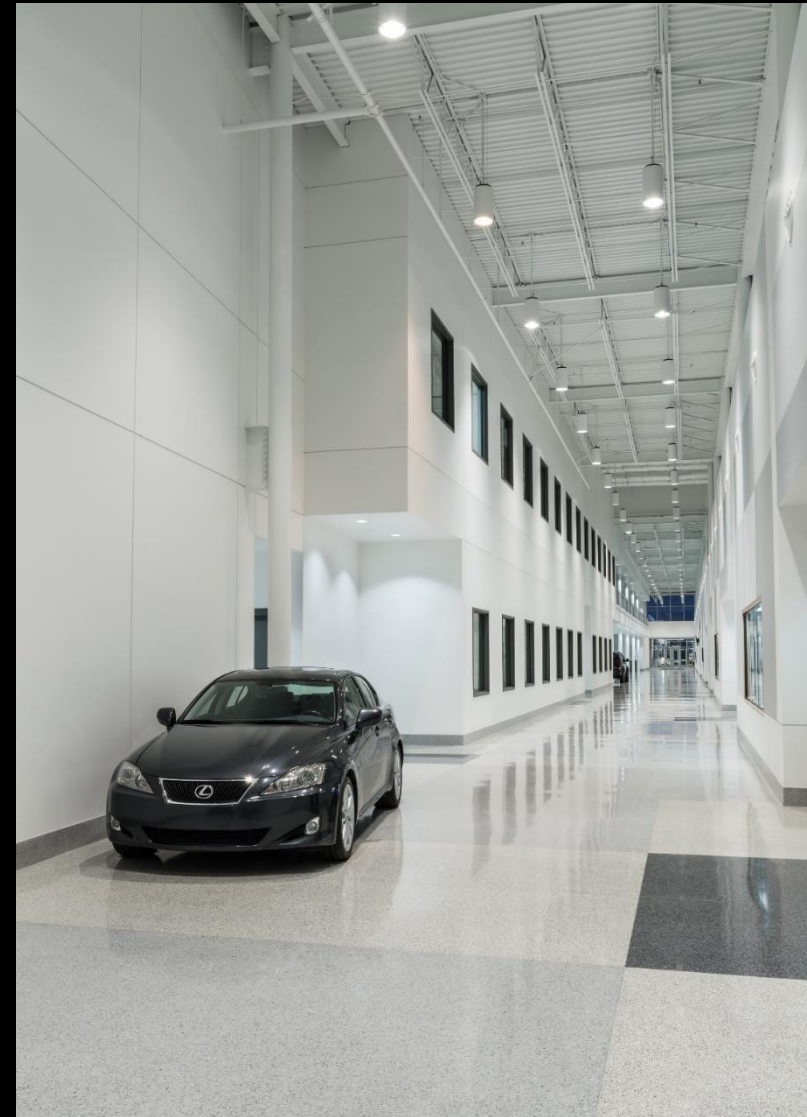
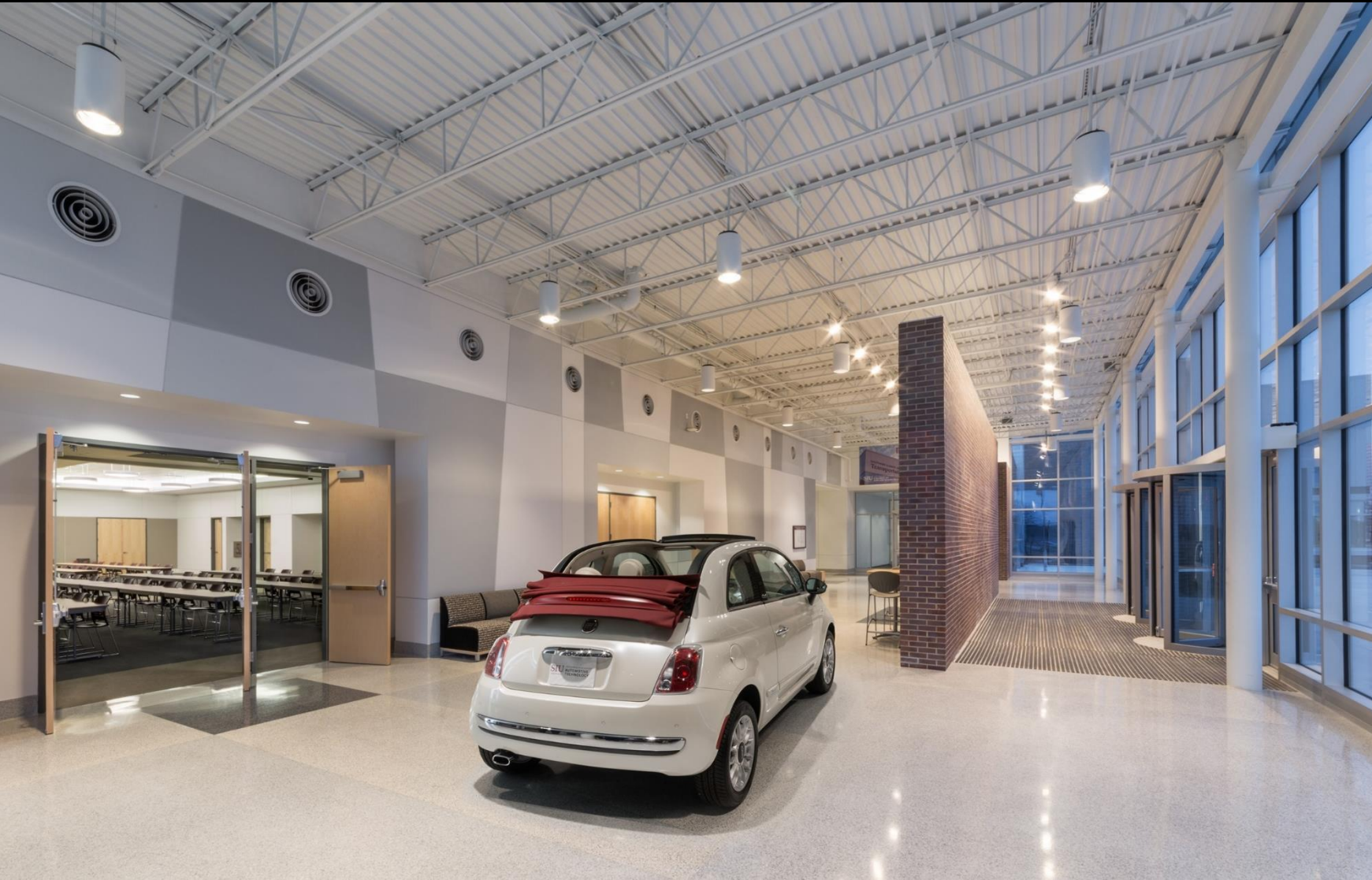
In addition to classrooms and offices, it features demonstration labs, multiple dynamometers, flight and ATC simulator rooms, automotive service bays, a conference center and a multi-purpose space that can accommodate 800.

An 11,000 square foot aviation test cell building houses intensive research and diagnostics on various aircraft engines.

The third building houses the department's fleet of 90 training vehicles and provides fueling stations and additional storage.



# SIU Carbondale – TEC Center





# SIU Carbondale – TEC Center





# Design Overview





# Olive-Harvey College





# Sustainability Initiatives

## Sustainable Site:

- Reuse Previously Impacted Site
- Public Transportation Access
- Maximizing Open Space – 185 New Trees

## Energy and Atmosphere:

- Highly Efficient Building Envelope
- Highly Efficient HVAC Systems
- Enhanced Commissioning
- Transpired Solar Collector

## Water Efficiency:

- Native and Adaptive Plantings
- Reducing Water Usage by 35%
- Rain Gardens and Bio Swales

## Materials and Resources:

- Construction Waste Management
- 20% Recycled Content for New Materials
- 20% Regional Materials
- Certified Wood Products

## Indoor Environmental Quality:

- Quality Interior Materials
- Low VOC Coatings





# Interior Design

- Reflect the Transportation Industry
- High Energy Space
- High Tech Environment
- Brand Reinforcement
- Sense of Movement
- Campus Context



# Design Concept

movement



gather



inquire



engage



brand reinforcement

sense of movement

campus context



# Universal Design

## Equitable Use

- No Step Entries
- Unassisted views outside

## Flexible Use

- Non-handed Workbenches
- Movable Furniture Solutions

## Perceptible Information

- Essential information is provided in a variety of modes
- Color coded paths for building navigation



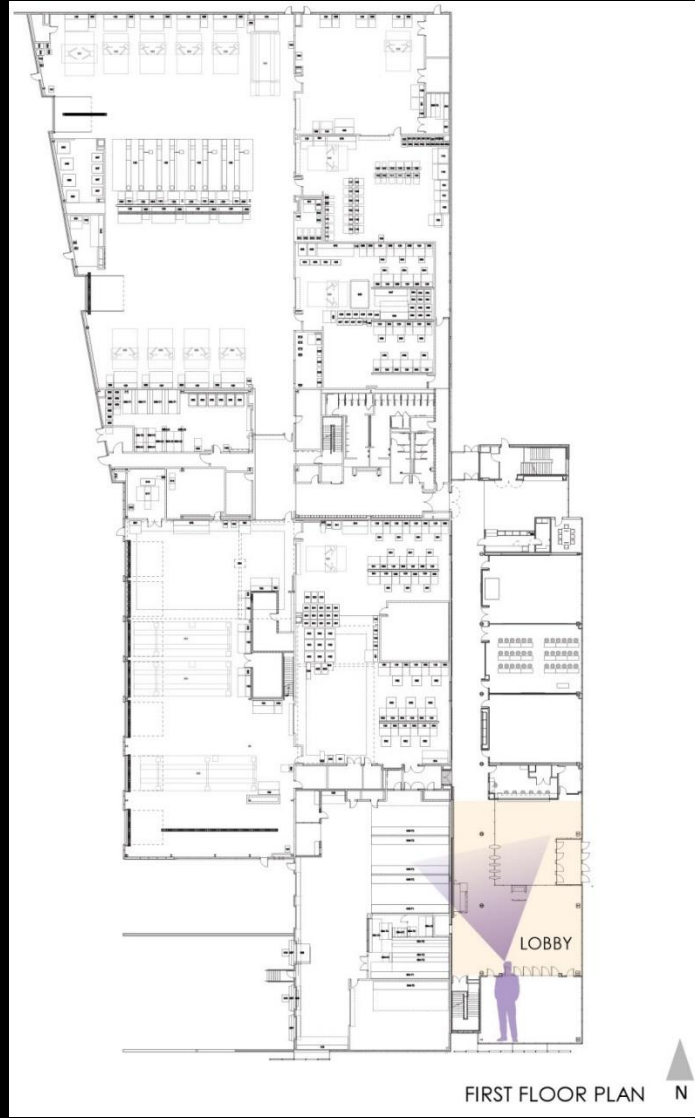


# Program Overview





# Main Concourse

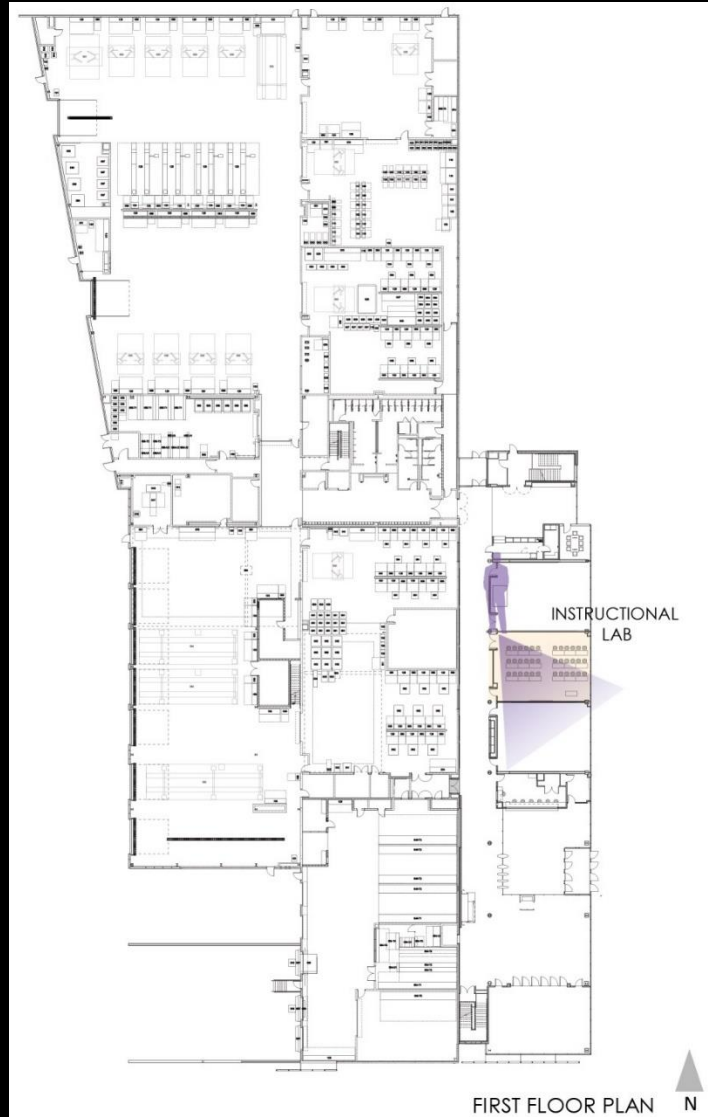


# Main Concourse





# Instructional Labs





# Instructional Labs

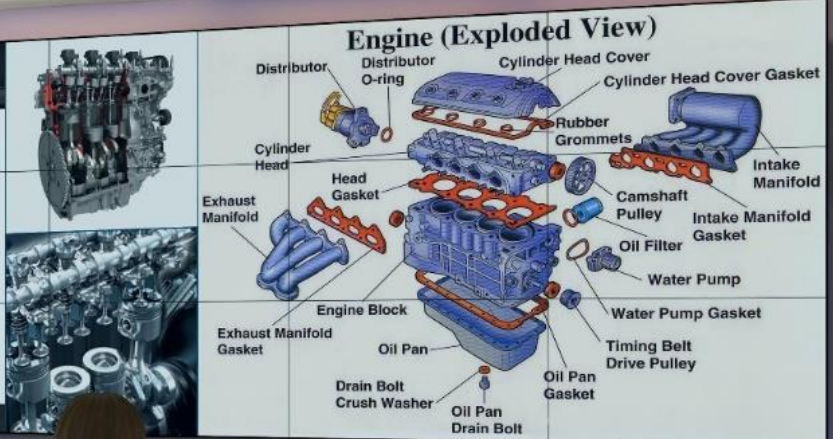


**Diesel PRO POWER**  
24 HR WORLDWIDE SHIPPING  
1-888-433-4735  
305-645-5589

Detroit Diesel Engine Parts & Cummins Engine Parts

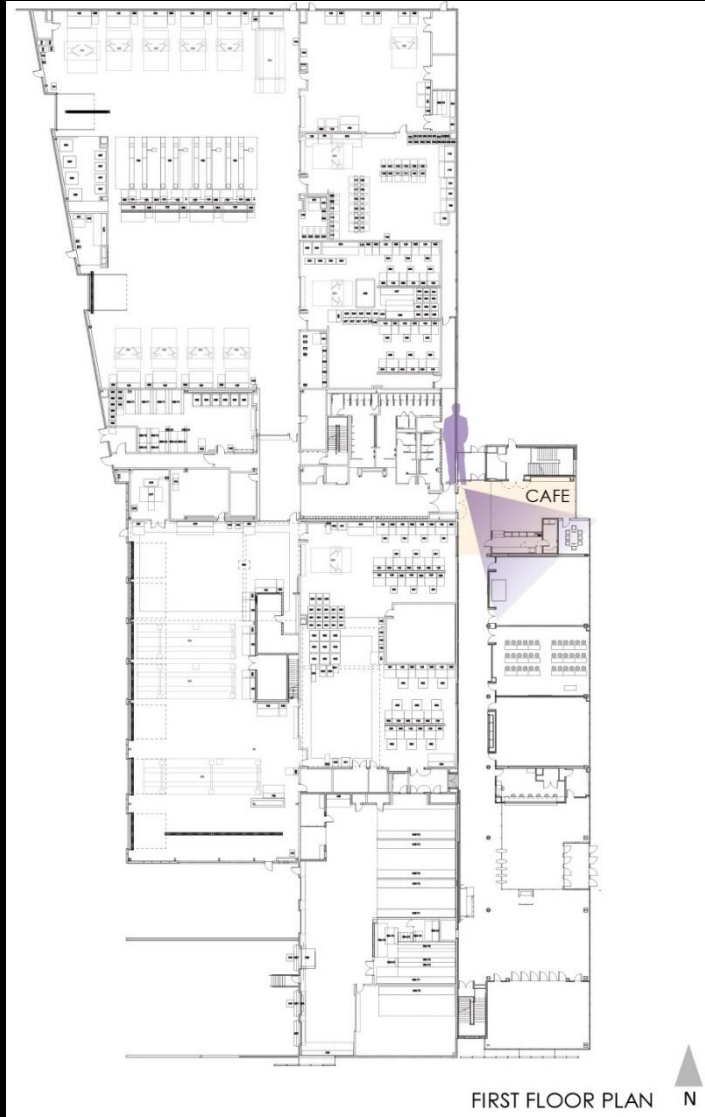
Detroit Diesel Cummins

Twin Disc Gauges Marine Pumps Marine Parts





# Café



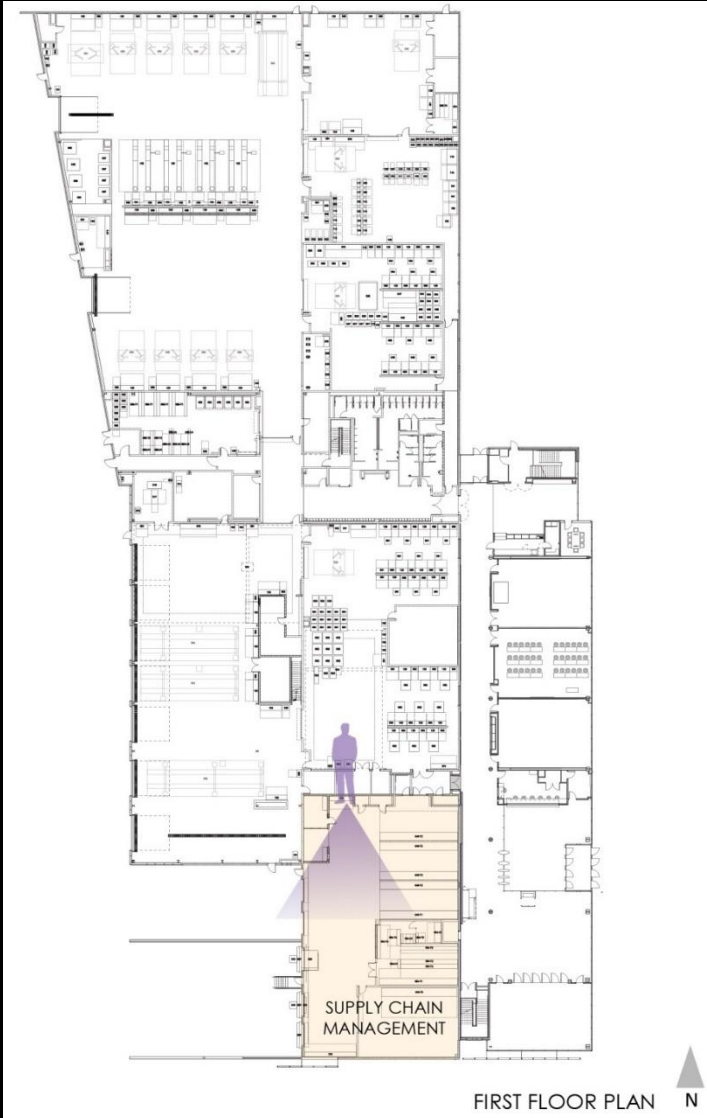


# Café





# Supply Chain Management



# Supply Chain Management





# Diesel Lab



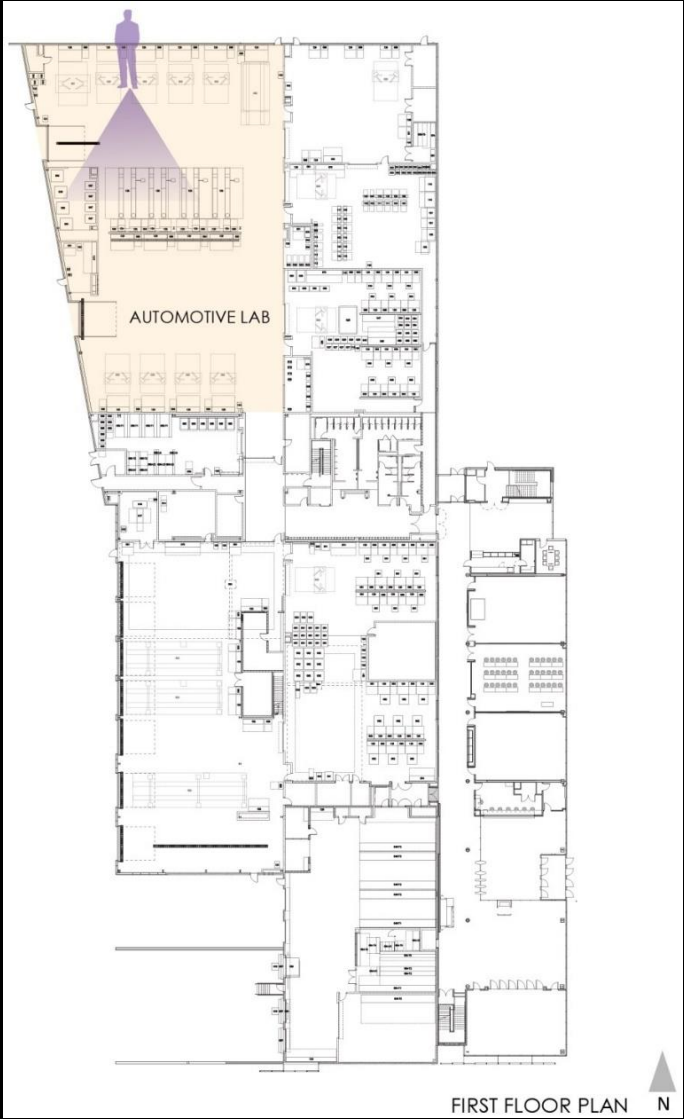


# Diesel Lab





# Automotive Lab



# Automotive Lab





# Project Milestones

10/28/13 – Groundbreaking

6/30/15 – Construction Halted

11/28/17 – Construction Restarted

3/25/19 – Ribbon Cutting



**Questions?**