



CREATING A LEARNING ENVIRONMENT

...that inspires curiosity

Illinois Community College
Chief Financial Officers

October 18, 2018



DEMONICA KEMPER ARCHITECTS

Reclaiming the American Dream

Community Colleges and the Nation's Future

Recommendations for Reimagining the Community College: **The Three R's**

- **Redesign** Students' Educational Experiences
- **Reinvent** Institutional Roles
- **Reset** the System

A Report from the 21st Century Commission on the Future of Community Colleges



DEMONICA KEMPER ARCHITECTS

*Illinois Community College
Chief Financial Officers*

The Commission believes that community colleges must change their institutional characteristics as follows:

From a focus on **student access** to a focus on
access and **student success.**

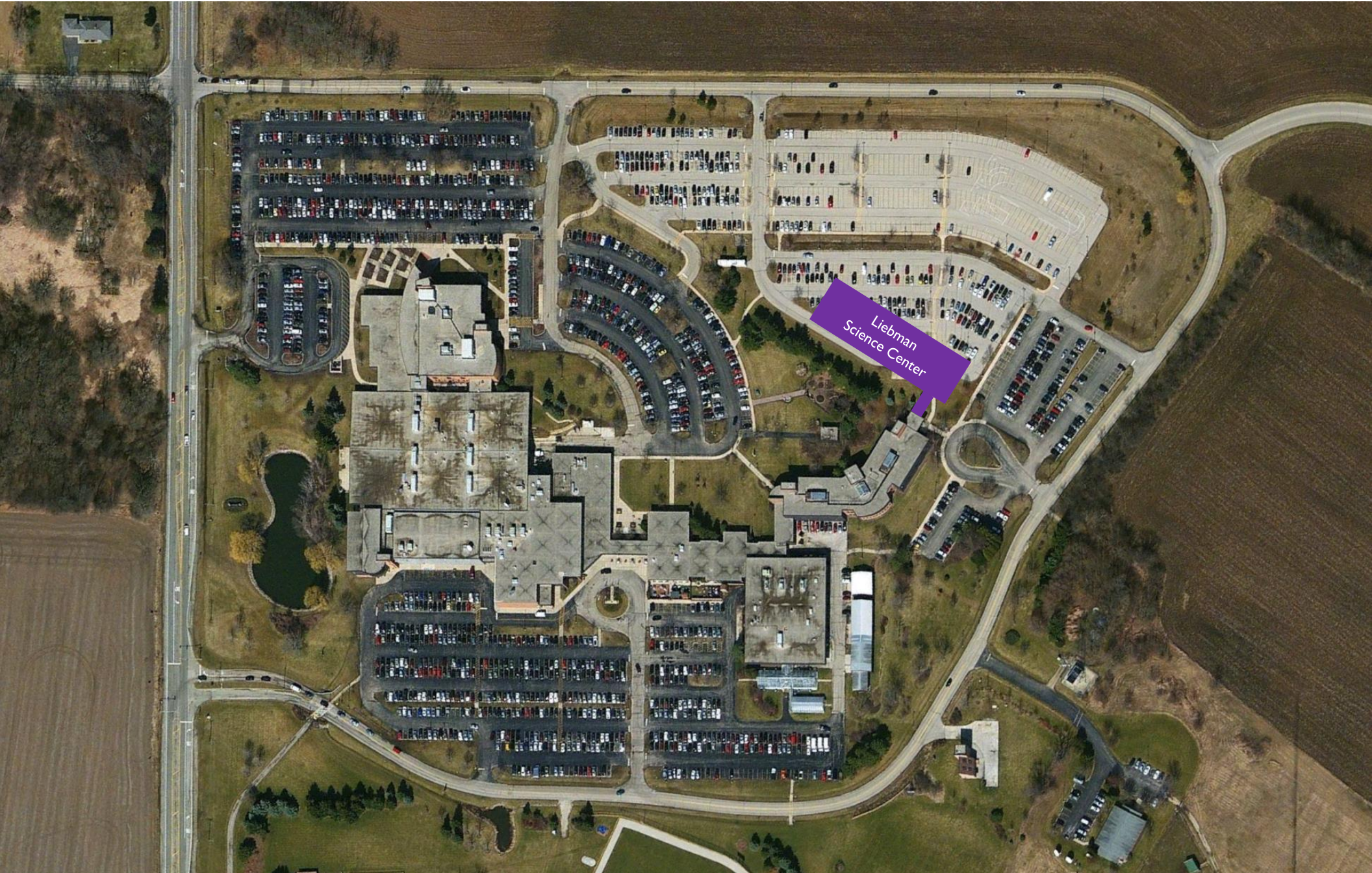
From **low rates** of student success to **high rates** of student success.

From **individual** faculty prerogative to
collective responsibility for student success.

From a culture of **isolation** to a culture of **collaboration.**

From a focus on **teaching** to a focus on **learning.**































30 Doradus / Tarantula Nebula

2 to 25 million years old

Contains over 500,000 stars

170,000 light years from Earth

“The cluster is a hotbed for young, massive stars”







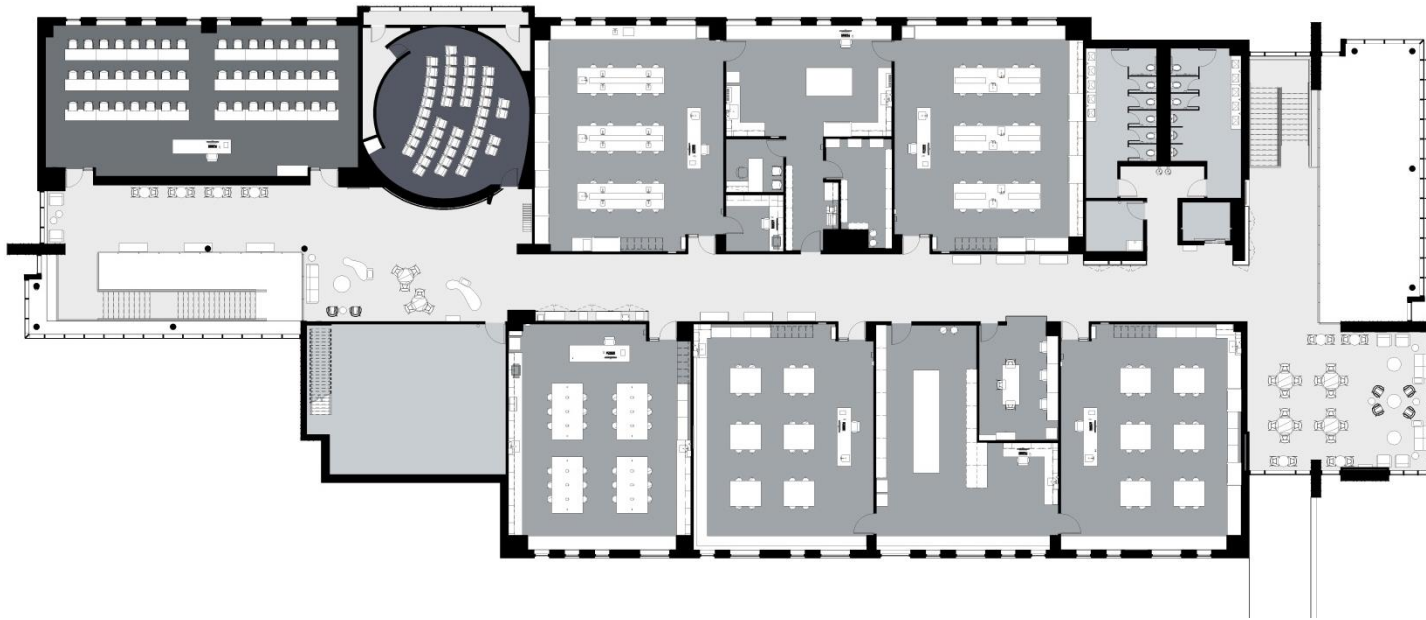


Student Collaboration Space



DEMONICA KEMPER ARCHITECTS

*Illinois Community College
Chief Financial Officers*



Level 2 Floor Plan

- (1) General Chemistry Lab
- (1) Organic Chemistry Lab
- (2) Earth Science Labs
- (1) Physics Lab
- (1) Planetarium
- (1) Weather Office
- (1) Prep / Storage Space
- (1) Lecture Classroom



Level 1 Floor Plan

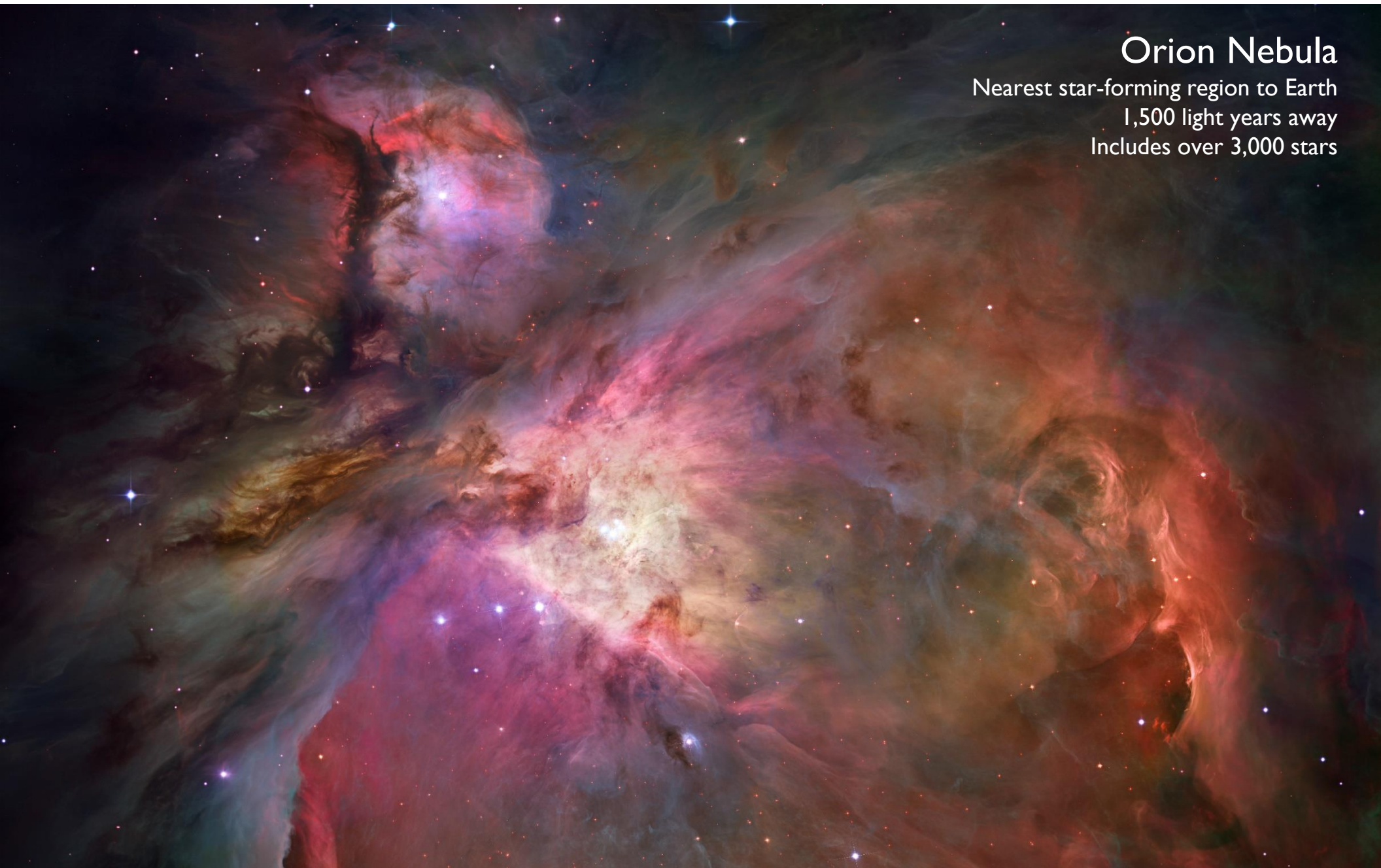
- (2) Anatomy & Physiology Labs
- (2) Biology Labs
- (1) Microbiology Lab
- (1) Cadaver Lab
- (1) Resource Lab
- (1) Prep / Storage Space
- (1) Lecture Classroom

Total Area: 40,800 SF









Orion Nebula

Nearest star-forming region to Earth

1,500 light years away

Includes over 3,000 stars



Corridor Space / Learning Opportunities

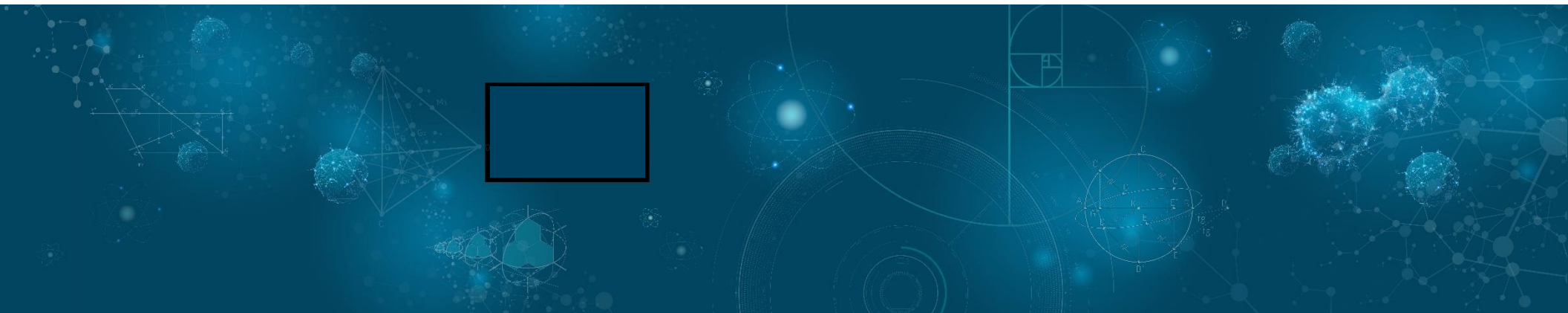


DEMONICA KEMPER ARCHITECTS

*Illinois Community College
Chief Financial Officers*



Second Floor Corridor Image



First Floor Corridor Image



















Connecting Everything
ART, HUMANITIES, AND SCIENCE
THE PORTRAIT IN PRINT COLLECTION
The Portrait in Print Collection, a permanent part of MCC's art collection, was donated to the Friends of McHenry County College by Mary and Charles Liebman. The Liebman donated this collection of over 200 fine art prints over the course of nearly 30 years, and the selected prints that comprise Connecting Everything highlight subjects in several disciplines who have direct or tangential connections to the sciences.

Study the science of art.
Study the art of science.
Develop your senses –
especially learn how to see.
Realize that everything
connects to everything else.
Lucretius De Rerum

LIEBMAN SCIENCE CENTER

The Liebman Science Center is a state-of-the-art facility that provides a modern learning environment for students and faculty. The center is designed to foster collaboration and discovery, with state-of-the-art equipment and resources. The center is a testament to the vision of the Liebman family and the dedication of the college's leadership and staff.



Connecting Everything
ART, HUMANITIES, AND SCIENCE
THE PORTRAIT IN PRINT COLLECTION

The Portrait in Print Collection, a permanent part of MCC's art collection, was donated to the Friends of McHenry County College by Mary and Charles Liebman. The Liebmans donated this collection of over 250 fine art prints over the course of nearly thirty years, and the selected prints that comprise Connecting Everything highlight subjects in varied disciplines who have direct or unexpected connections to the sciences.

Study the science of art.
Study the art of science.
Develop your senses -
especially learn how to see.
Realize that everything
connects to everything else.

LIEBMAN

Mary and Charles Liebman exemplify a central tenet of community colleges: that real, meaningful study can equip someone to not only make a living as well as to serve friends, family, and the community at large. The Liebmans spent a lifetime cultivating the gifts of knowledge, the privilege of teaching, and the honor of discovery. And now through this collection they encourage us to celebrate as well. They encourage our appreciation for the featured figures depicted in these prints and the lasting impact of their scientific, philosophical, and artistic achievements, and they encourage all who enjoy these prints to reflect on their own life journeys of curiosity.

Leonardo Da Vinci



Illinois Community College
Chief Financial Officers
October 18, 2018

THANK YOU!

Dominick Demonica, AIA, LEED AP
ddemonica@dka-design.com

Greg Spitzer, AIA, LEED AP
gspitzer@dka-design.com



DEMONICA KEMPER ARCHITECTS